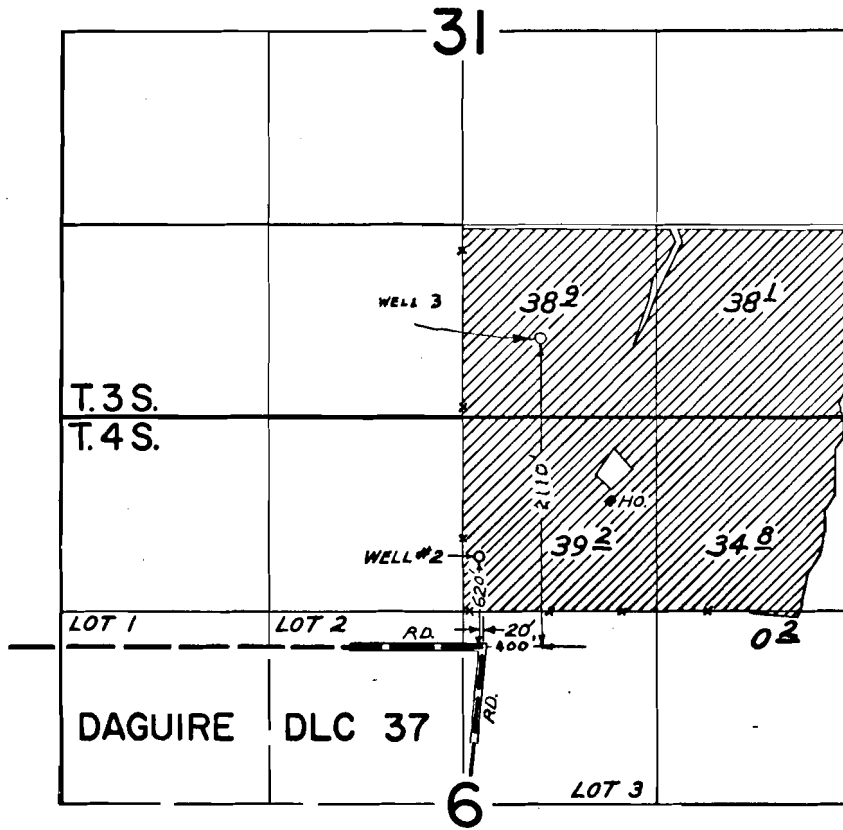


T. 3 & 4 S. R. 2 W. W. M.



NOTE: CERT. GR 3567 COVERS 15.0 ACRES IN NE 1/4 NE 1/4 & 20.0 ACRES IN NW 1/4 NE 1/4, BOTH IN SEC. 6

FINAL PROOF SURVEY
UNDER

Application No. G-3109 Permit No. G-2904
IN NAME OF

ROBERT NIEHUS

Surveyed JULY 12 1971, by GREG BACA
MAY 23 1974 L. H. NUNN