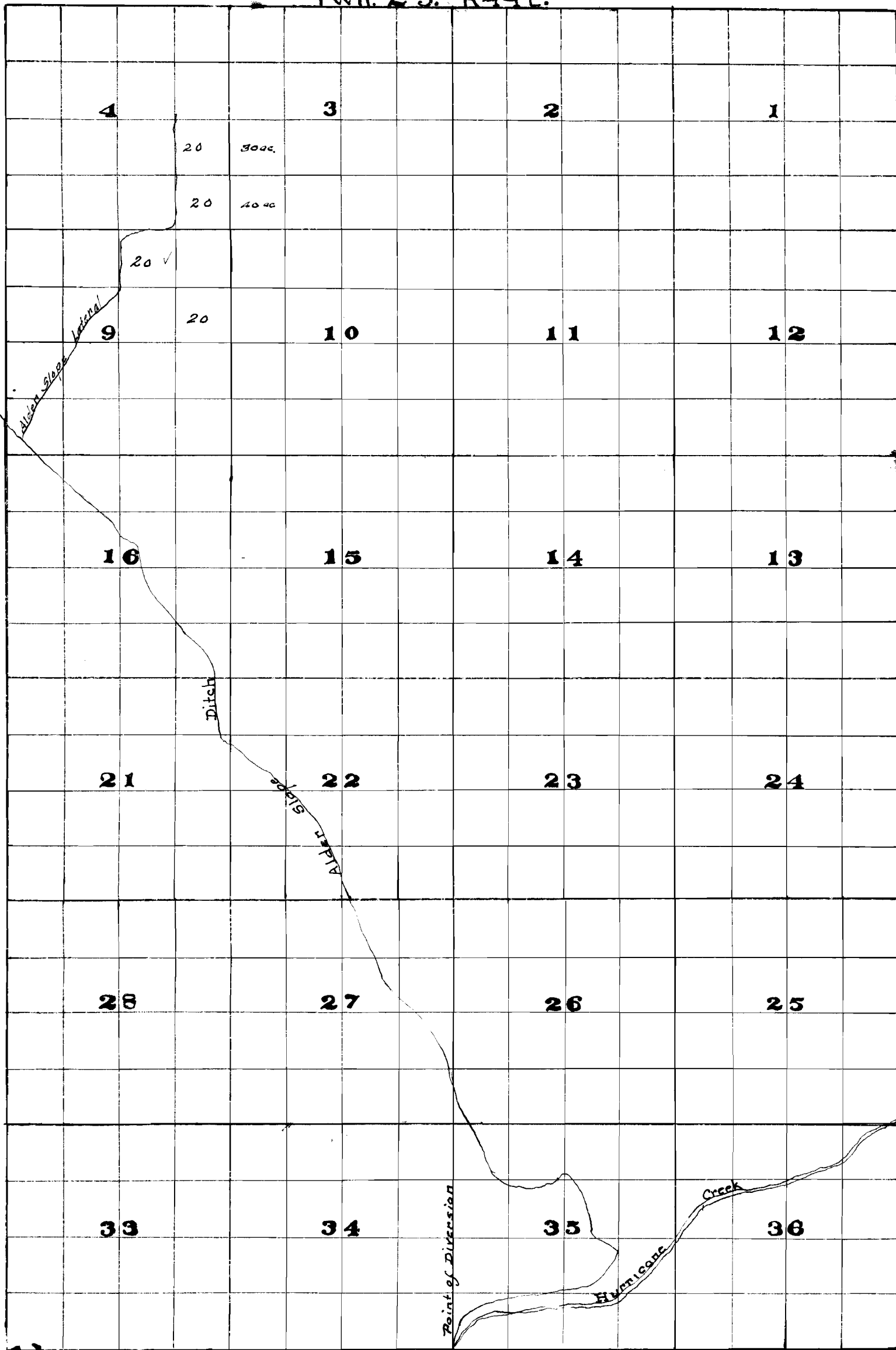


Twn. 2 S. R44E.



I, Geo. H. Brewster of Enterprise Oregon  
do hereby certify that this map was made  
from maps prepared for the Wallawa  
River Adjudication and that it cor-  
rectly shows the works shown thereon

*Geo. H. Brewster*

Adjudication No. 7571  
Permit No. 4805

*George H. Brewster*  
[Official Seal]