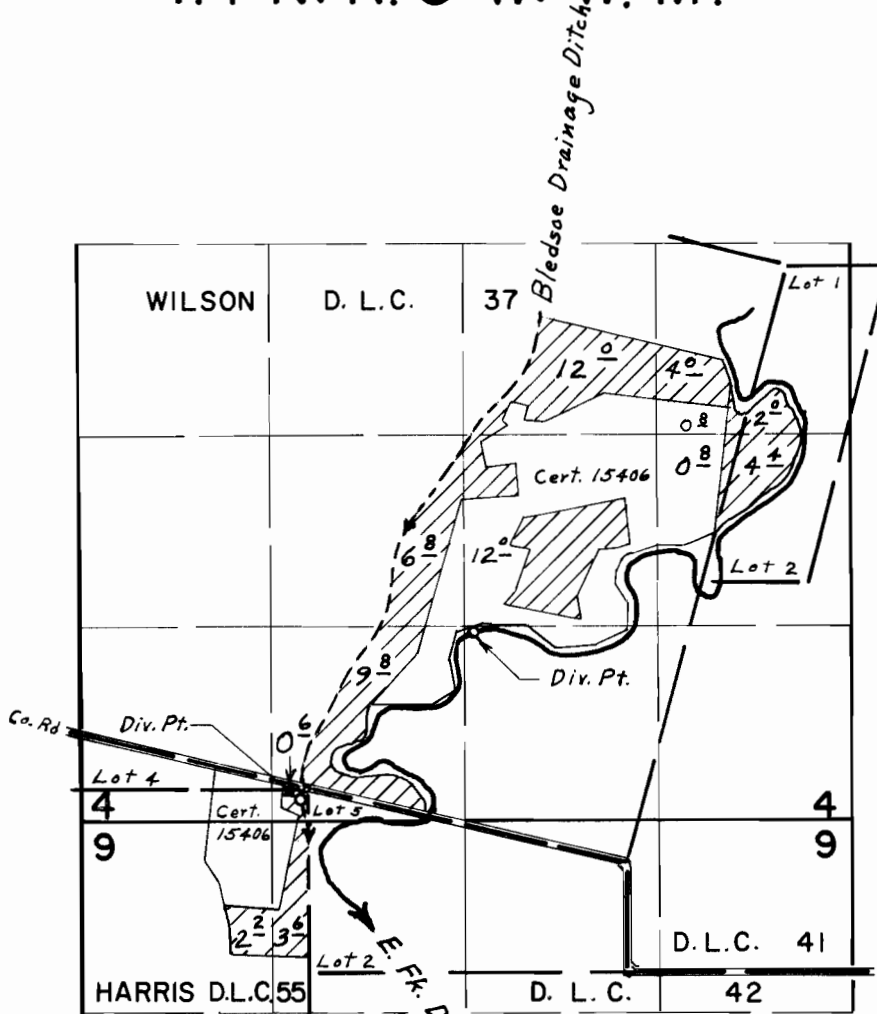


T. 1 N. R. 3 W. W. M.



Div. Pts. located: E. Fk. Dairy Cr., 1060' N. & 1150' E.;
 Bledsoe Ditch, 70' S. & 40' W. both from N.E. Cor. Harris D.L.C. 55

FINAL PROOF SURVEY UNDER

Application No. 49948 44823 Permit No. 37567 33538
 IN NAME OF

JOSEPH DUYCK

Surveyed May 26, 1971, by L. E. Gould
Aug. 7, 1975, by R. Mucken