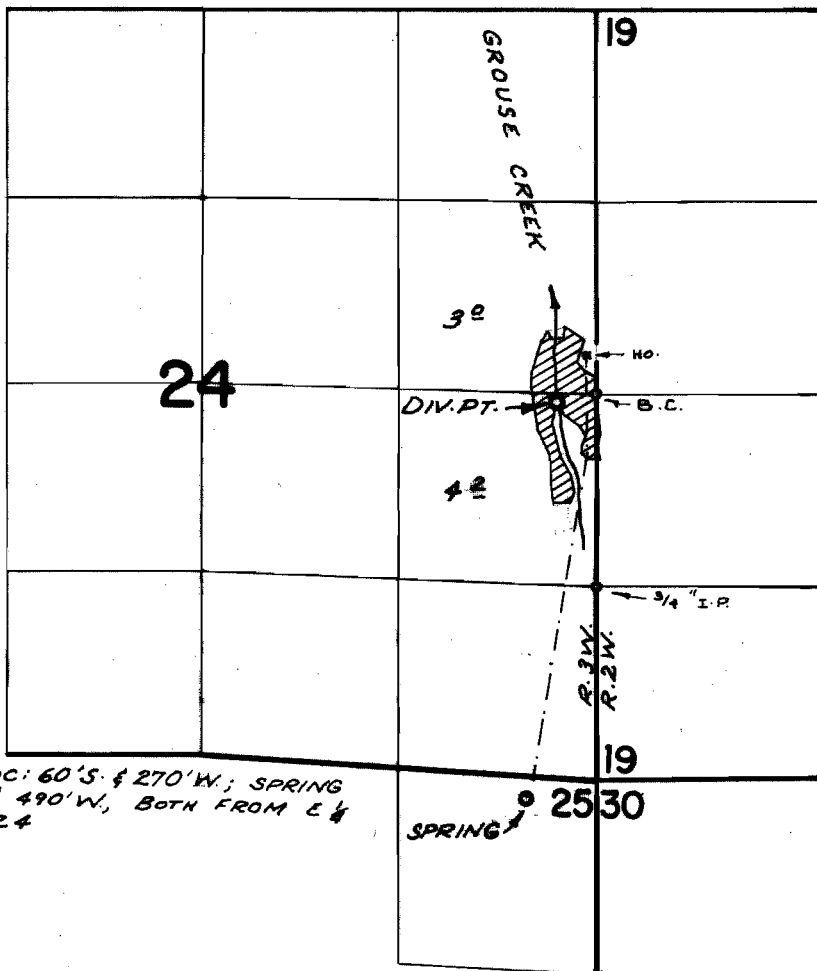


# T. 39S. R. 2 & 3 W. W.M.



DIV. PT. LOC: 60'S. & 270'W.; SPRING  
 LOC: 2780'S. & 490'W., BOTH FROM E &  
 COR. SEC. 24

SPRING 2530

## FINAL PROOF SURVEY UNDER

Application No. <sup>43290</sup>~~44819~~ Permit No. <sup>32355</sup>~~32522~~  
 IN NAME OF

ARTHUR LEE HALL

Surveyed AUG. 12, 1971, by G. BACA