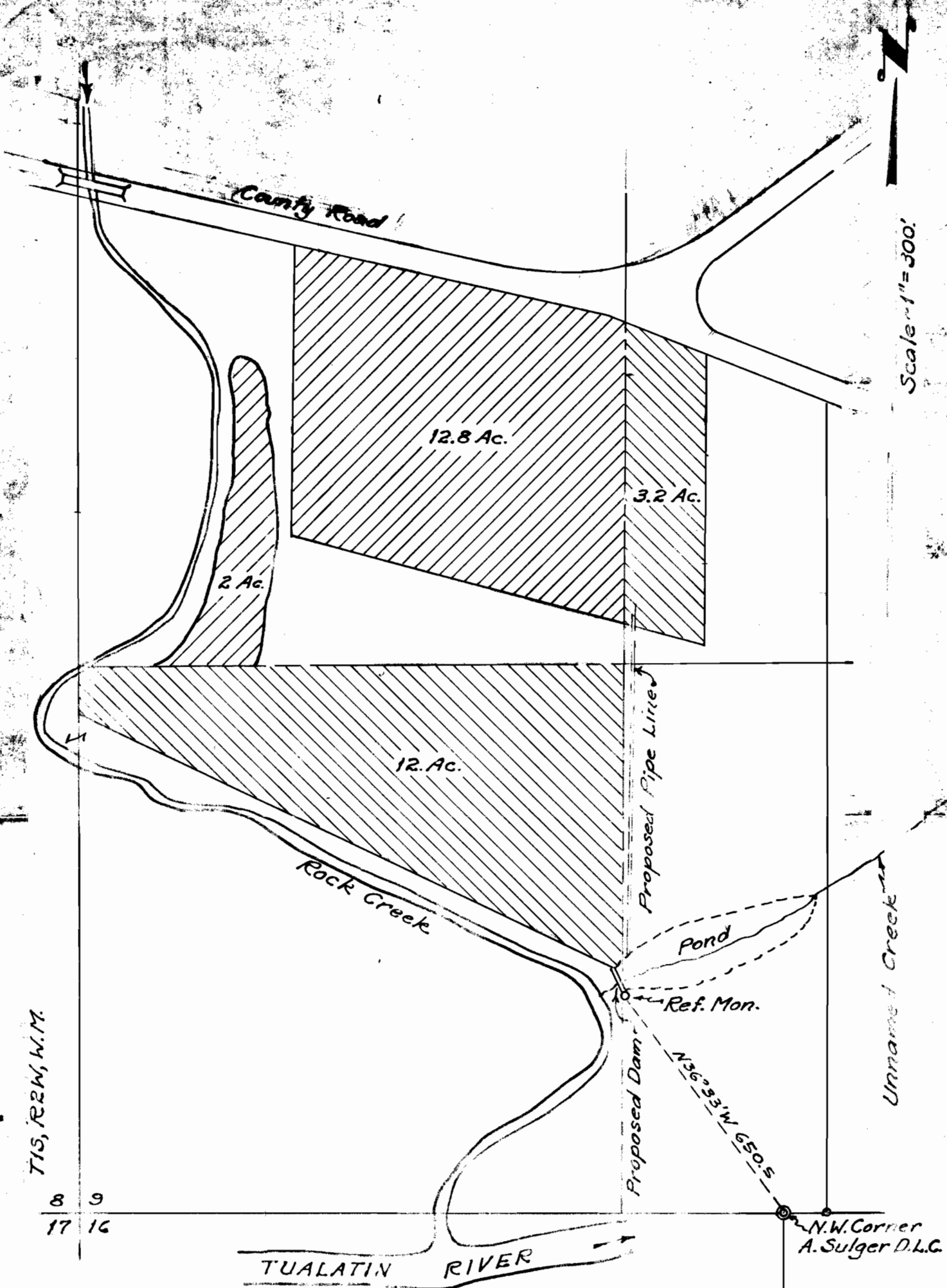


Scale "1" = 300'



I, Vernon H. Rosebraugh, Surveyor, do hereby certify that the above is a true and correct copy of the original record of this survey, and that the same was driven by me or under my supervision on the 11th day of May, 1915, at 10 o'clock P.M. at the N.W. Corner of the A. Sulger D.L.C. No. 118, T. 15, R. 2W, W. M.

Vernon H. Rosebraugh

Surveyor

10-23261
 12500
 10-956