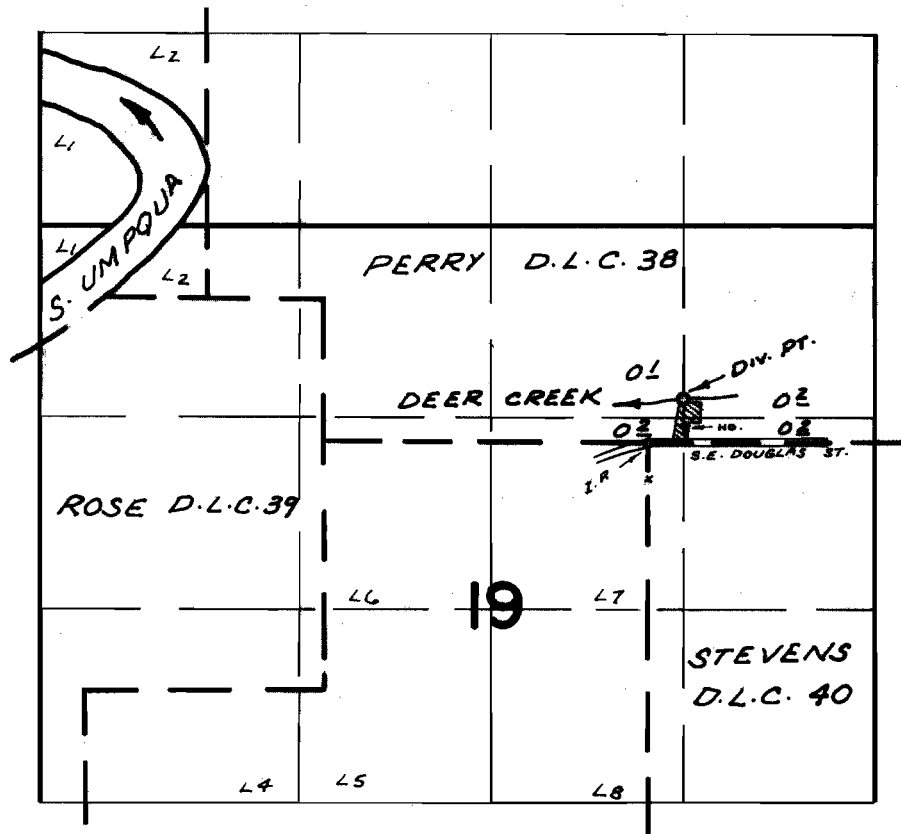


T.27S.R.5W.W.M.



DIV. PT. LOC: 300' N. & 230' E. FROM N.W. COR. D. L. C. 40

FINAL PROOF SURVEY UNDER

Application No. 47095 Permit No. 35236
IN NAME OF

O. EARL BYRD

Surveyed MAY 1 1972, by R. MUCKEN