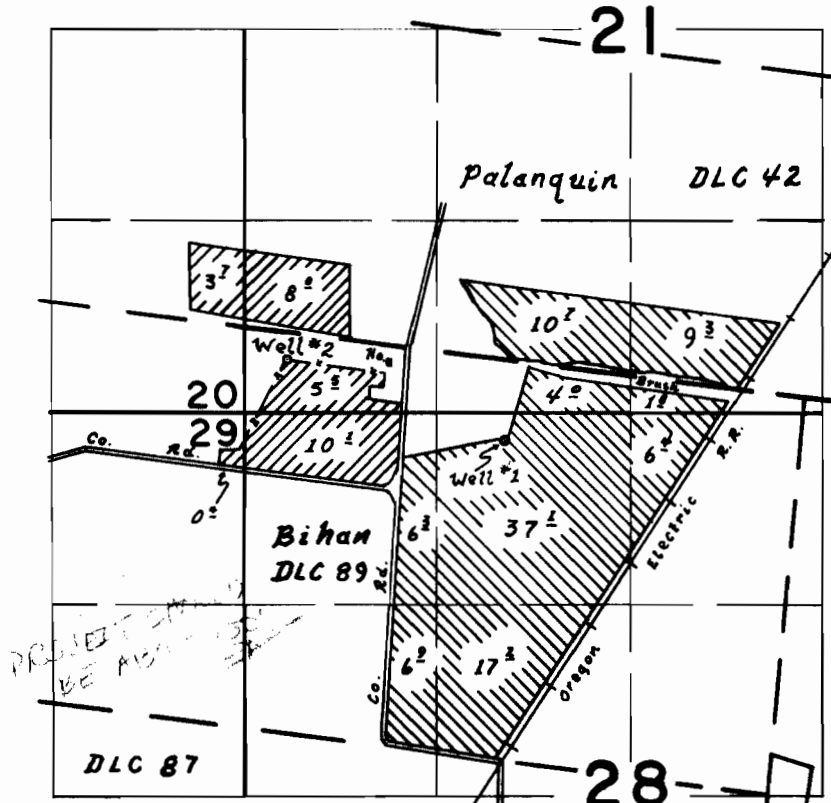


# T. 5 S. R. 2 W. W.M.



Well #1 loc. 300' S. & 2060' W. from N.E. cor. Bihan DLC 89  
 Well #2 loc. 260' N. & 3540' W. from N.E. cor. Bihan DLC 89

-  From Well # 1
-  From Well # 2

## FINAL PROOF SURVEY UNDER

Application No. G-3921 Permit No. G-3682  
 IN NAME OF

*Carl F. Werner*

Surveyed 13 OCT 1972 by D. O'Reilly