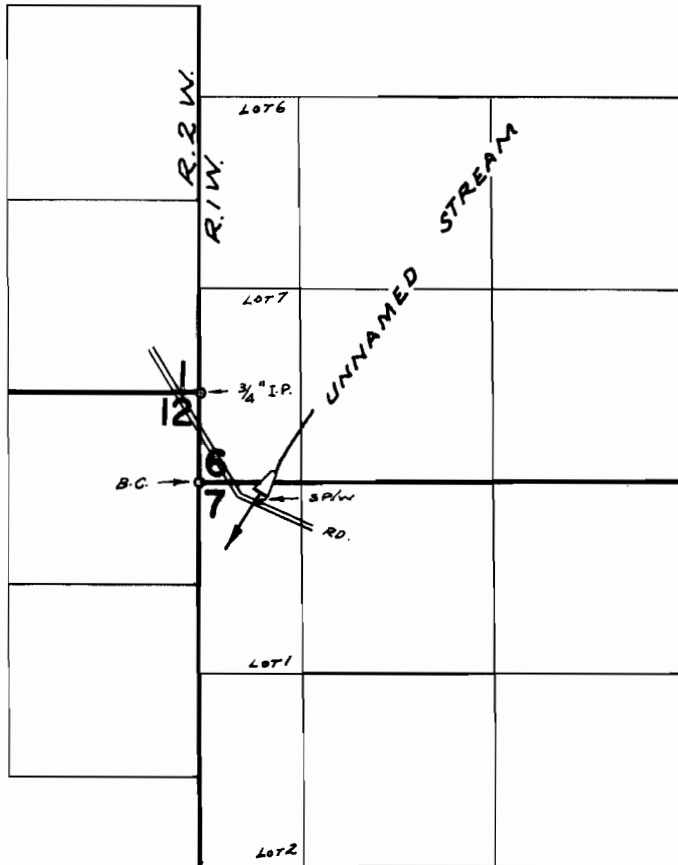


# T.27S.R.1&2W.W.M.



DIV. PT. Loc: 70'S. & 430'E. FROM N.W. COR. SEC. 7

## FINAL PROOF SURVEY UNDER

Application No. <sup>40016</sup> ~~R-40420~~ Permit No. <sup>29897</sup> ~~R-4483~~  
IN NAME OF

U. S. DEPARTMENT OF AGRICULTURE

Surveyed MAY 4, 1972, by R. MUCKEN