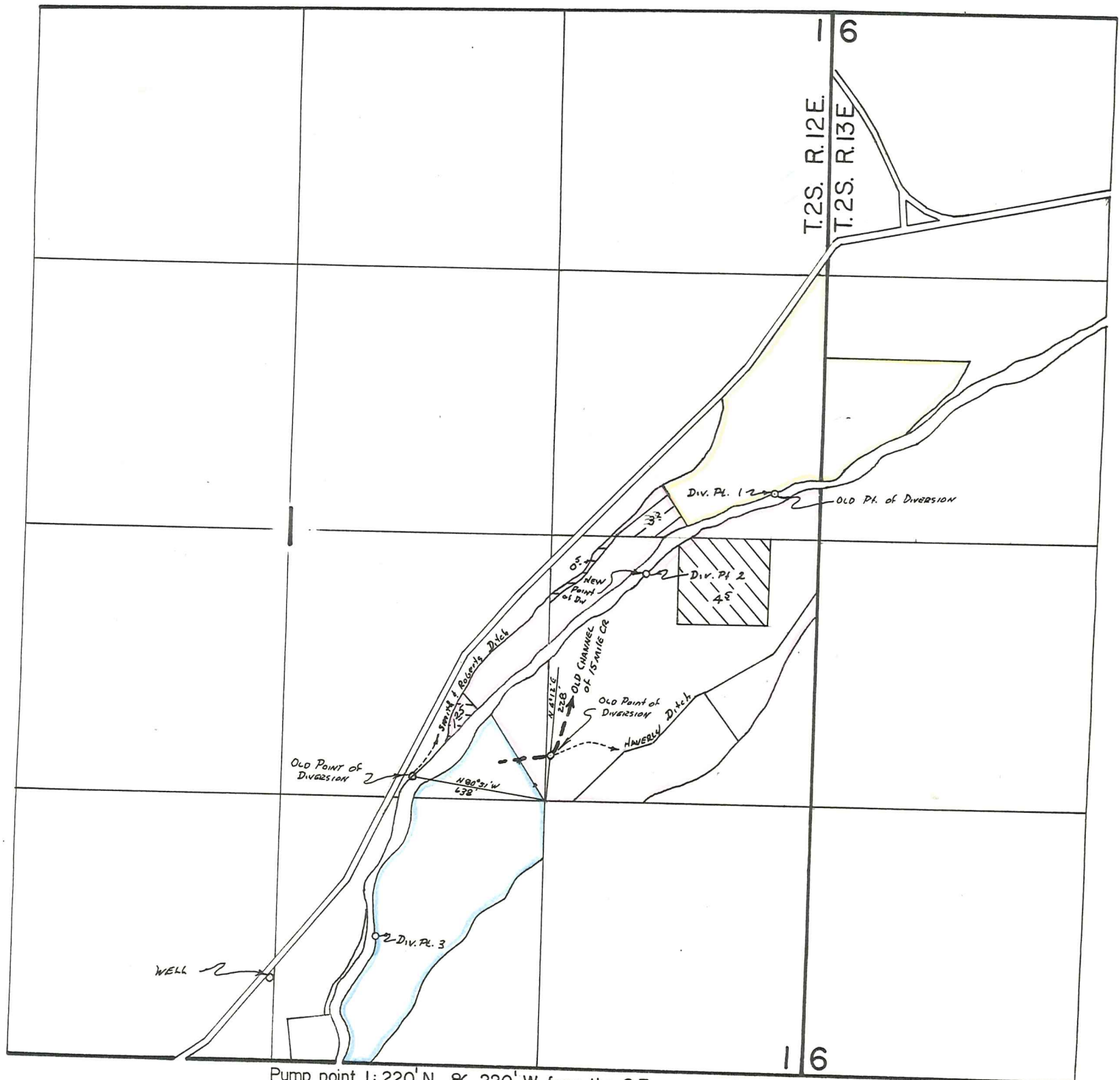


RECEIVED

MAR 6 7 1978

WATER RESOURCES DEPT.
SALEM, OREGON

T.2S. R.12 & 13E. W.M.



Pump point 1: 220' N. & 220' W. from the S.E. corner of the SE.NE of Section 1
 Pump point 2: 180' S. & 860' W. from the S.E. corner of the SE.NE of Section 1
 Pump point 3: 630' N. & 500' E. from the S/4 corner of Section 1
 Well located: 420' N. & 20' W. from the S/4 corner of Section 1

Application Map For

PRESTON & LILLIAN LINDHORST

Scale: 8" = 1 mile

Change in point of diversion
for Cert. 40410, 20238, &
6806

THIS MAP PREPARED BY:

T. [Signature]
 FROM INFORMATION FURNISHED BY
 THE APPLICANT.