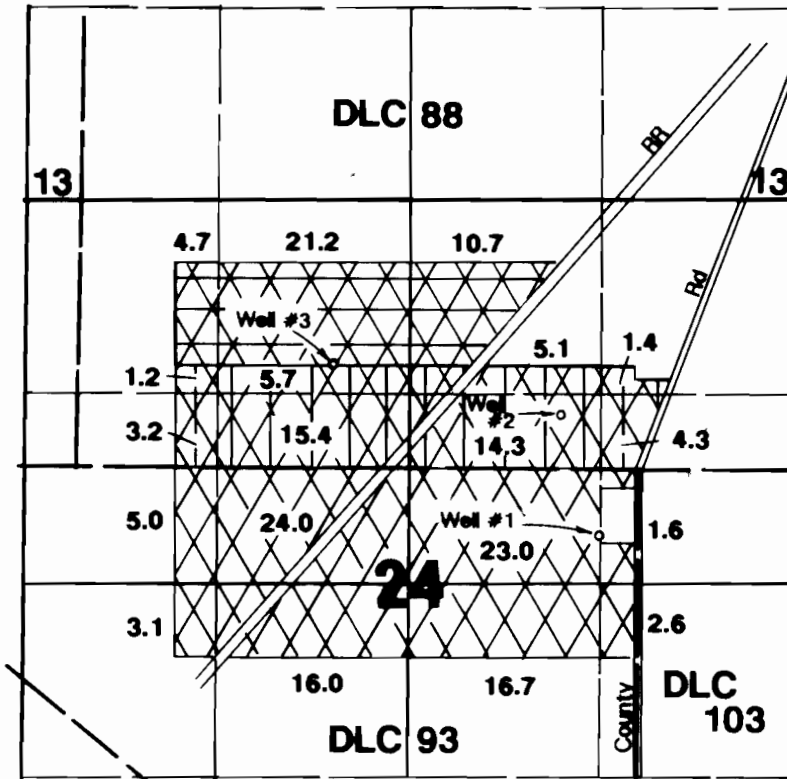


RECORDED

JUL 5 1990

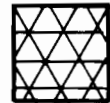
WATER RIGHTS DEPARTMENT
S.W. 1000

T.5S., R.2W., W.M.

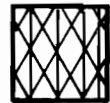


1" = 1320'

Wells 1, 2 & 3
Area Irrigated



G-11630



G-3974



G-12113

Well #1 located 2297'S & 1320'W from NE corner Section 24.

Well #2 located 360'N & 540'W from NE corner DLC 93.

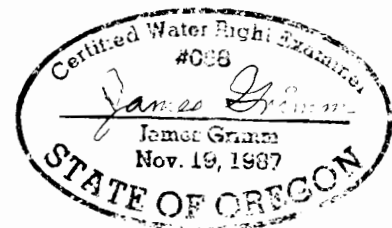
Well #3 located 1150'S & 2120'E from NW corner Section 24.

710'N & 1750'E SW ^ DLC 88

(8/14/90 JKG)

Final Proof Survey

Application #G-11630 Permit#G-10750
 G-12113 G-11123
 G-3974 G-3731
 In Name Of



Norman A. Reiling

Surveyed on August 15, 1990 by J. Grimm