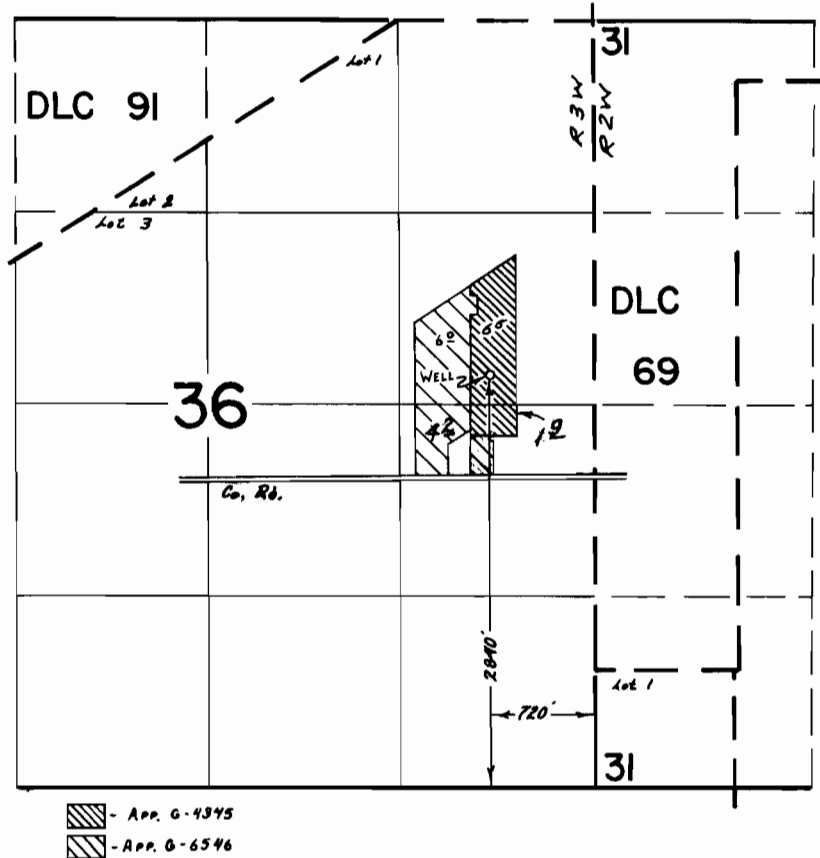


T.5S. R.28&3W. W.M.



**FINAL PROOF SURVEY**  
UNDER

Application No. G-4345 Permit No. G-4102  
IN NAME OF

**KENNETH LANDERS**

Surveyed Oct. 29 19 73, by R. B. MUCKEN  
July 8 19 80, by C. L. Hughes

REVISED GWS  
2/2/88  
DFN-6LL-110 TP