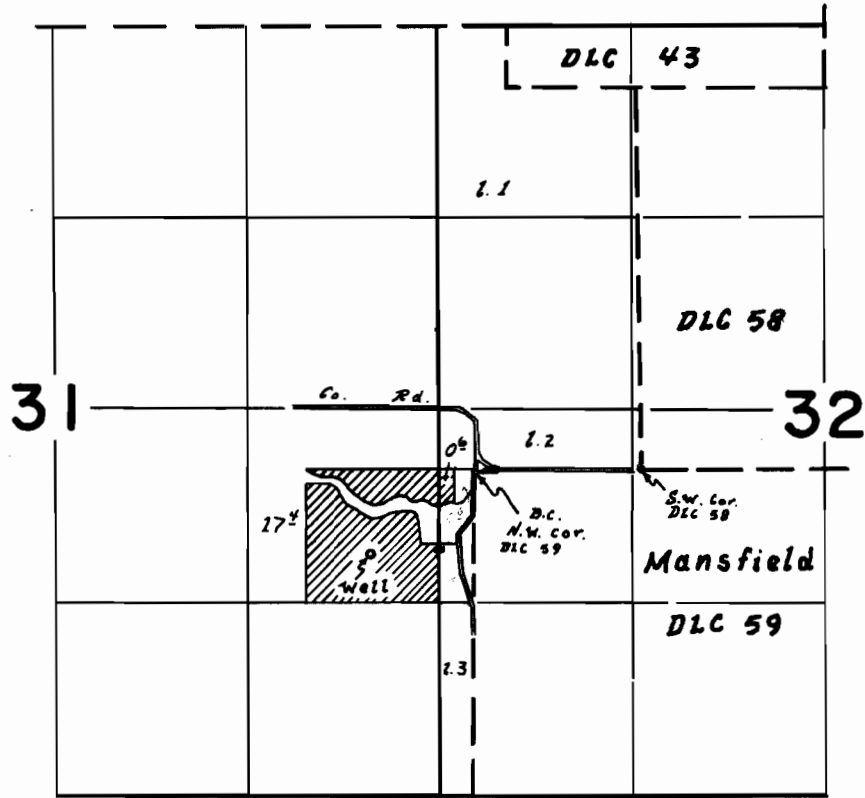


T. 16S. R. 3W. W.M.



Well loc. 560'S. & 720'W. from NW Cor. Mansfield DLC 59

**FINAL PROOF SURVEY**  
UNDER

Application No. G-4719 Permit No. G-4442  
IN NAME OF

George N. Chambers

Surveyed 5 July, 1972, by L.E. Gould