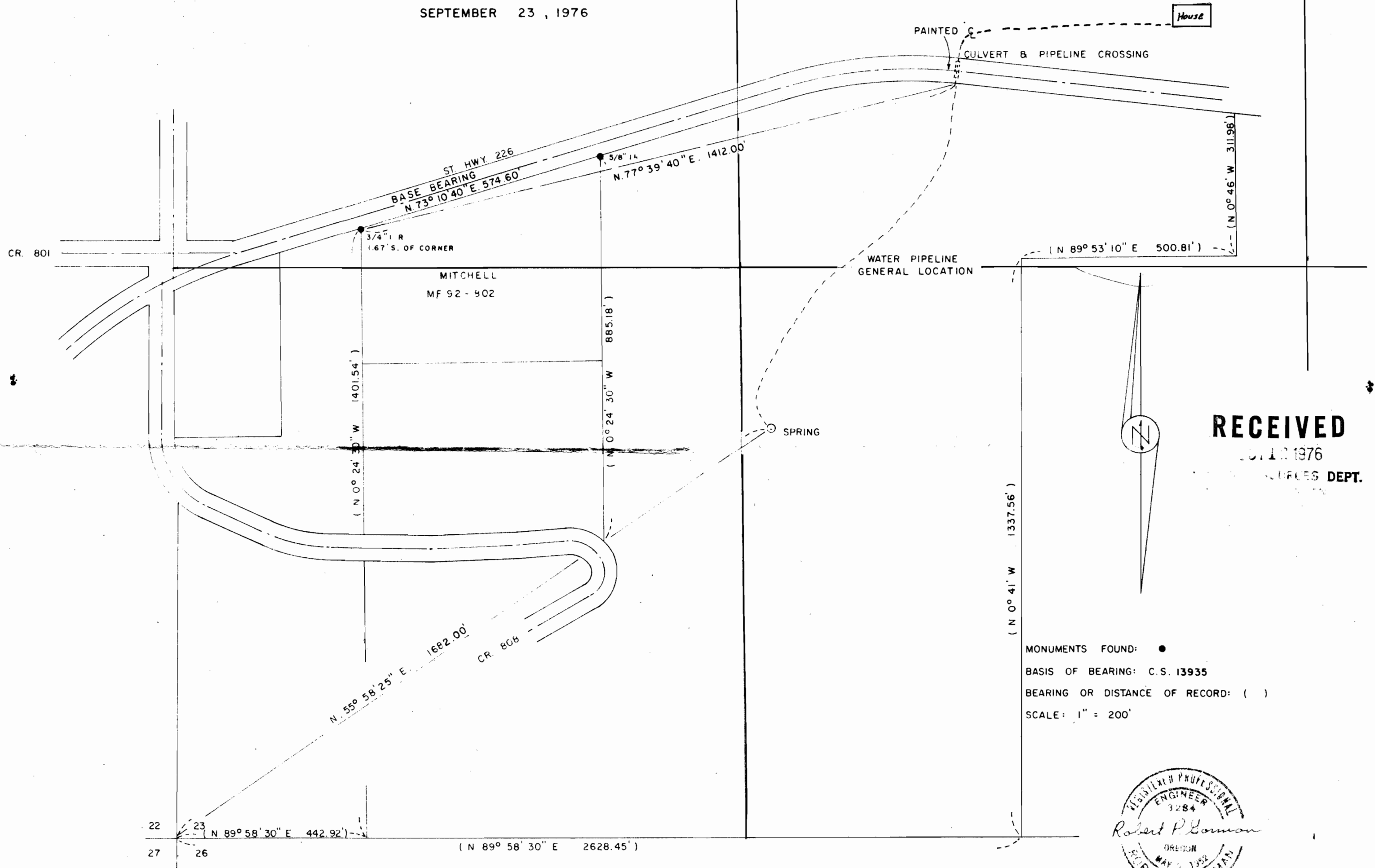


MAP FOR GEORGE VANAGTMAEL
 IN SW 1/4, SEC. 23, T.9 S., R.1 E., W.M.
 LINN COUNTY, OREGON
 SEPTEMBER 23, 1976

Application No. 54876
 Permit No. 41161



RECEIVED
 OCT 12 1976
 SURVEYS DEPT.

MONUMENTS FOUND: ●
 BASIS OF BEARING: C.S. 13935
 BEARING OR DISTANCE OF RECORD: ()
 SCALE: 1" = 200'



ROBERT P. GORMAN C. E.
 PO. BOX 97, STAYTON, ORE.
 C.J.J.