

T.3N. R.28E. W.M.

6-5500

76727

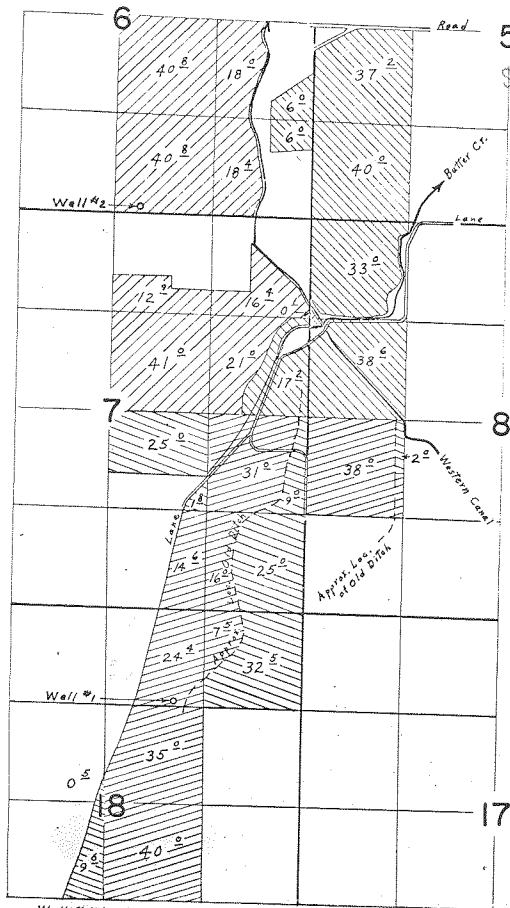
41252

SUPERSEDED BY

Cont. 76726

W113111

V.55 P.36



Well #1 located 1220' S. & 1760' W. from N.E. Corner Section 18  
 Well #2 located 80' N. & 350' E. from S. & Corner Section 6

- Well #1 Primary
- Well #1 Supplemental
- Well #2 Primary
- Well #2 Supplemental



Surveyed April 17, 1923, by L. E. Gould

STONE MACHINERY CO.

IN NAME OF

Application No. 5-3939 Permit No. G-3530

UNDER

FINAL PROOF SURVEY

Well #1 located 1220' S. & 1760' W. from N.E. Corner Section 18  
Well #2 located 80' N. & 350' E. from S. & corner Section 6

Well #1 Primary  
Well #1 Supplemental  
Well #2 Primary  
Well #2 Supplemental

Legend:  
[Diagonal lines /] Well #1 Primary  
[Diagonal lines \] Well #1 Supplemental  
[Diagonal lines /] Well #2 Primary  
[Diagonal lines \] Well #2 Supplemental

