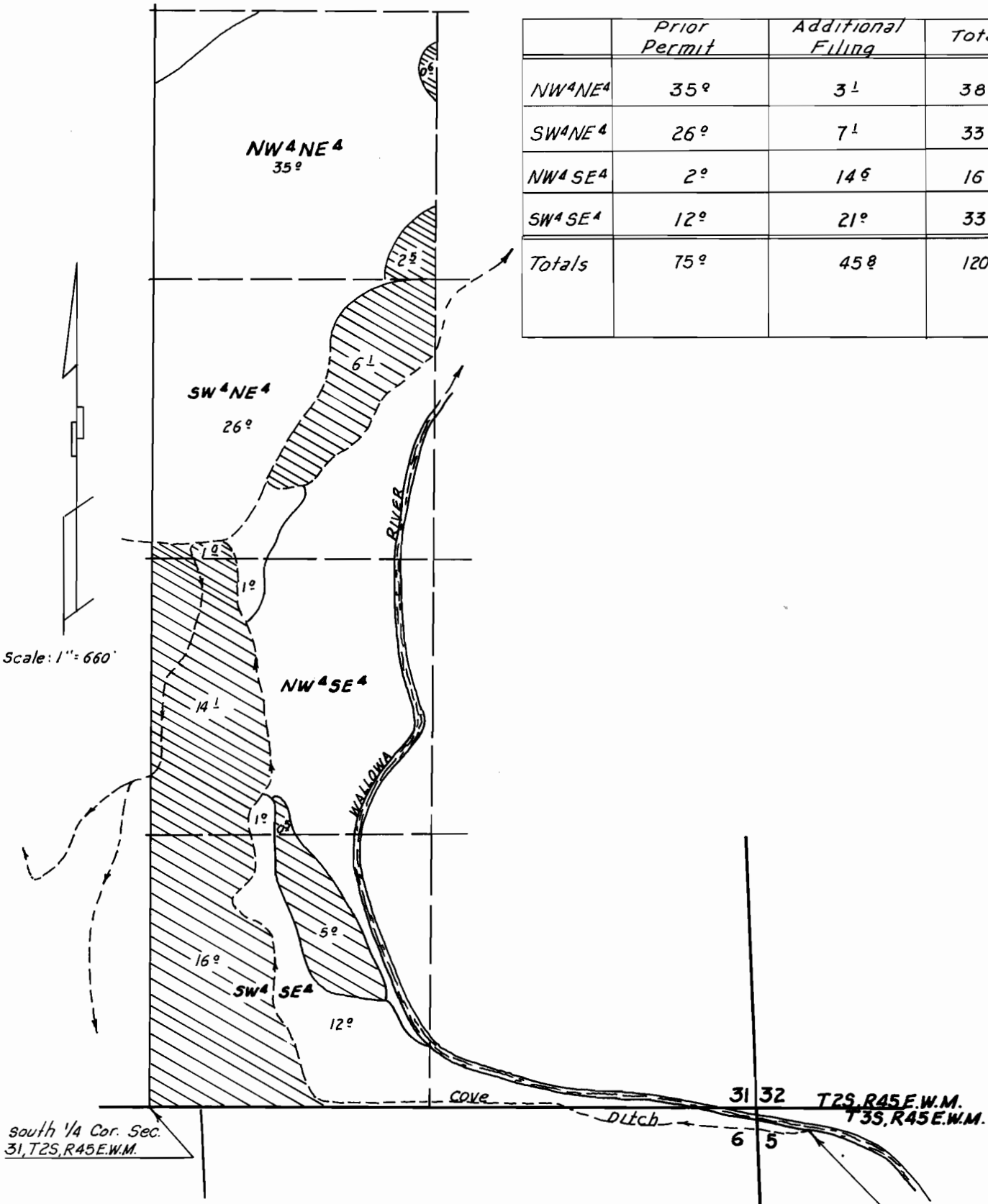


	Prior Permit	Additional Filing	Total
NW <sup>4</sup> NE <sup>4</sup>	35°	3 <sup>1</sup>	38 <sup>1</sup>
SW <sup>4</sup> NE <sup>4</sup>	26°	7 <sup>1</sup>	33 <sup>1</sup>
NW <sup>4</sup> SE <sup>4</sup>	2°	14 <sup>6</sup>	16 <sup>6</sup>
SW <sup>4</sup> SE <sup>4</sup>	12°	21°	33°
Totals	75°	45 <sup>8</sup>	120 <sup>8</sup>



Scale: 1" = 660'

South 1/4 Cor. Sec. 31, T2S, R45E.W.M.

Point of Diversion bears S68°30'E, 261 feet from the NW Cor. of Sec. 5, T3S, R45E.W.M.

Surveyed and plotted for Kirk Hayes  
 Date: Oct. 22, 1966  
 By: Verne H. Russell - Reg. Prof. Land Surveyor - Ore. No 427

REGISTERED  
 OREGON  
 LAND SURVEYOR

*Verne H. Russell*

43142  
 30008