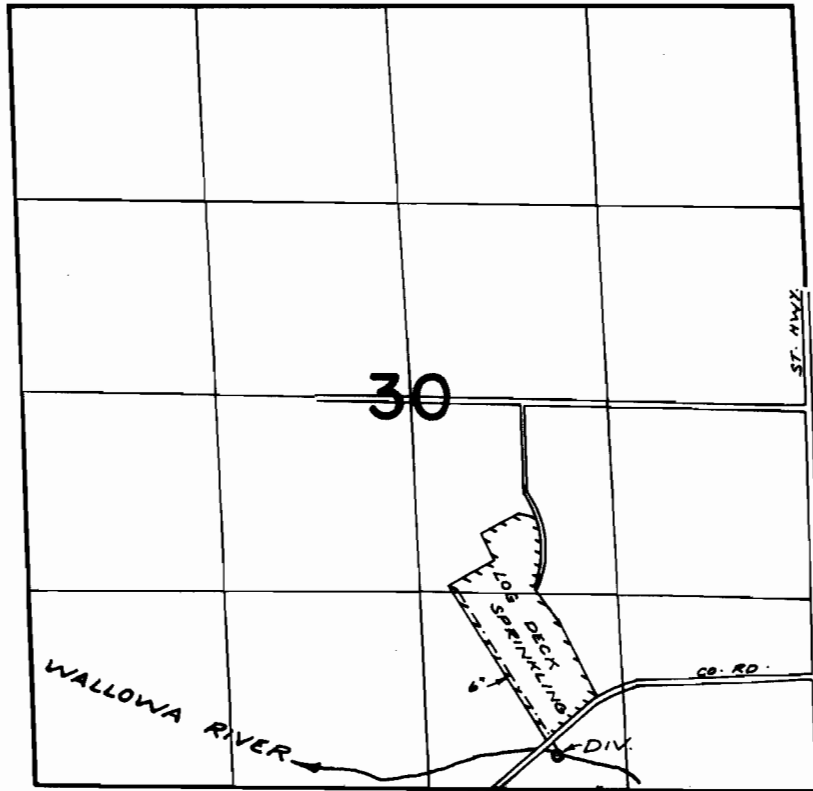


T.2S.R.45E.W.M.



DIV. PT. LOC: 270' N. & 460' W. FROM S.E. COR. S.W. 1/4 SE 1/4 SEC. 30

**FINAL PROOF SURVEY
UNDER**

Application No. 45907 Permit No. 34295
IN NAME OF

BOISE CASCADE CORPORATION

Surveyed JULY 3, 1973, by R. MUCKEN