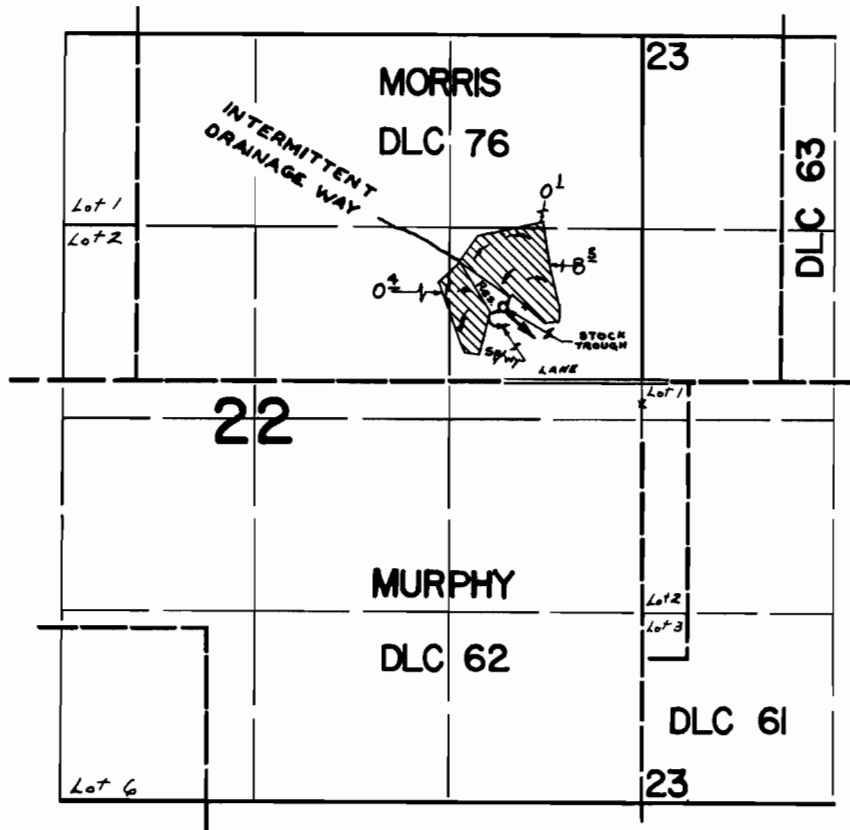


# T.8S. R.5W. W.M.



Div. Pt. Loc: 500' N. & 950' W. From N.E. cor. Murphy DLC 62

## FINAL PROOF SURVEY UNDER

Application No. 45092 R-45091 Permit No. 33699 R-5325

IN NAME OF

KENNETH McCRAE

Surveyed APRIL 5, 1973, by R. MUCKEN