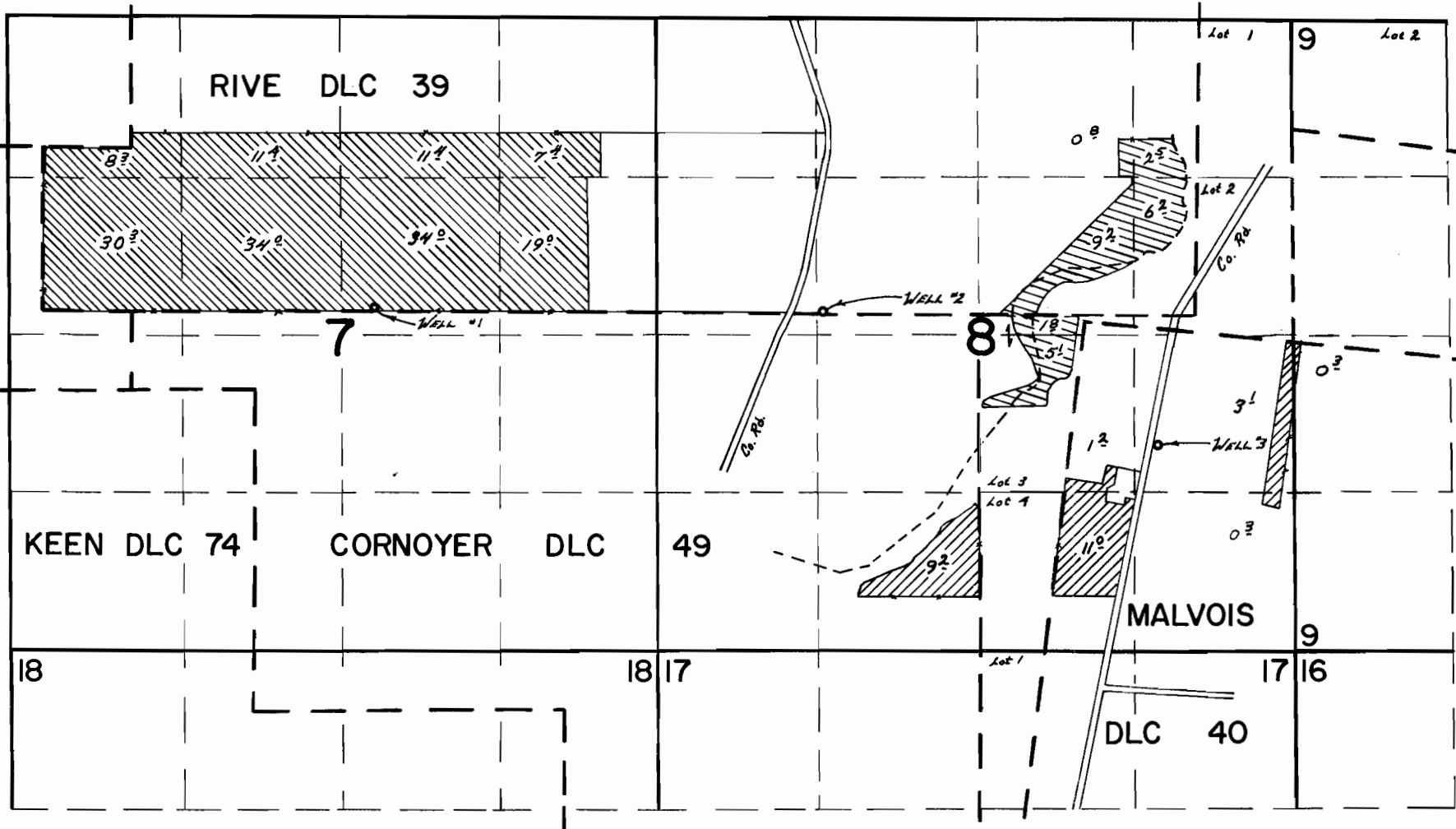


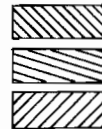
# T.5S. R.2W. W.M.



WELL #1 Loc.: 100' N & 5040' W From NE Cor Cornoyer DLC 49

WELL #2 Loc.: 30' N & 1290' W From NE Cor Cornoyer DLC 49

WELL #3 Loc.: 1100' S & 1500' E From NE Cor Cornoyer DLC 49



## FINAL PROOF SURVEY

DLC 49

Application No. G-4005 and G-3757

IN FAVOR OF

**COLEMAN RANCH, INC.**

Surveyed May 22, 1979, by TJ Paul