

WILDWOOD

A SUBDIVISION IN SECTIONS 16 AND 21, T.26 S., R.5 W., W.M. DOUGLAS COUNTY, OREGON R.H.GEE REG. PROF. ENGINEER SCALE 1" = 200'

VOL. 13, PAGE 26

DEDICATION

KNOW ALL MEN BY THESE PRESENTS THAT WE, GEORGE W. CAPE AND JUNE CAPE, HUSBAND AND WIFE, OWNERS, AND HALL SEELY AND HELEN SEELY, HUSBAND AND WIFE, CONTRACT PURCHASERS, OF THE LANDS REPRESENTED AND DESCRIBED ON THE ANNEXED PLAT, HAVE CAUSED THE SAME TO BE SURVEYED AND PLATTED BY THE NAME OF "WILDWOOD", AND WE HEREBY DEDICATE TO THE USE OF THE PUBLIC FOREVER, THE ROADS AND WALKWAYS SHOWN THEREON.

George W. Cape, June Cape, Hall Seely, Helen Seely

APPROVALS

BY ORDER OF THE DOUGLAS COUNTY BOARD OF COMMISSIONERS APPROVED July 22, 1968 Ralph Sandstedt Chairman, Ray E. Danner Commissioner, Stanford Bauer Commissioner

BY ORDER OF DOUGLAS COUNTY PLANNING COMMISSION APPROVED 23 May, 1968 L.V. Beckley Chairman, Donald N. Davis Secretary

APPROVED 9 July, 1968 James D. Bryan County Surveyor, James Gray M.D. County Health Officer

APPROVED July 11, 1968 Alaud W. Hammond Jr. County Assessor

CERTIFICATE OF SURVEYOR

STATE OF OREGON ) S.S. COUNTY OF DOUGLAS ) I, R.H.GEE, BEING FIRST DULY SWORN, DEPOSE AND SAY THAT I HAVE CORRECTLY SURVEYED AND MARKED WITH PROPER MONUMENTS THE LAND SHOWN ON THE ANNEXED PLAT OF WHICH THE FOLLOWING IS A TRUE AND CORRECT DESCRIPTION: BEGINNING AT THE INITIAL POINT, A 2" GALV. IRON PIPE ON NORTH BANK OF THE NORTH UMPQUA RIVER FROM WHICH THE SECTION CORNER TO SECTIONS 15, 16, 21 AND 22, T.26 S., R.5 W., W.M. BEARS NORTH 144.478'; THENCE N20°01'27"W 1147.28'; THENCE S17°29'52"W 600.56'; THENCE ALONG THE ARC OF A 180' RADIUS CURVE HAVING A CHORD OF N85°24'00"W 96.20'; THENCE S79°06'04"W 143.36'; THENCE ALONG THE ARC OF A 120' RADIUS CURVE HAVING A LONG CHORD OF N64°54'13"W 141.05'; THENCE N28°54'31"W 176.38'; THENCE ALONG THE ARC OF A 320' RADIUS CURVE HAVING A LONG CHORD OF N55°48'26"W 289.54'; THENCE N82°42'21"W 298.09'; THENCE ALONG THE ARC OF A 145' RADIUS CURVE HAVING A LONG CHORD OF N51°12'44"W 151.50'; THENCE N19°43'06"W 182.48'; THENCE ALONG THE ARC OF A 180' RADIUS CURVE HAVING A LONG CHORD OF N52°52'09"W 246.21'; THENCE S73°58'49"W 60.94'; THENCE ALONG THE ARC OF A 492.70' RADIUS CURVE HAVING A LONG CHORD OF N73°23'56"W 140.35'; THENCE N40°46'41"W 174.54'; THENCE ALONG THE ARC OF A 372.51' RADIUS CURVE HAVING A LONG CHORD OF N31°05'21"W 158.55'; THENCE ALONG THE ARC OF A 85.32' RADIUS CURVE HAVING A LONG CHORD OF N2°27'11"W 111.78'; THENCE N51°31'46"W 60.00'; THENCE S38°28'14"W 37.25'; THENCE ALONG THE ARC OF A 82.59' RADIUS CURVE HAVING A LONG CHORD OF S87°45'16"W 125.20'; THENCE N42°57'41"W 196.25'; THENCE ALONG THE ARC OF A 1367.88' RADIUS CURVE HAVING A LONG CHORD OF N47°23'44"W 211.51'; THENCE ALONG THE ARC OF A 2221.72' RADIUS CURVE HAVING A LONG CHORD OF N49°11'08"W 205.01'; THENCE N46°32'28"W 98.84'; THENCE ALONG THE ARC OF A 439.26' RADIUS CURVE HAVING A LONG CHORD OF N57°14'42"W 163.17'; THENCE N67°56'56"W 86.26'; THENCE S47°57'27"W 250.99' TO THE NORTH BANK OF THE NORTH UMPQUA RIVER; THENCE ALONG THE NORTH BANK OF THE NORTH UMPQUA RIVER THE FOLLOWING COURSES AND DISTANCES: S81°50'43"E 30.05'; S45°50'46"E 359.90'; S40°26'51"E 494.20'; S35°09'46"E 101.93'; S52°41'04"E 112.94'; S36°58'19"E 168.76'; S38°55'19"E 332.73'; S39°47'01"E 700.70'; S49°00'16"E 251.54'; S43°33'41"E 243.92'; S57°35'06"E 158.55'; S65°41'51"E 238.69'; S70°23'56"E 519.72'; S59°40'21"E 215.11'; S78°31'11"E 161.78'; N66°59'53"E 256.06'; N57°08'12"E 319.68' TO THE PLACE OF BEGINNING, CONTAINING 53.83 ACRES IN SECTIONS 16 AND 21, T.26 S., R.5 W., W.M.

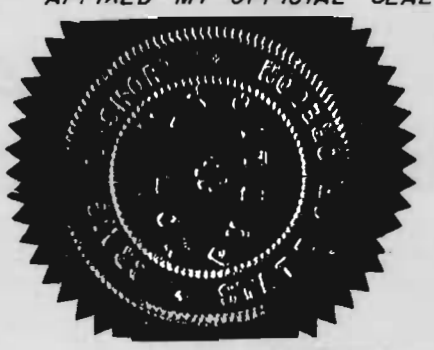


R.H. GEE, REG. PROF. ENGINEER

SUBSCRIBED AND SWORN TO BEFORE ME THIS 22nd DAY OF MAY 1968

G.D. Myllesbeck COUNTY CLERK

STATE OF OREGON ) S.S. COUNTY OF DOUGLAS ) ON THIS 12th DAY OF MAY, 1968, BEFORE ME APPEARED GEORGE W. CAPE AND JUNE CAPE, TO ME PERSONALLY KNOWN, WHO BEING DULY SWORN, DID SAY THAT THEY ARE THE OWNERS OF THE TRACT OF LAND DELINEATED ON THE ANNEXED PLAT, AND THAT THEY DO HEREBY ACKNOWLEDGE THAT THEY SIGNED THE ACCOMPANYING DEDICATION AS THEIR FREE AND VOLUNTARY ACT AND DEED.



Craig J. Frost NOTARY PUBLIC OF OREGON MY COMMISSION EXPIRES 4-6-3, 1968

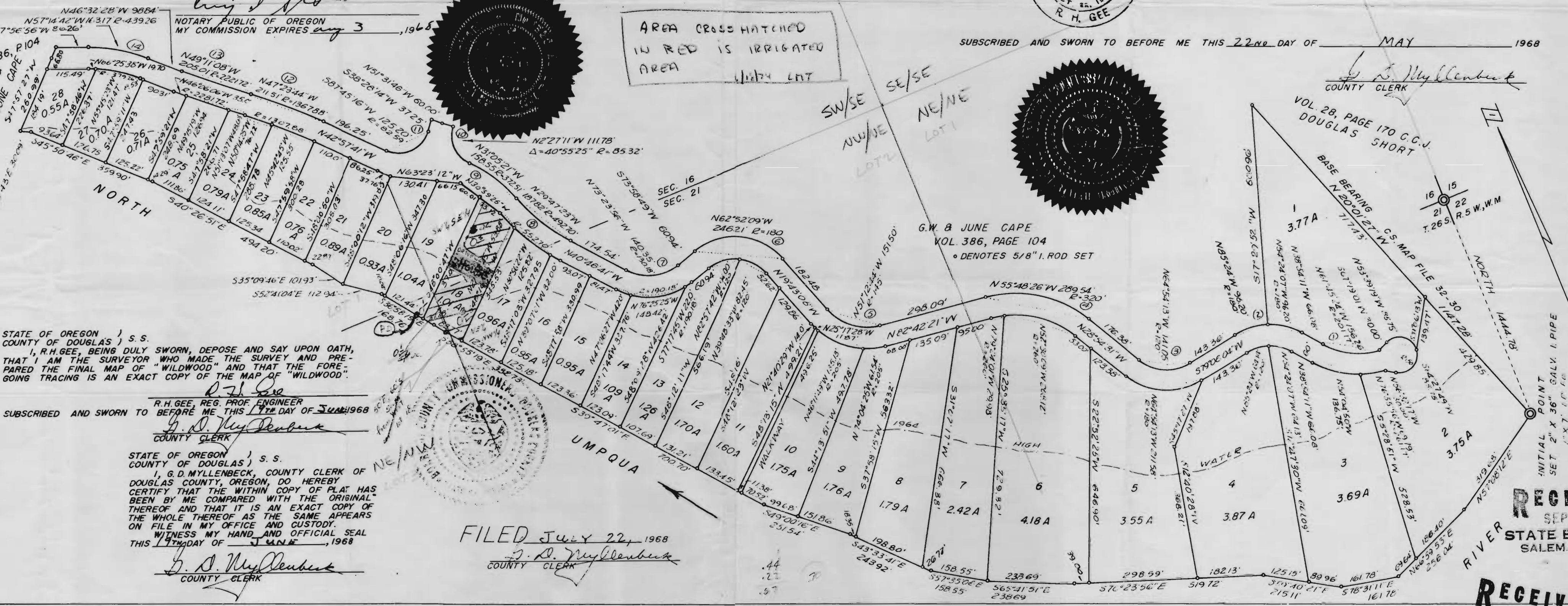
STATE OF OREGON ) S.S. COUNTY OF DOUGLAS ) ON THIS 21st DAY OF MAY, 1968, BEFORE ME APPEARED HALL SEELY AND HELEN SEELY, TO ME PERSONALLY KNOWN, WHO BEING DULY SWORN, DID SAY THAT THEY ARE THE CONTRACT PURCHASERS OF THE TRACT OF LAND DELINEATED ON THE ANNEXED PLAT, AND THAT THEY DO HEREBY ACKNOWLEDGE THAT THEY SIGNED THE ACCOMPANYING DEDICATION AS THEIR FREE AND VOLUNTARY ACT AND DEED.



Craig J. Frost NOTARY PUBLIC OF OREGON MY COMMISSION EXPIRES May 3, 1968

Table with 14 columns: CURVE No, Δ ANGLE, RADIUS, LENGTH, LONG CHORD, L.C. BEARING. It lists curve data for 14 different curves.

AREA CROSS HATCHED IN RED IS IRRIGATED AREA 11/274 ACR



VOL. 13, PAGE 26

Application No. 49568 Permit No. 37098

RECEIVED AUG 9 1972 STATE ENGINEER SALEM, OREGON