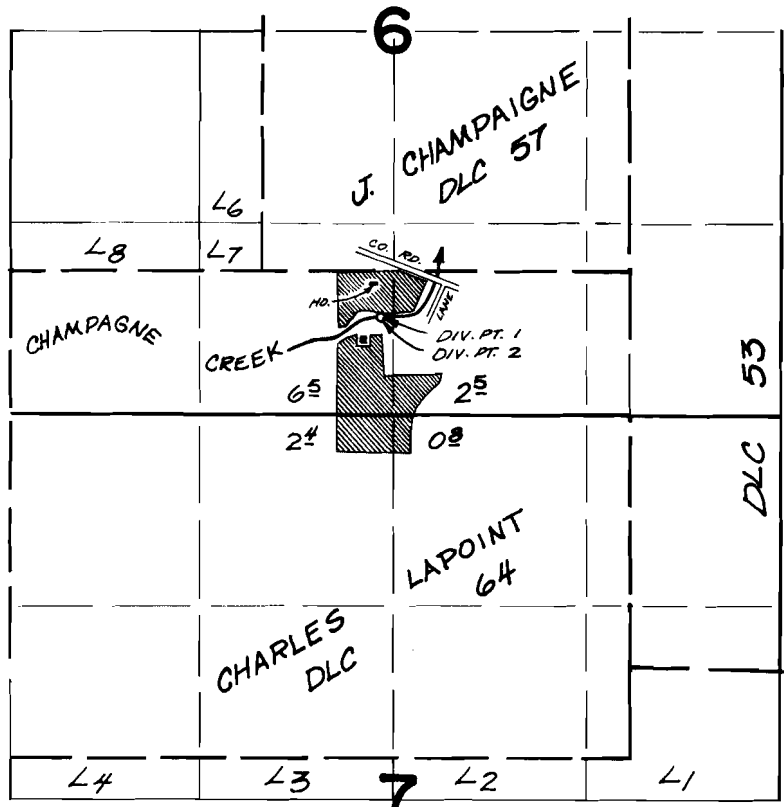


T.27 S. R.6 W. W.M.



DIV. PT. #1, 320'S. 2540'E.; DIV. PT. #2, 340'S. 2560'E.
BOTH FROM N.W. COR. CHARLES LAPPOINT DLC 64.

FINAL PROOF SURVEY UNDER

Application No. 45835 Permit No. 34221
IN NAME OF

ALBERT BROUGHTON

Surveyed JUNE 6, 1974, by L.M. TOLL