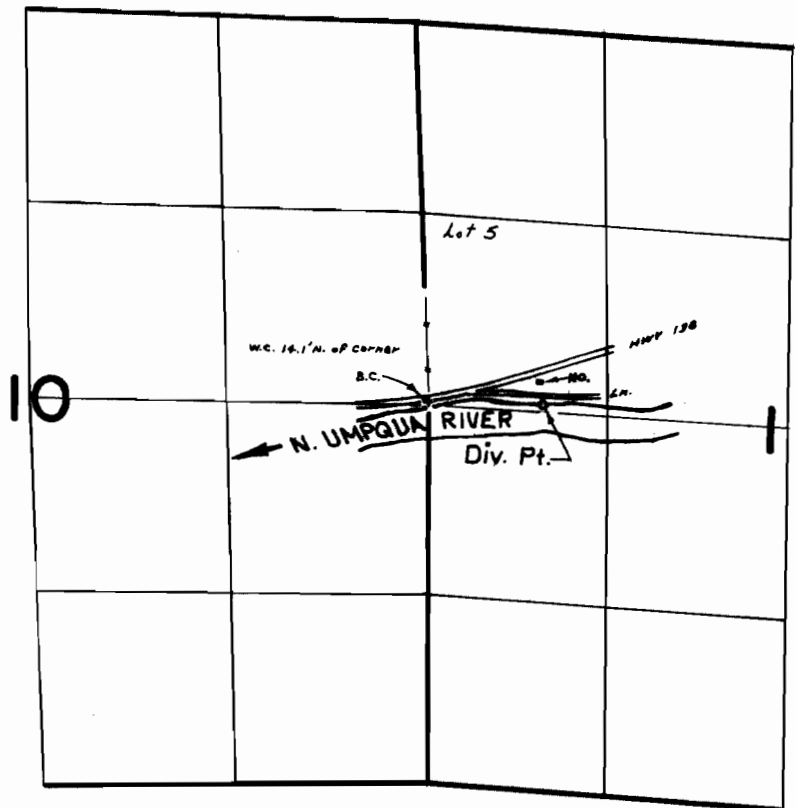


T.26S. R.3W. W.M.



DIV. PT. LOC: 20' N. & 780' E. FROM W. 1/4 CORNER SECTION 11

FINAL PROOF SURVEY
UNDER

Application No. 50217 Permit No. 37702
IN NAME OF

HOWARD J. BARTLETT

Surveyed SEPT. 16, 1975, by R. MUCKEN