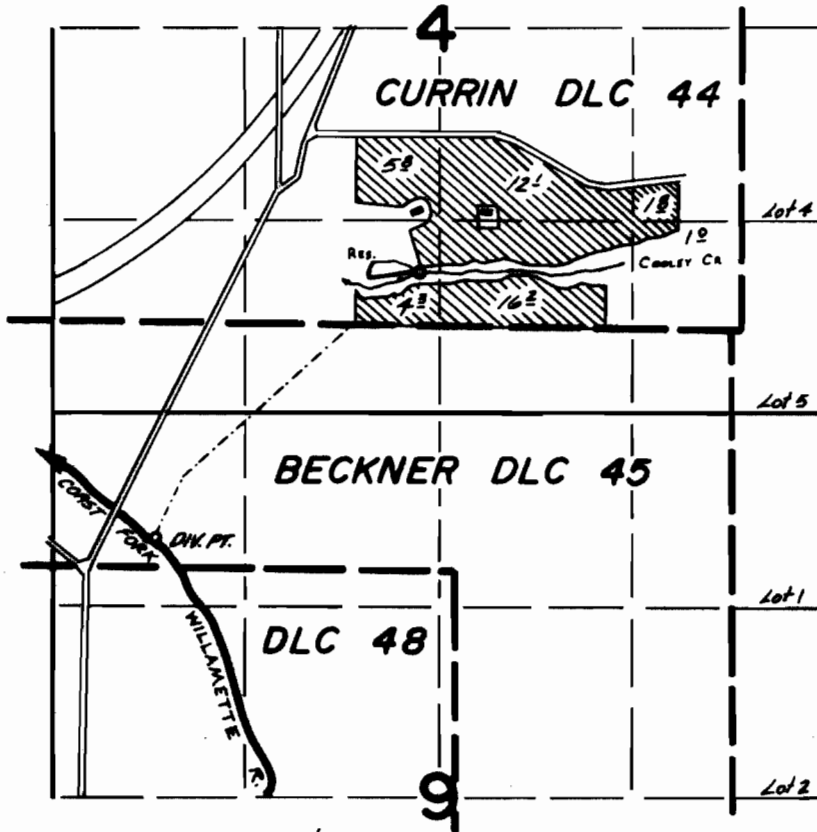


T.21S. R.3W. W.M.



DIV. PT. 1420'S. & 4000'W. FROM S.E. COR. CURRIN DLC 44
 RES. DIV. PT. 370'N. & 2200'W. FROM S.E. COR CURRIN DLC 44

FINAL PROOF SURVEY UNDER

R-56229 R-6690
 56228 42246
 Application No. 42768 Permit No. 31276
 IN NAME OF

WILLIAM CLAUSSEN

Surveyed AUG. 13, 1974, by P. NORBY
 JUNE 18, 1980, by C. L. HUGHES