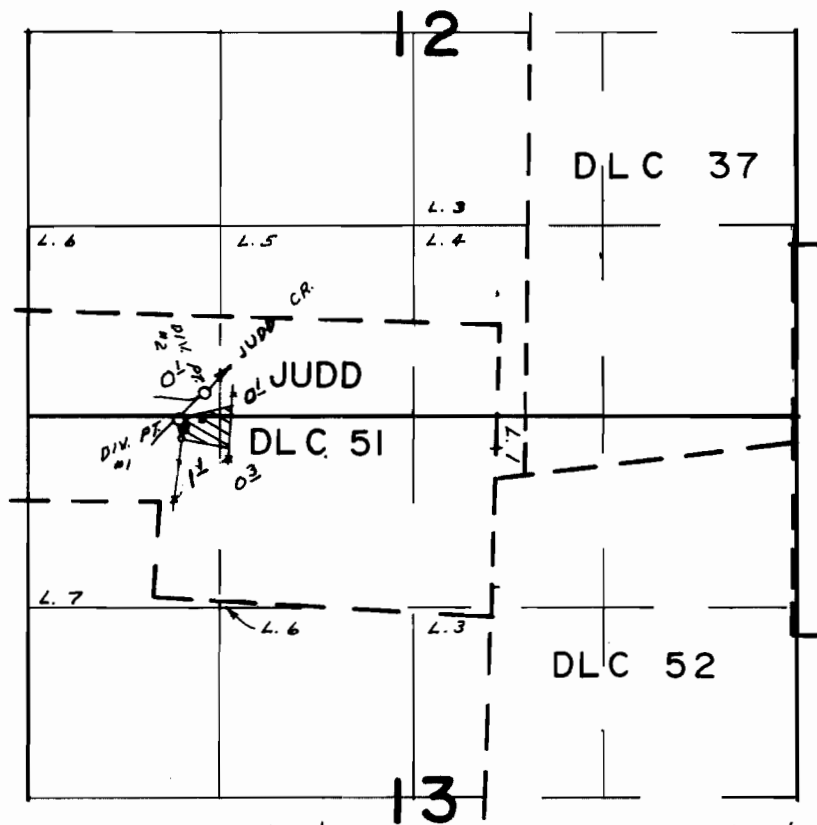


T.30S. R.6W. W.M.



DIV. PT. 1 LOC. 30' S & 1040' E, DIV. PT. 2 LOC. 170' N & 1220' E, BOTH FROM NW COR. SEC. 13

FINAL PROOF SURVEY UNDER

Application No. 45901 Permit No. 34276
IN NAME OF

GEORGE M. GIBSON

Surveyed OCT. 24 1975, by LH NUNN