

RECEIVED  
NOV 3 1969

STATE ENGINEER  
SALEM, OREGON


ELMO ANGELE

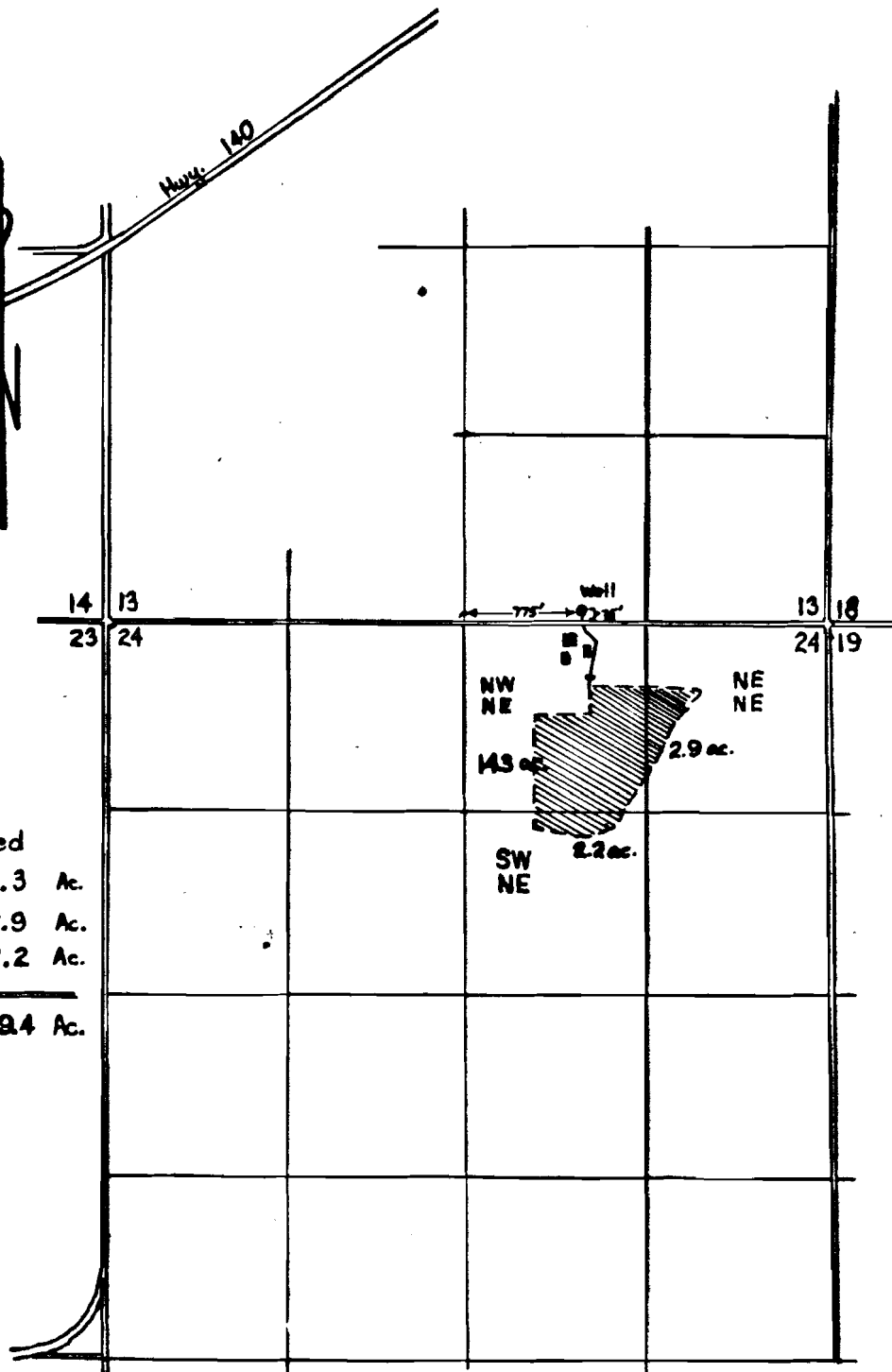
Water Right Application Map

Scale: 4" = 1 mile

Traced from Aerial Photo

Township 39 South  
Range 19 East

	Area to be irrigated	
NW 1/4 NE 1/4	14.3	Ac.
NE 1/4 NE 1/4	2.9	Ac.
SW 1/4 NE 1/4	2.2	Ac.
<hr/>		
Total	19.4	Ac.



APPLICATION NO. G-5030