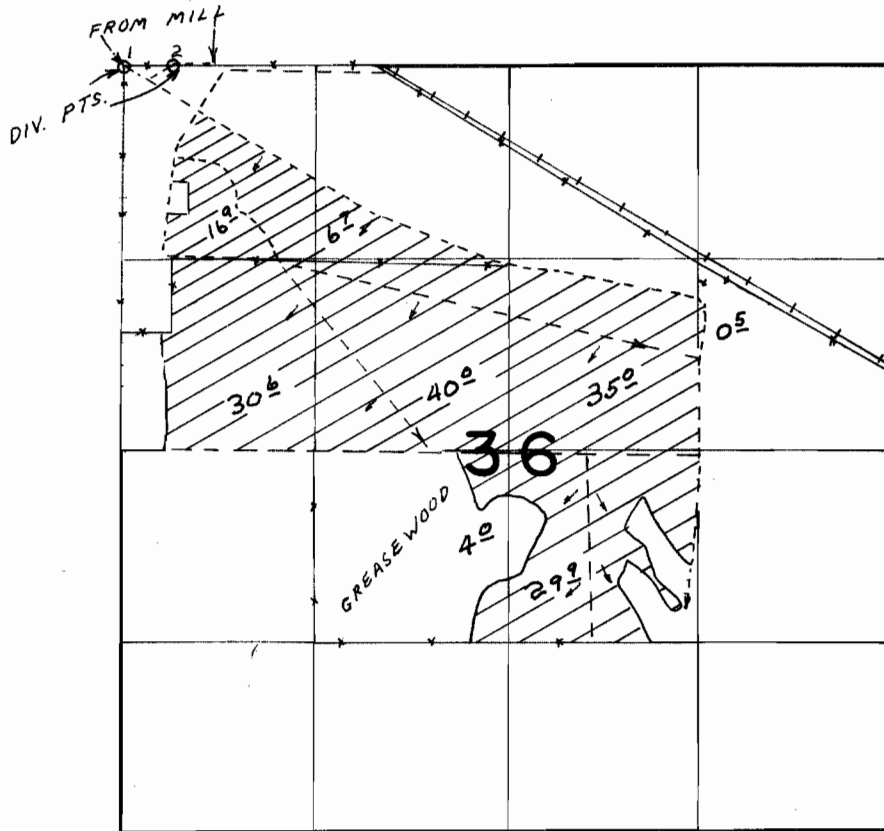


T.23S. R.30E. W.M.



DIV. PTS. LOC. 1- AT. NW COR., 2- 350' E FROM NW COR., SEC. 36

FINAL PROOF SURVEY UNDER

Application No. 42222 Permit No. 31576
IN NAME OF

WALTER BAKER

Surveyed JUL. 30. 1975, by L.H. NUNN