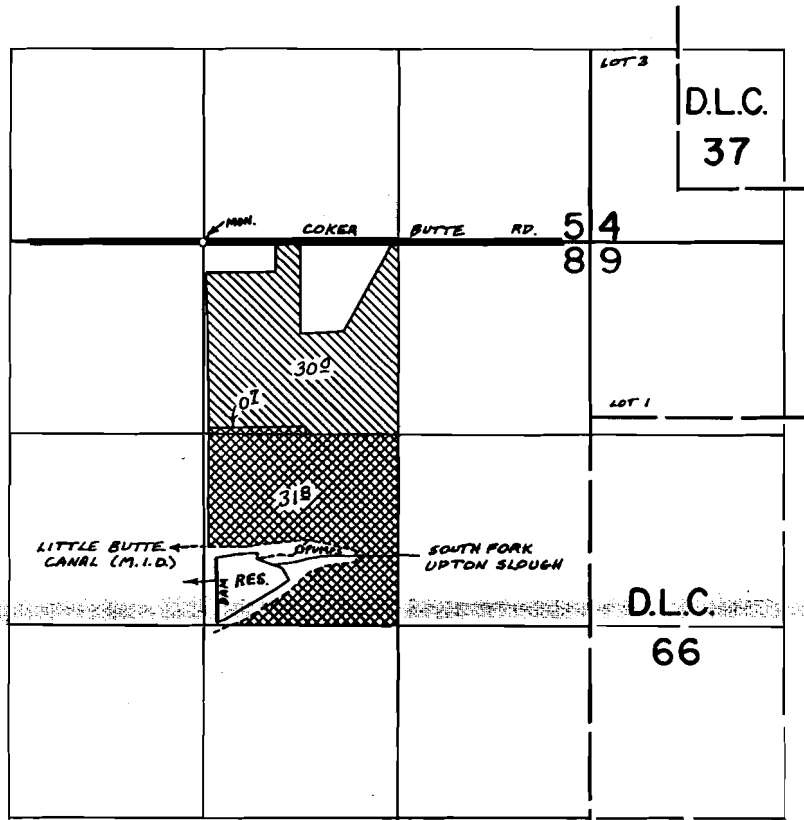


T. 37S. R. 1W. W.M.



DAM LOC.: 2330'S. & 90'E. FROM N 1/4 COR. SEC. 8
 CANAL DIV. PT. (FROM S. FORK LITTLE BUTTE CR.) LOC.: 600'S. & 525'W. FROM
 E. 1/4 COR. SEC. 29, T. 36S., R. 2E., W.M.

- TEMPERATURE CONTROL FROM S. FORK LITTLE BUTTE CR. AND S. FORK UPTON SLOUGH
- SUPPLEMENTAL IRRIGATION FROM S. FORK UPTON SLOUGH

FINAL PROOF SURVEY UNDER

R-45725 R-5420
 45726 34121
 Application No.47122. Permit No.35285..
 IN NAME OF

.....DUNBAR CARPENTER.....

Surveyed ..NOV. 3... 1975., by ...L. IOLL.....