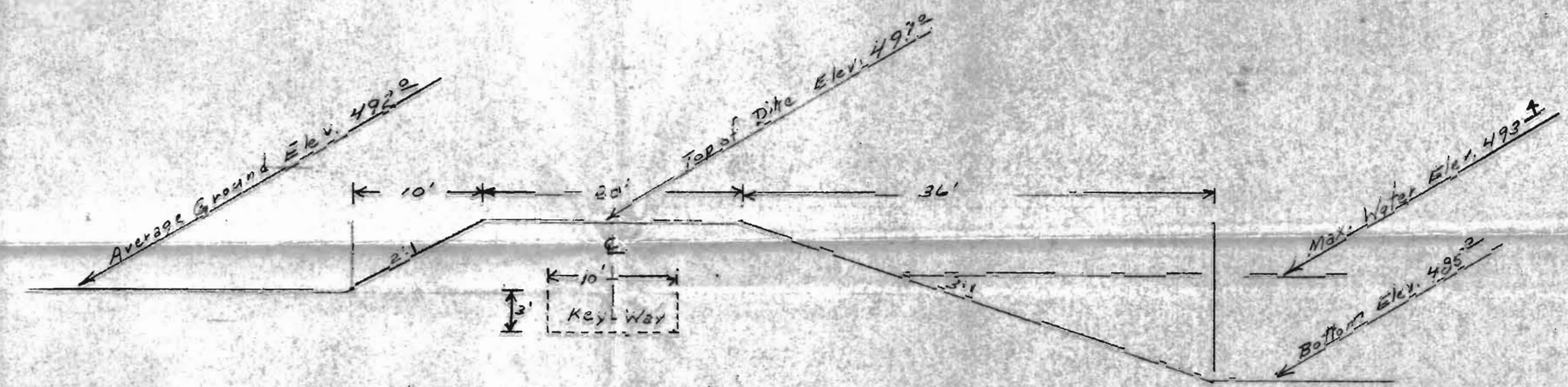
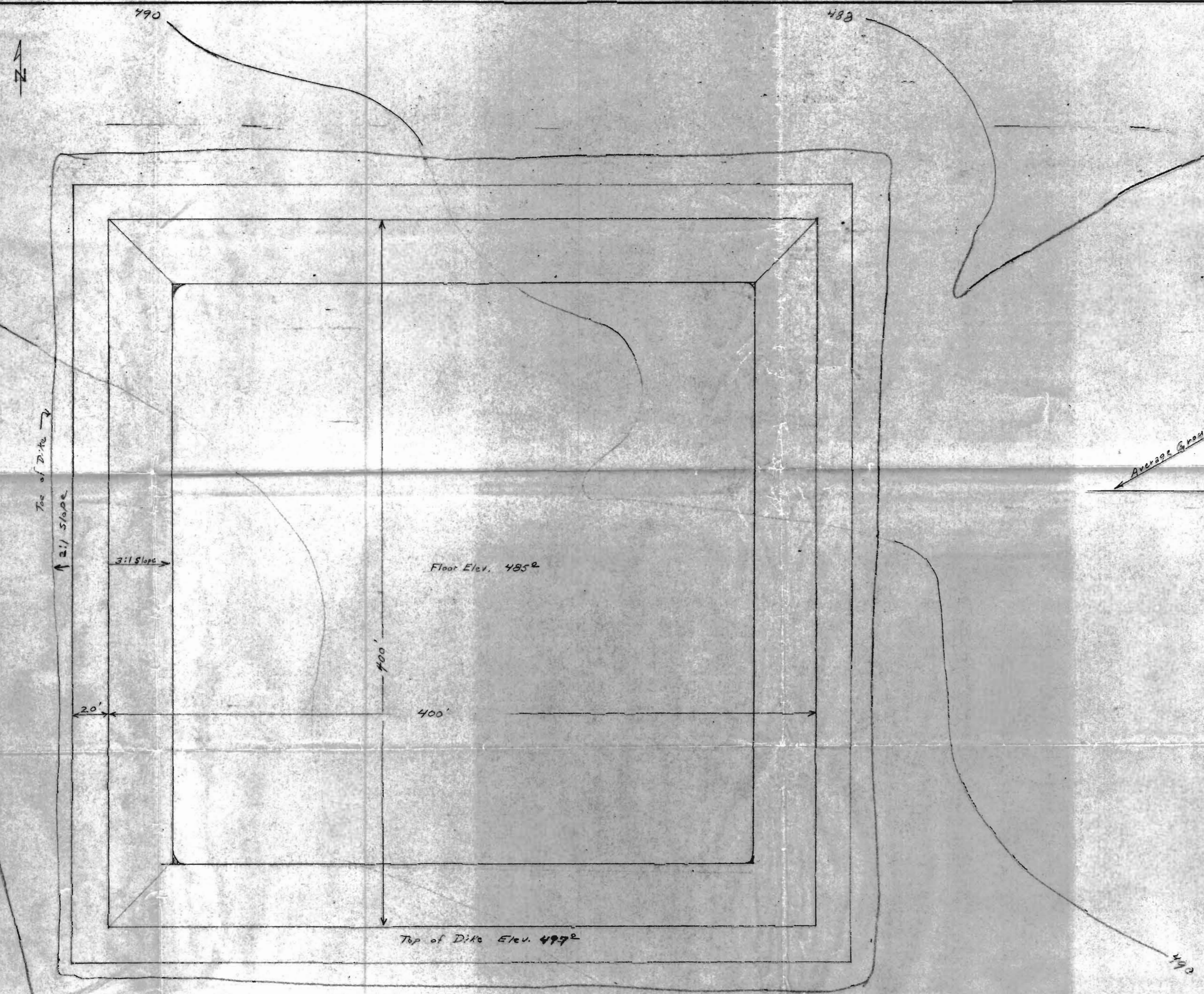


RECEIVED
DEC 9 1970
STATE ENGINEER
SALEM, OREGON

RECEIVED
NOV 10 1970
STATE ENGINEER
SALEM, OREGON



Typical Dike X-Section

1. Excavate keyway 3 ft deep and 10 ft wide at 2 of d.m.
2. Place embankment material in keyway and dike in 6 inch lifts and compact with vibratory roller.

CAPACITY CHART

Depth - Feet	Acre-Feet Volume
1	2.51
2	5.12
3	7.83
4	10.52
5	13.31
6	16.30
7	19.60
8	22.80
8.4	24.0

Scale - 1 in. = 40 ft.

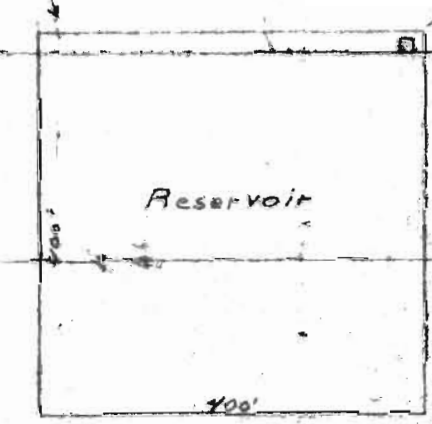
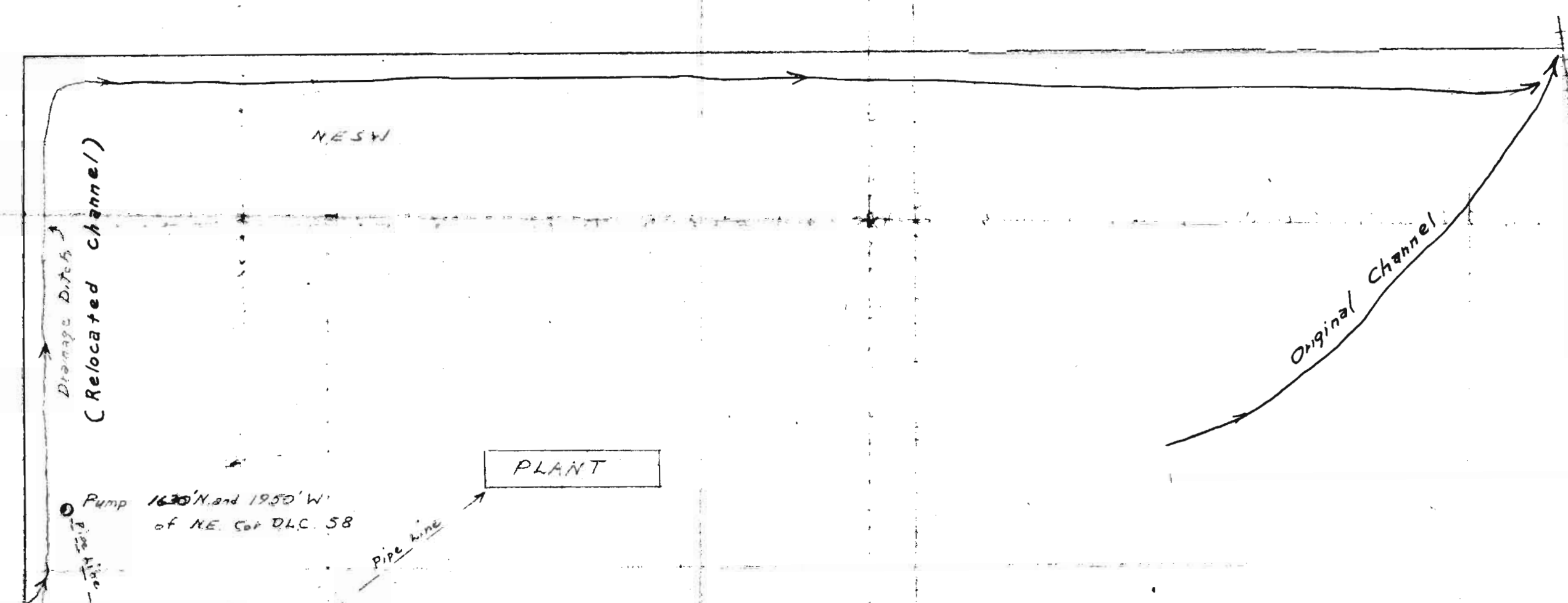
Application No. 2-47709
Permit No.

DWG. NO.	TITLE
REFERENCES	
Roseburg Lumber Co.	
Goshen Reservoir	
DWN. H.W. Johnson	APP. J.P.
DATE 10/29/70	SCALE Verr



D-W-59

4402
23



PLANT

Pump 1630' N. and 1950' W.
of NE. Cor. DLC. 58

Reservoir

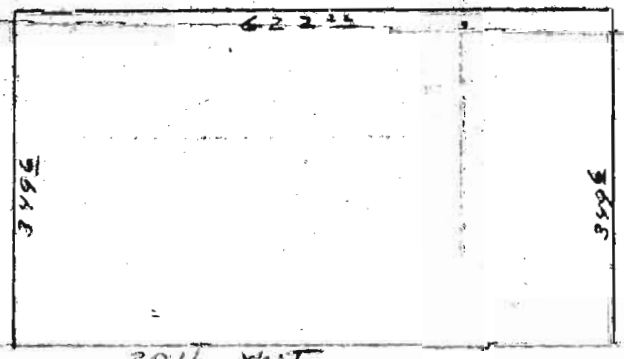
Bethena Spout DLC. 42

SESW

22 23 T.19S. R.3W.
27 26

NW. Cor. DLC. 58

Silas Brown D.L.C. 58



465' ± East

SE Cor. DLC. 42
NE Cor. DLC. 58

REGISTERED
OREGON
LAND SURVEYOR

MAY 13, 1960
HOWARD W. JOHNSTONE

WATER RIGHT MAP
Section 23, T.19S, R.3W
for ROSEBURG LUMBER CO
Gresham, Oregon
Scale - 1 in. = 200 ft.
Oct. 27, 1970 HWJ.

RECEIVED
OCT 27 1970
STATE ENGINEER
SALEM, OREGON

RECEIVED
NOV 10 1970

R-17709
97710