

**NOTE:**

This reinforcing (#4@12) is adequate for dead load of 6" slab plus live load of live stock, but inadequate for moving concentrated loads. Vehicles under 4 tons may run loaded wheel not more than 3' from edge of slab.

**TOP SLAB REINFORCING SCHEDULE**

**5 TON MOVING LOAD:**

Place #5@12" o.c. Ea. Way in Bot. of Slab  
Place 5 #5@6" o.c. Continuous Bars Ea. Way in Bottom of Slab over Columns  
Place 5 #5x7'-0" @ 6" o.c. E.W. Top over Columns

**6 TON MOVING LOAD**

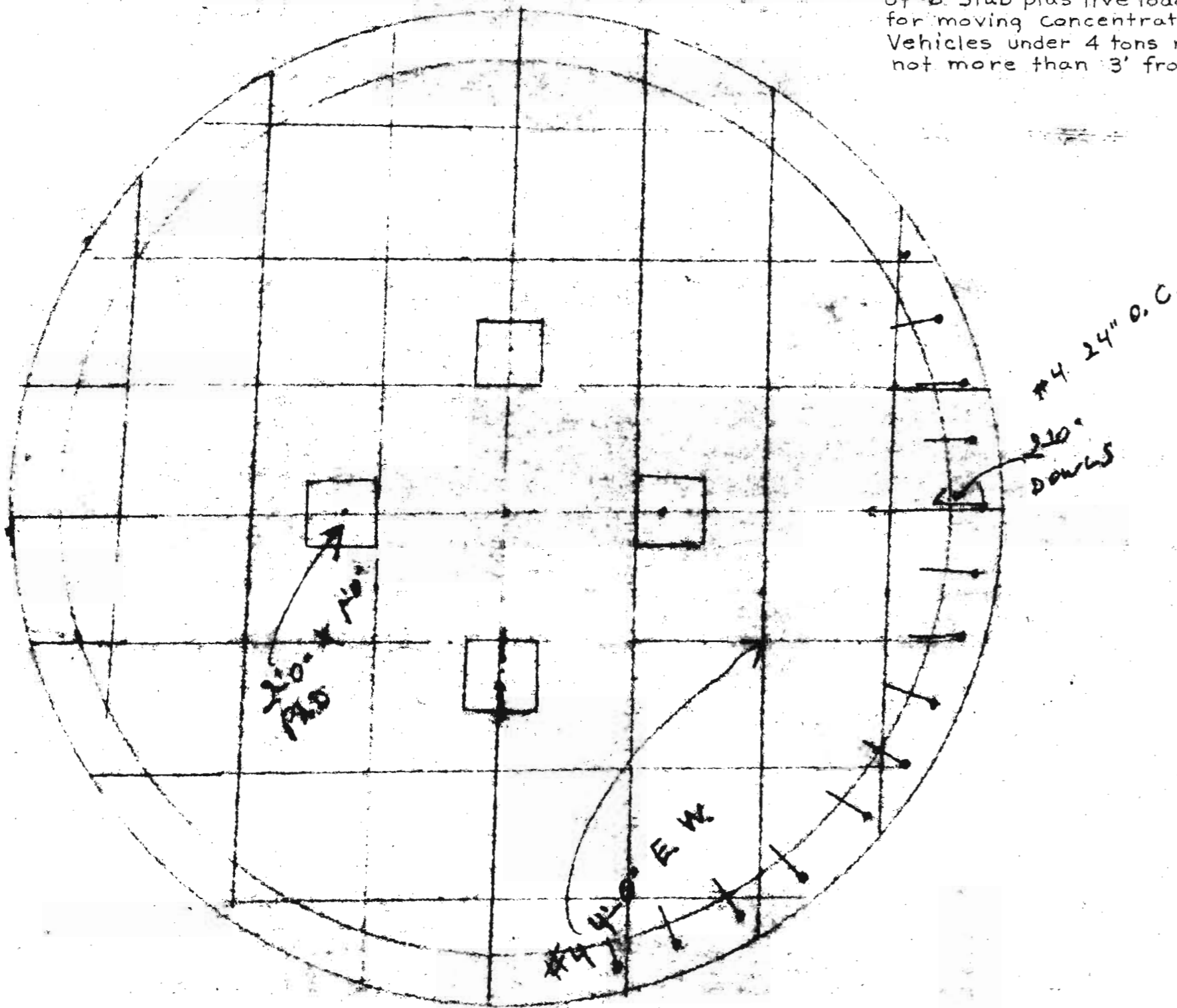
Place #5@10" o.c. - Ea. Way in Bot. of Slab  
Place 6 #5@5" o.c. - Cont. E.W. Bot. over Columns  
Place 6 #5x7'-0" @ 5" o.c. E.W. Top over Columns

**7 TON MOVING LOAD**

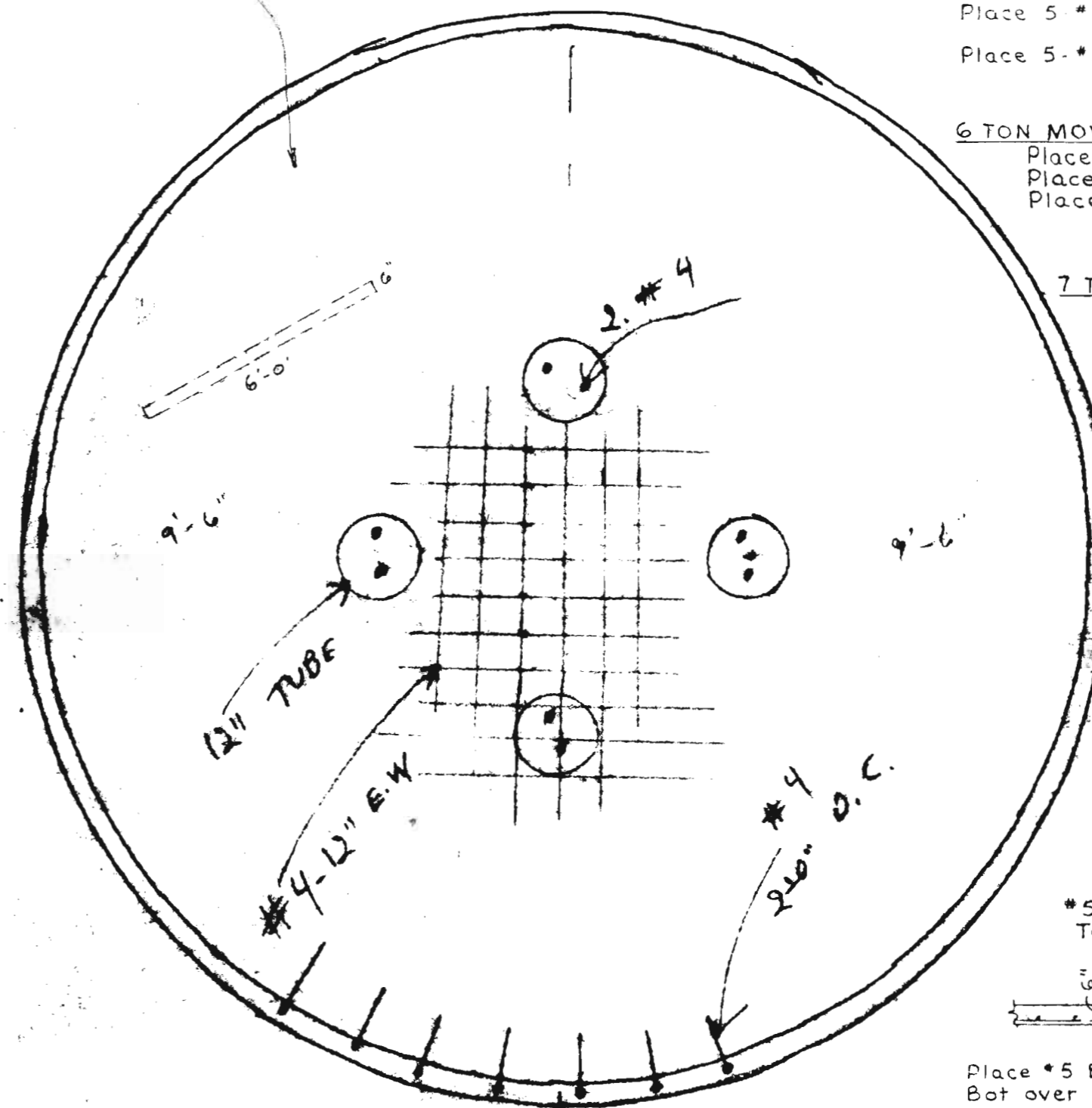
Place #5@9" o.c. Ea. Way in Bot. of Slab  
Place 7 #5@4 1/2" o.c. Cont. E.W. Bot. over Cols.  
Place 7 #5x7'-0" @ 4 1/2" o.c. E.W. Top over Cols.

**NOTE:**

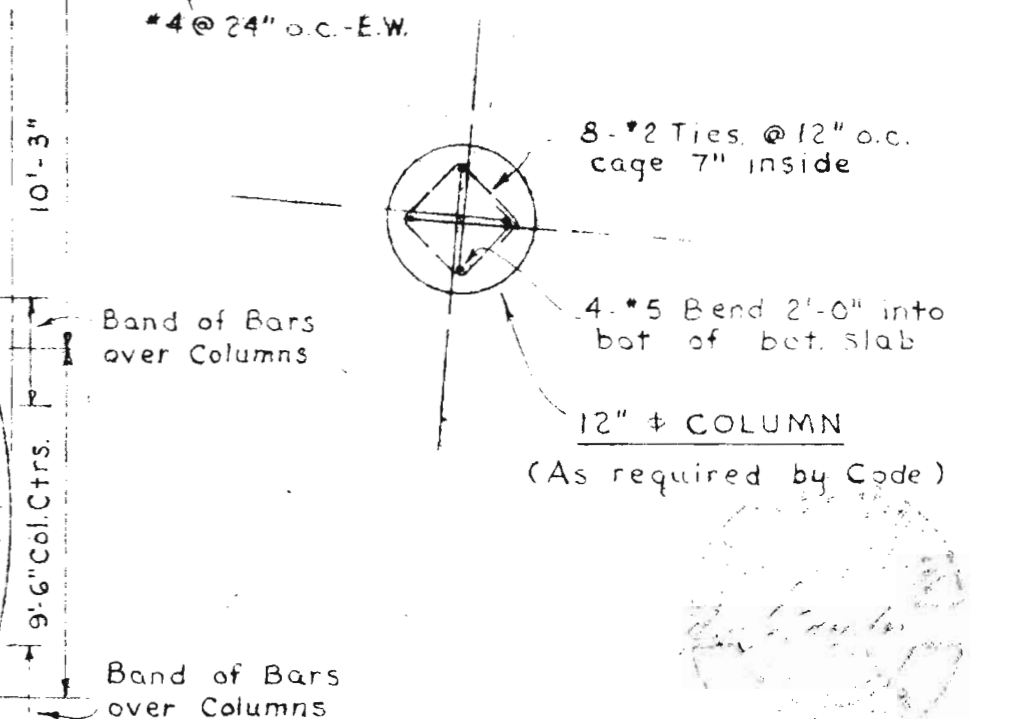
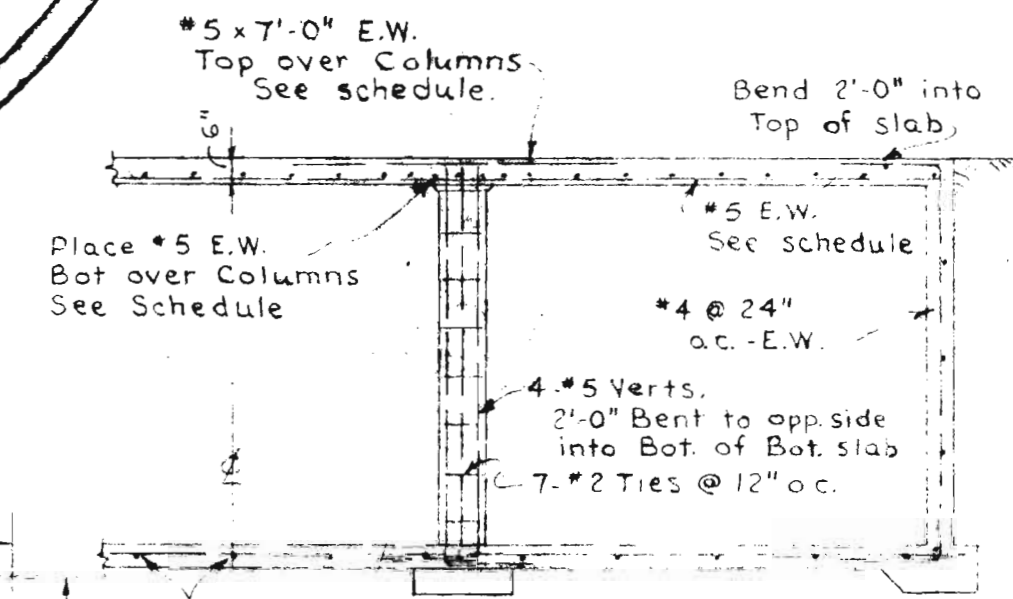
If nothing is to prevent loaded Vehicle from straddling Column, Slab thickness should be made 8" or thicken Slab to 10" x 42" x 42" over Columns.



**BOTTOM SLAB**

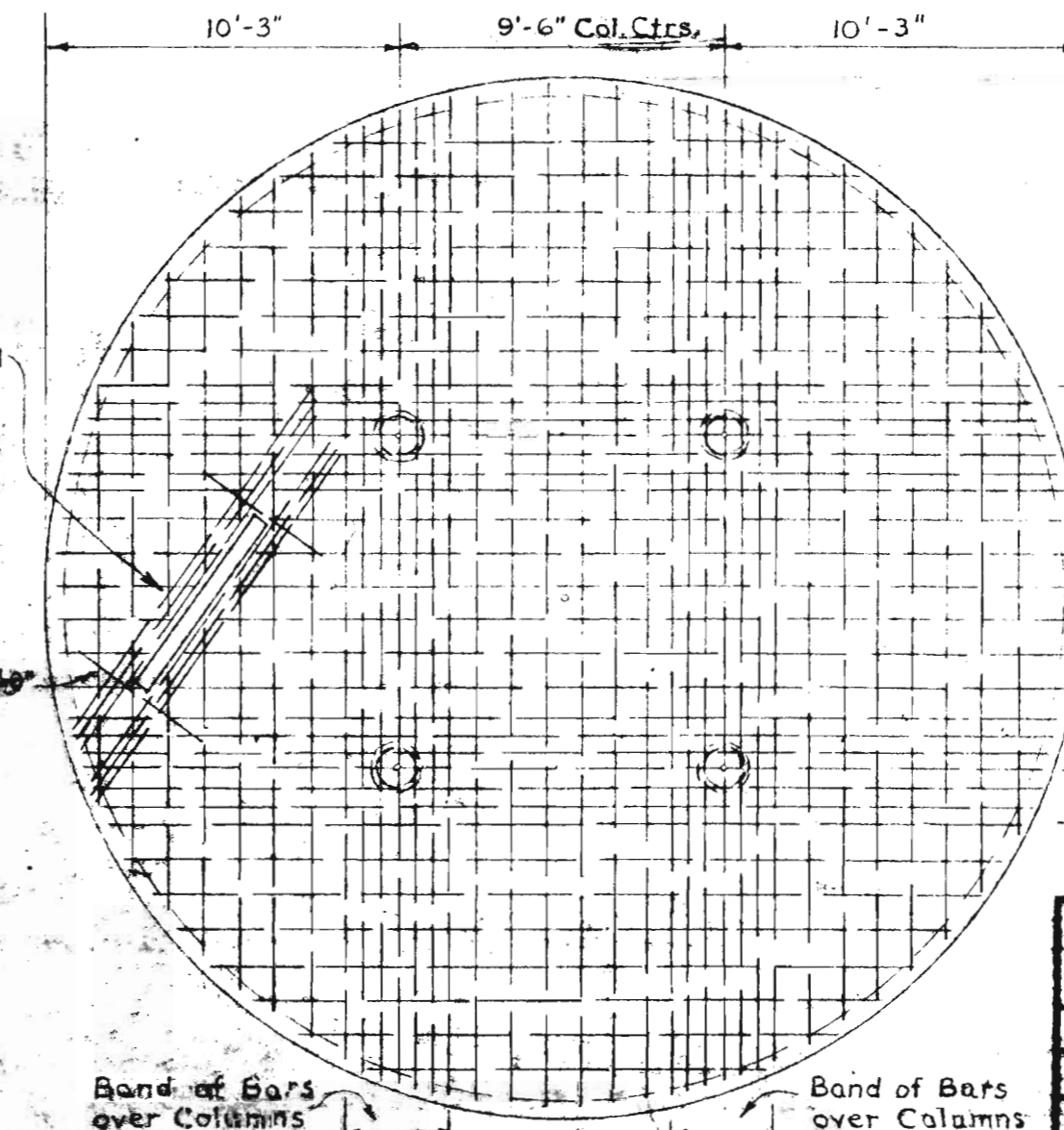
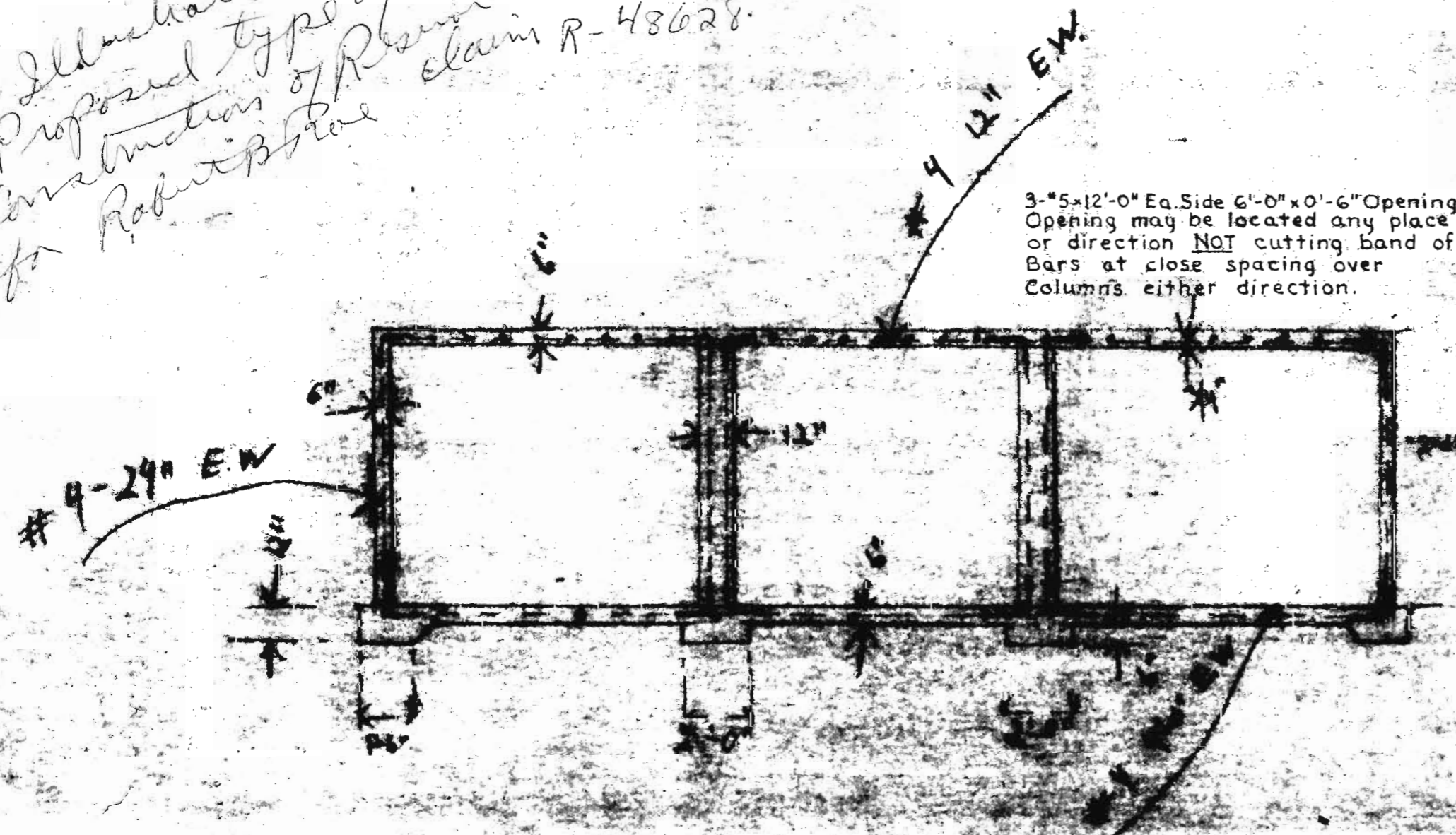


**TOP SLAB**



**RECEIVED**  
JAN 19 1922  
STATE ENGINEER  
SALEM, OREGON

*Illustration of Proposed type of Construction of Reinforcement for Robert Stone claim R-48628.*



**PLAN OF ROOF SLAB**

See Schedule for Reinforcing  
Scale: 3/16" = 1'-0"

JOHN W. CUNNINGHAM & ASSOC., CONSULTING ENGINEERS  
714 Oregon Bank Bldg., Portland, Oregon

<b>30' TANK</b>		<b>5.5X MIX CONC</b>	
		<b>3 1/2 Max. Slump</b>	
DESIGNED BY: <b>R-PA</b>	APPROVED BY:	DRAWN BY: <b>2-R</b>	REVISION:
<b>KROO CONST CO</b>		<b>DRAWING NUMBER</b>	
<b>RT-1 123A</b>			

**NEWBERG ORE**