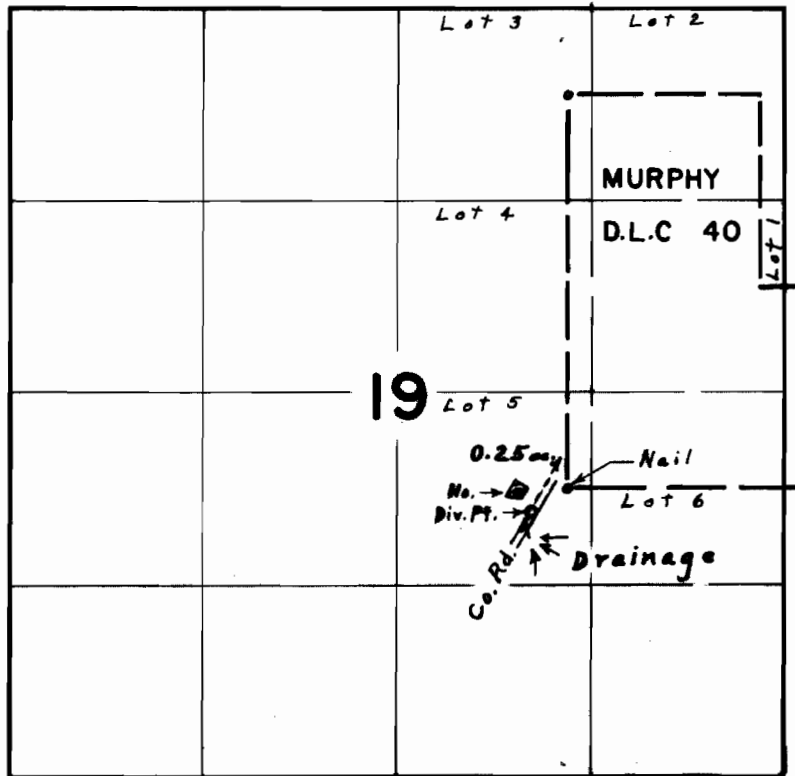


T.37S. R.5W. W.M.



Div. Pt. 100' S. & 250' W. from S.W. Cor. Murphy D. L. C. #40

FINAL PROOF SURVEY
UNDER

Application No. ~~49434~~ Permit No. ~~36728~~
IN NAME OF

GLADYS G. AINSWORTH

Surveyed May 15, 1975, by L. E. Gould