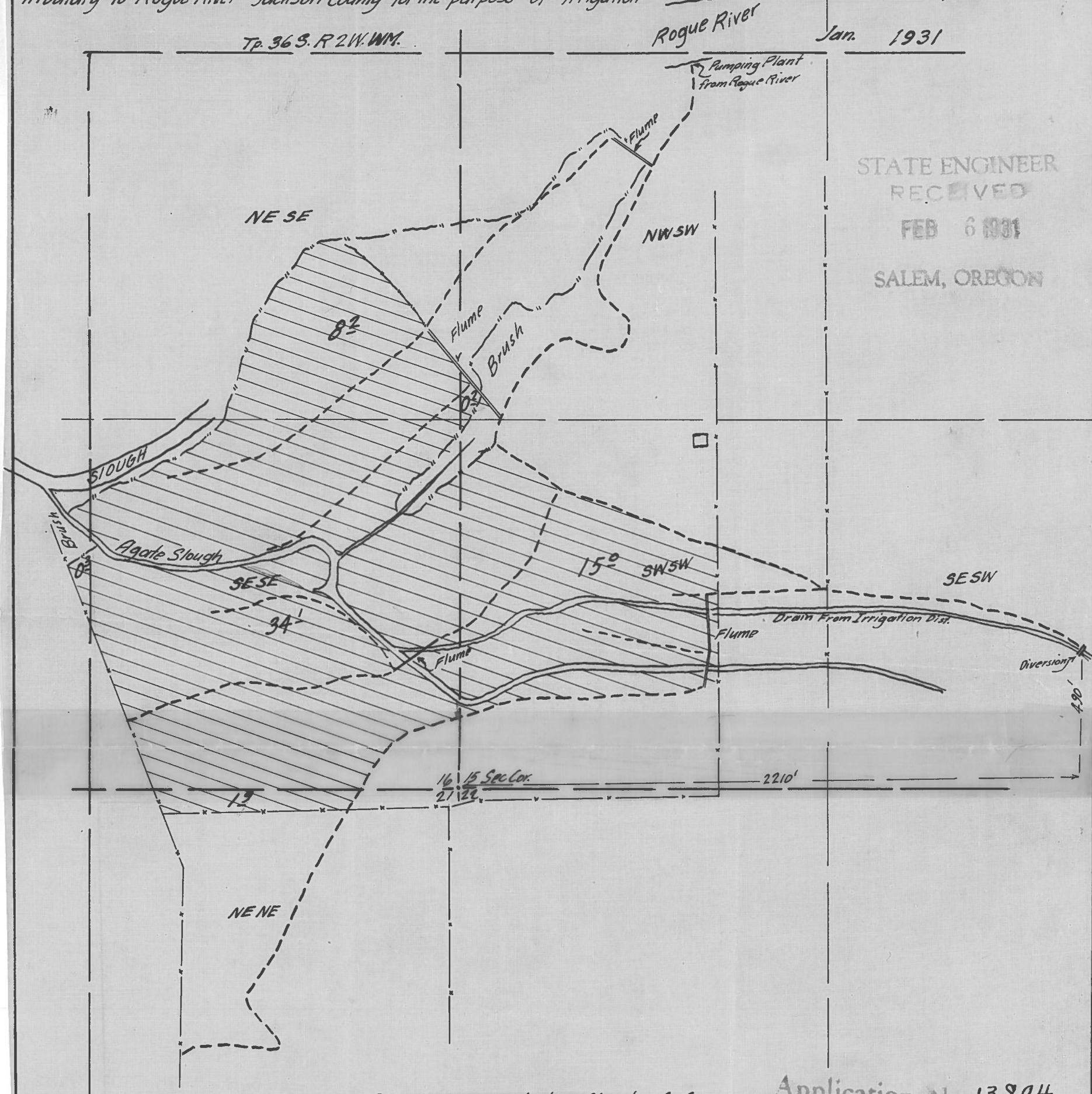


Supplemental Map
Accompanying application of Helen Mace of Central Point Jackson County Oregon to the waters of Agate Slough
tributary to Rogue River Jackson County for the purpose of irrigation
App 83894

Tp. 36 S. R 2 W. W.M.

Jan. 1931

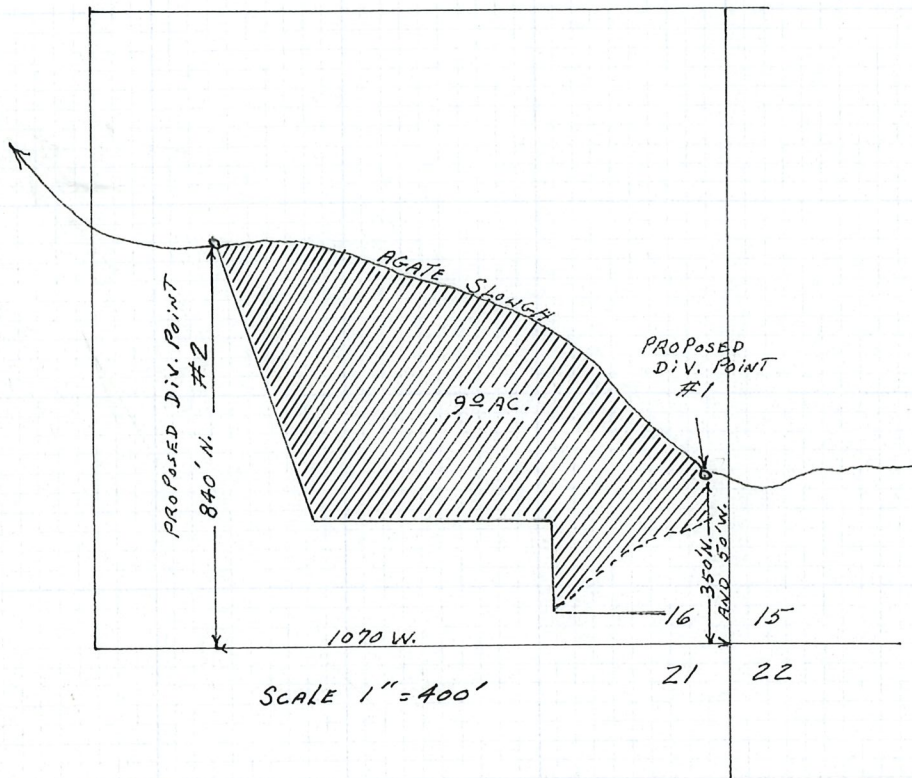


STATE ENGINEER
RECEIVED
FEB 6 1931
SALEM, OREGON

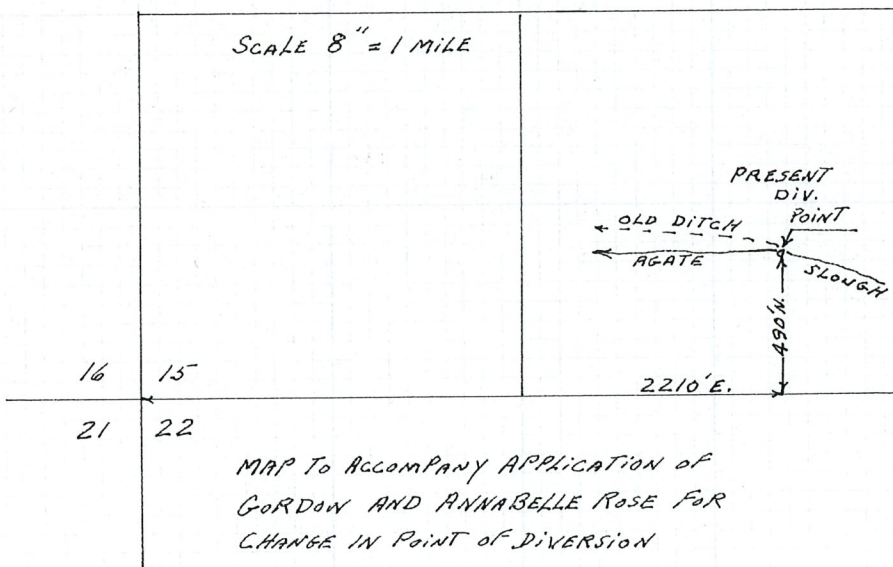
Map made from Plane Table survey made by Chester A Cummings

Application No. 13894
Permit No. 10001

T.36S. R.2W. W. M.

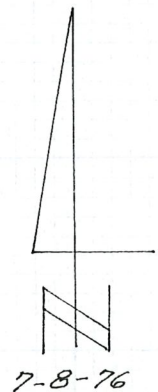


T.36S. R.2W. W. M.

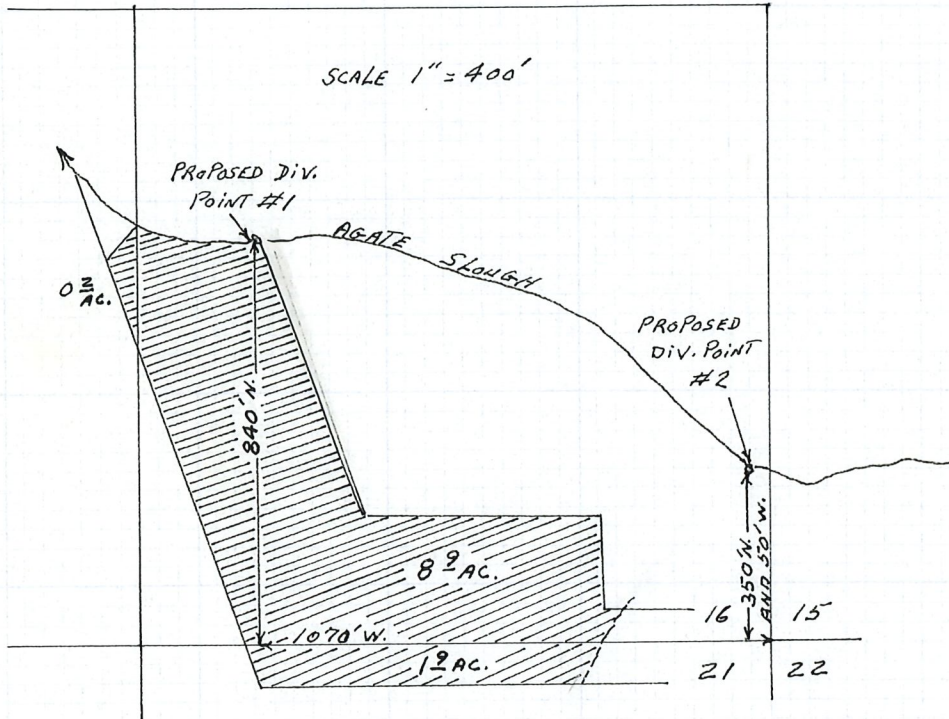


MAP TO ACCOMPANY APPLICATION OF GORDON AND ANNABELLE ROSE FOR CHANGE IN POINT OF DIVERSION

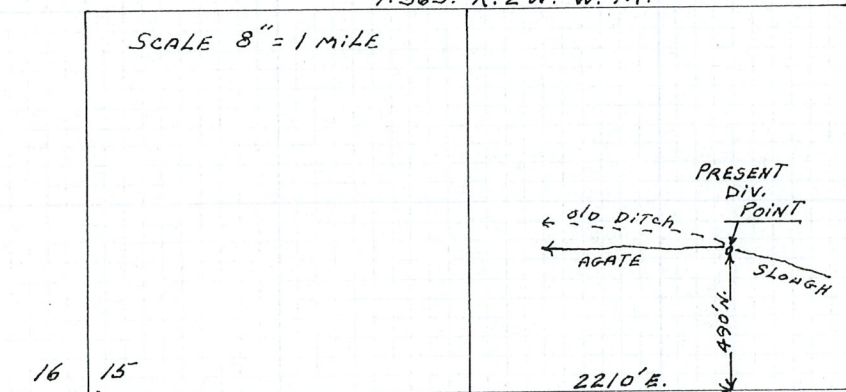
RECEIVED JUL 13 1976 WATER RESOURCES DEPT SALEM, OREGON



T.36S. R.2W. W.M.



T.36S. R.2W. W.M.

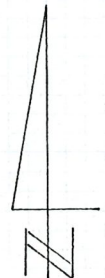


MAP TO ACCOMPANY APPLICATION OF HENRY L. AND FAE L. MORSS FOR CHANGE IN POINT OF DIVERSION

RECEIVED

JUL 13 1976

WATER RESOURCES DEPT SALEM, OREGON



7-8-76