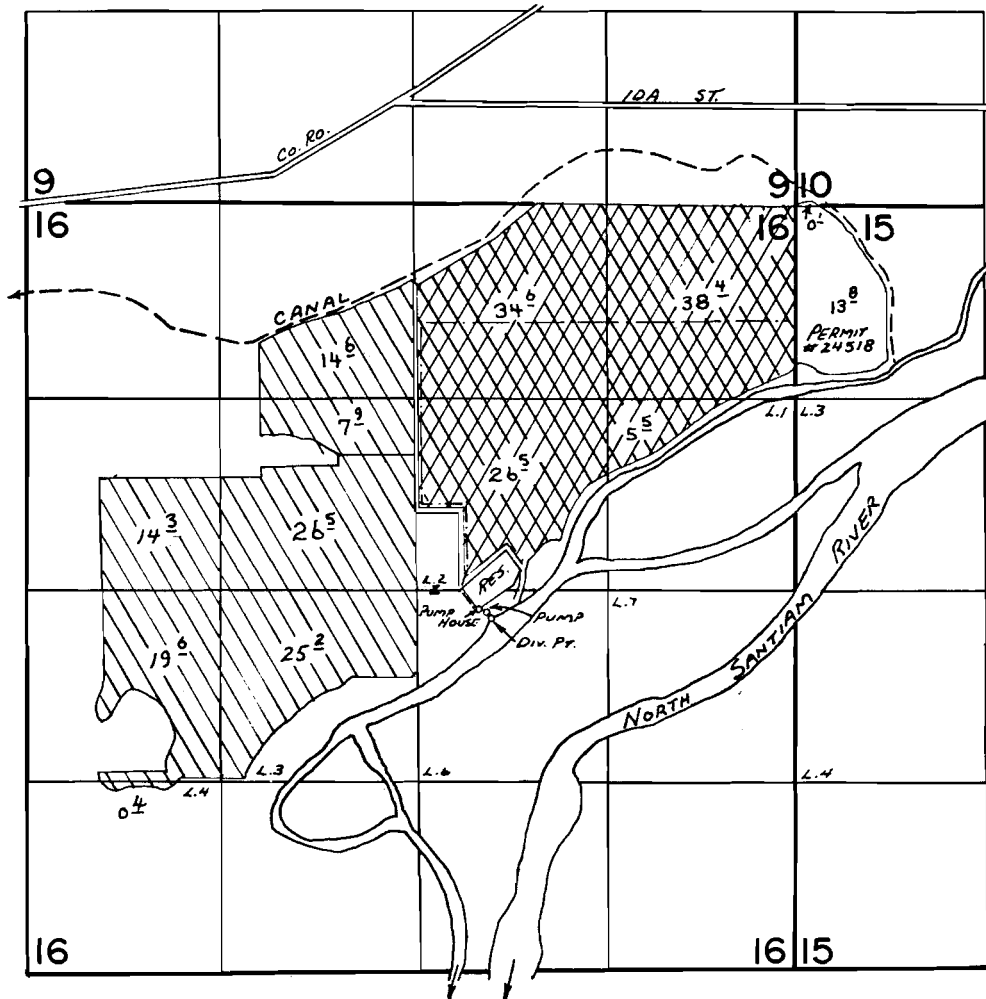


# T.9S.,R.1W.,W.M.



P.O.D.: Reservoir - 120' S & 420' E; Stream - 190' S & 500' E both from C<sup>1</sup>/<sub>4</sub> corner Section 16 T9S R1W W.M.  
 Detroit Reservoir

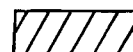
## FINAL PROOF SURVEY

Unn. & Detroit Reservoirs



UNDER

North Santiam River



Application No. 52753 R:52838 Permit No. 38205 R:6170...  
 IN NAME OF

STAYTON CANNING CO., COOP.

Surveyed June 9, 1976, by L. Toll