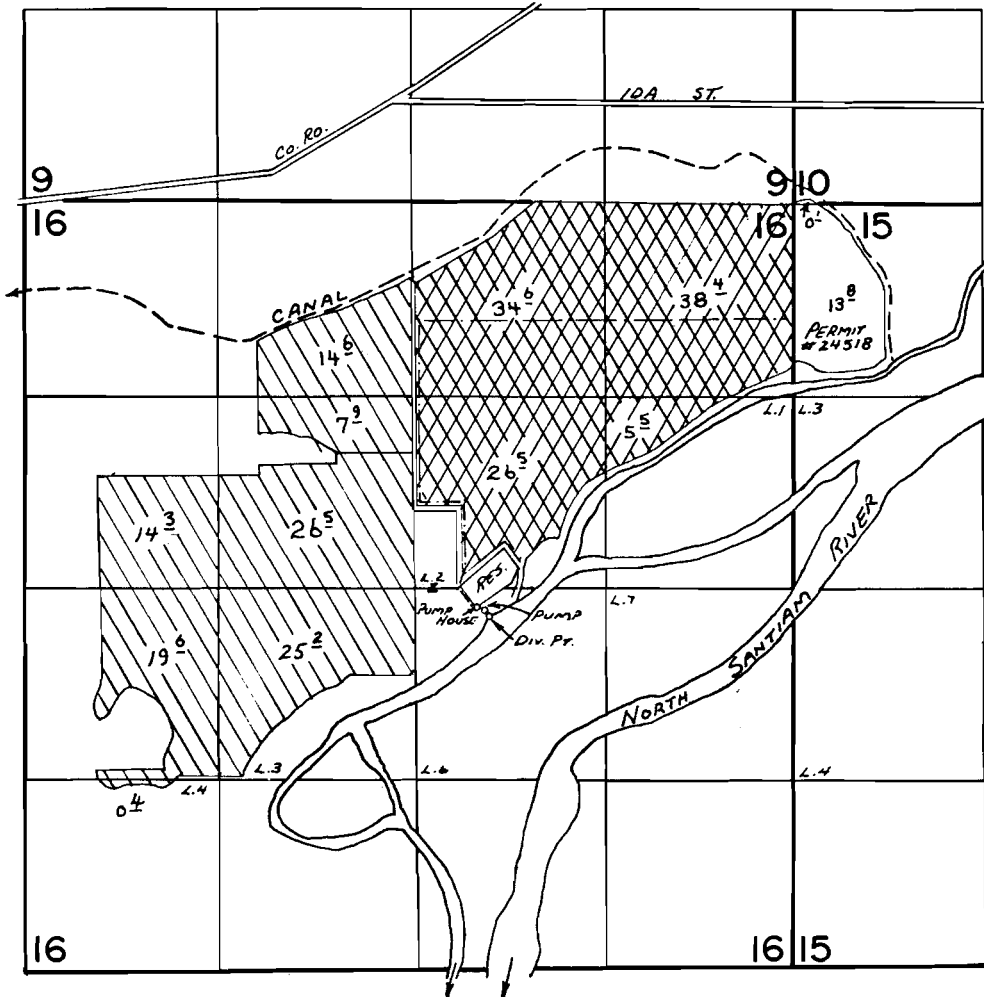


# T.9S.,R.1W.,W.M.



P.O.D.: Reservoir - 120' S & 420' E; stream - 190' S & 500' E both from C<sup>1</sup>/<sub>4</sub> corner Section 16 T9S R1W W.M.  
 Detroit Reservoir

## FINAL PROOF SURVEY

Unn. & Detroit Reservoirs



UNDER

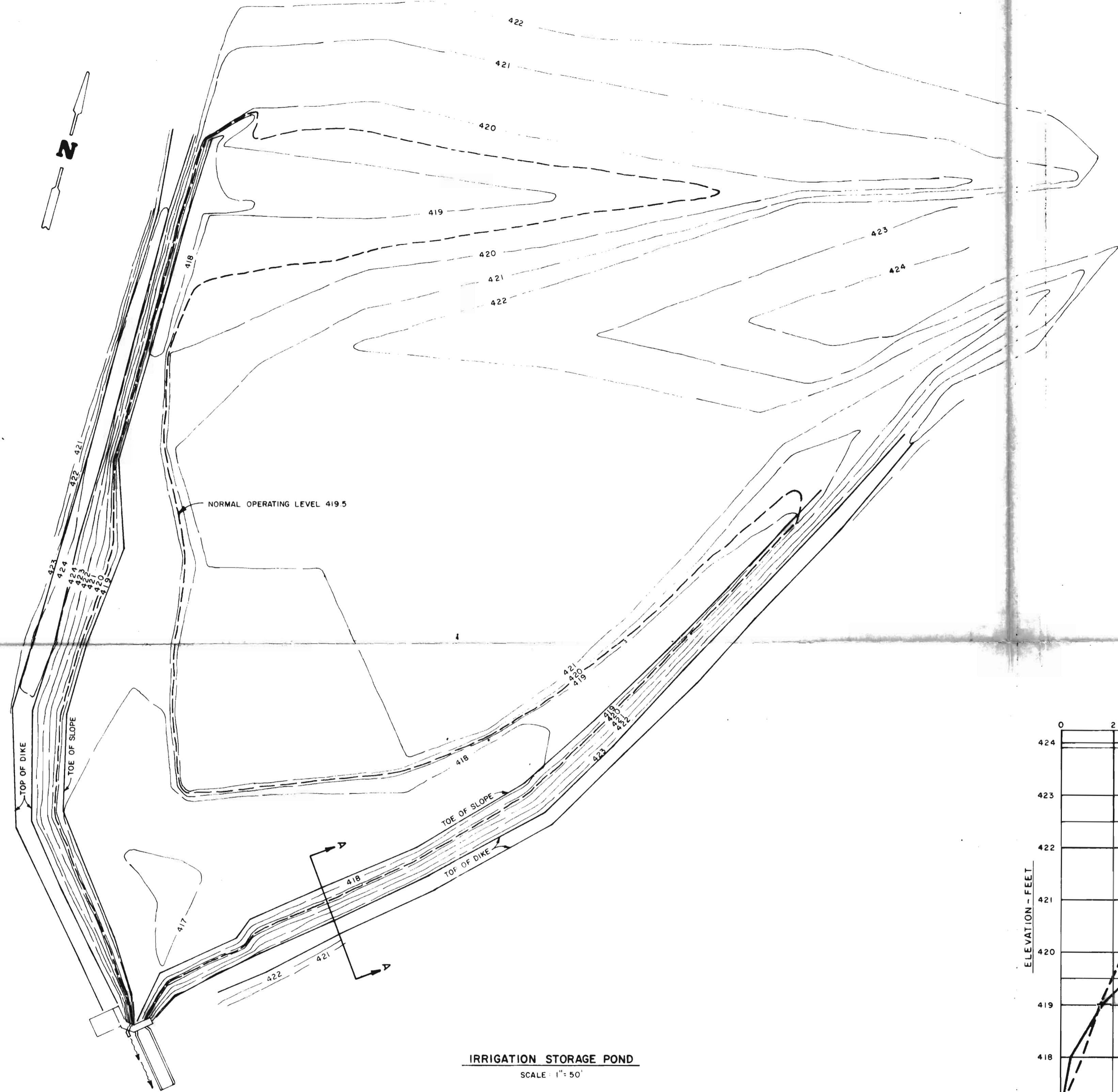
North Santiam River



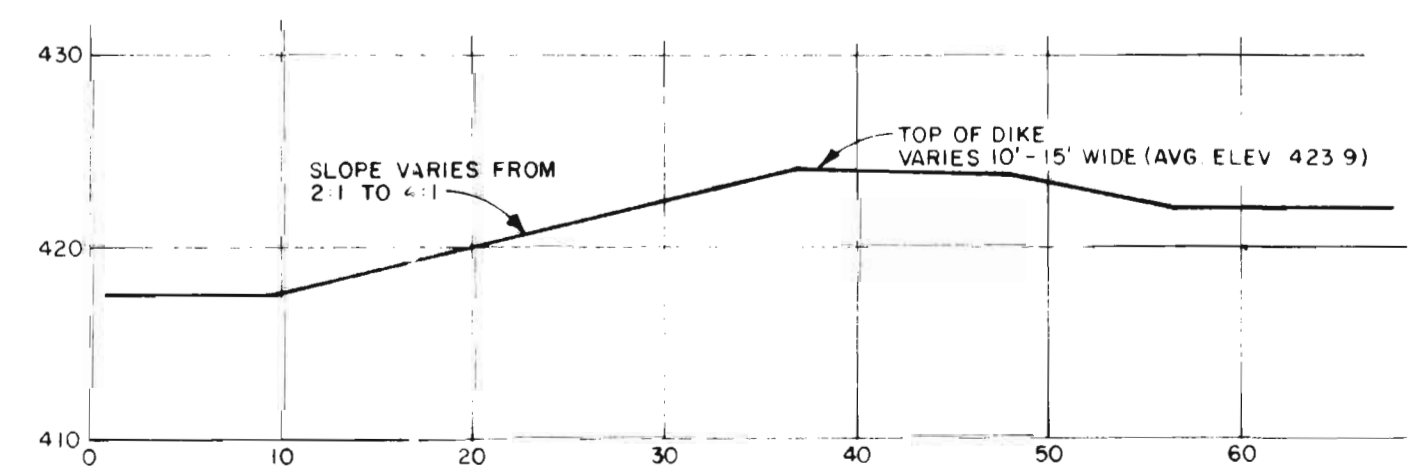
Application No. 52753 R:52838 Permit No. 38205 R:6170.  
 IN NAME OF

STAYTON CANNING CO., COOP.

Surveyed June 9, 1976, by L. Toll

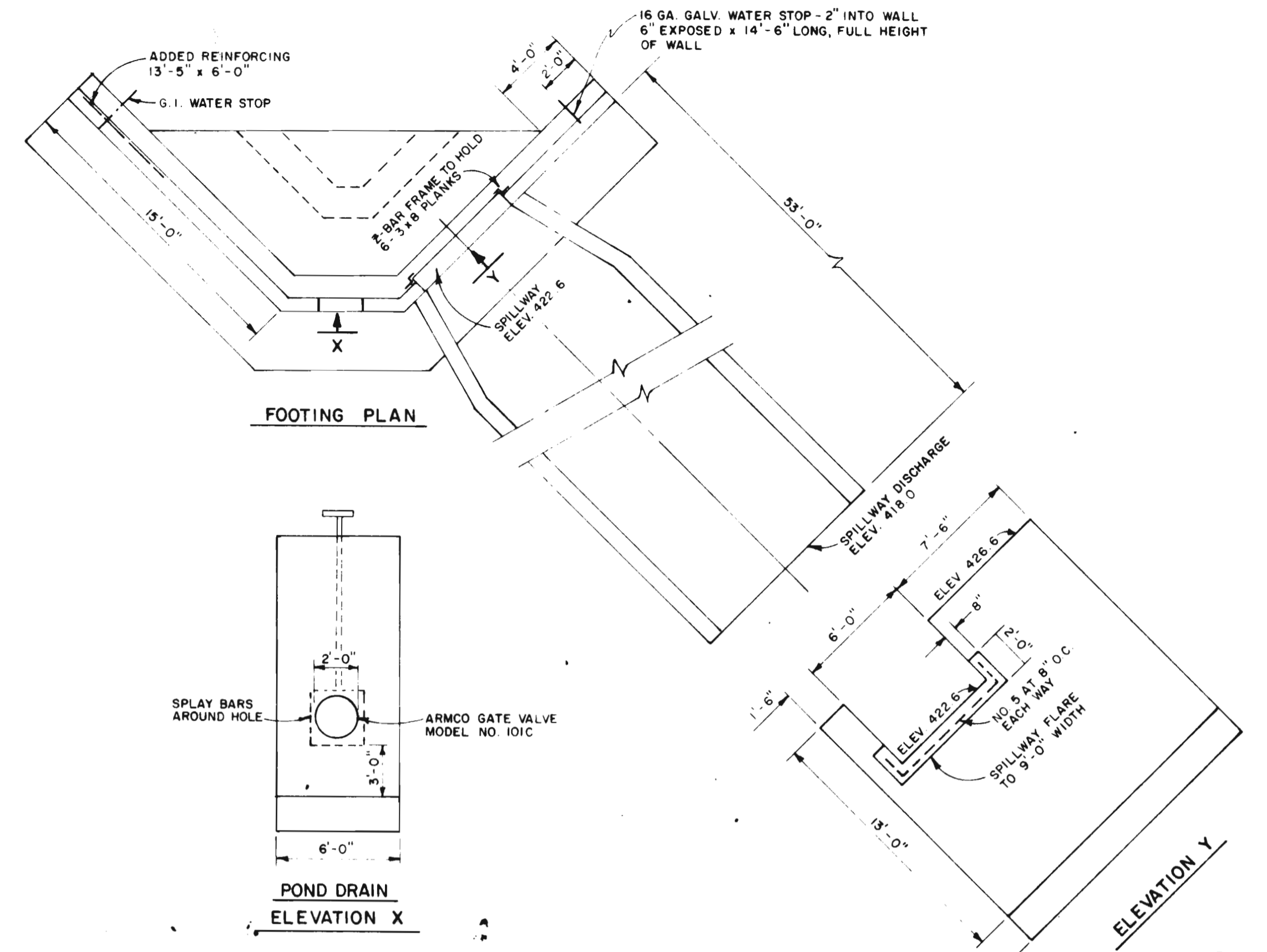


**IRRIGATION STORAGE POND**  
SCALE: 1" = 50'



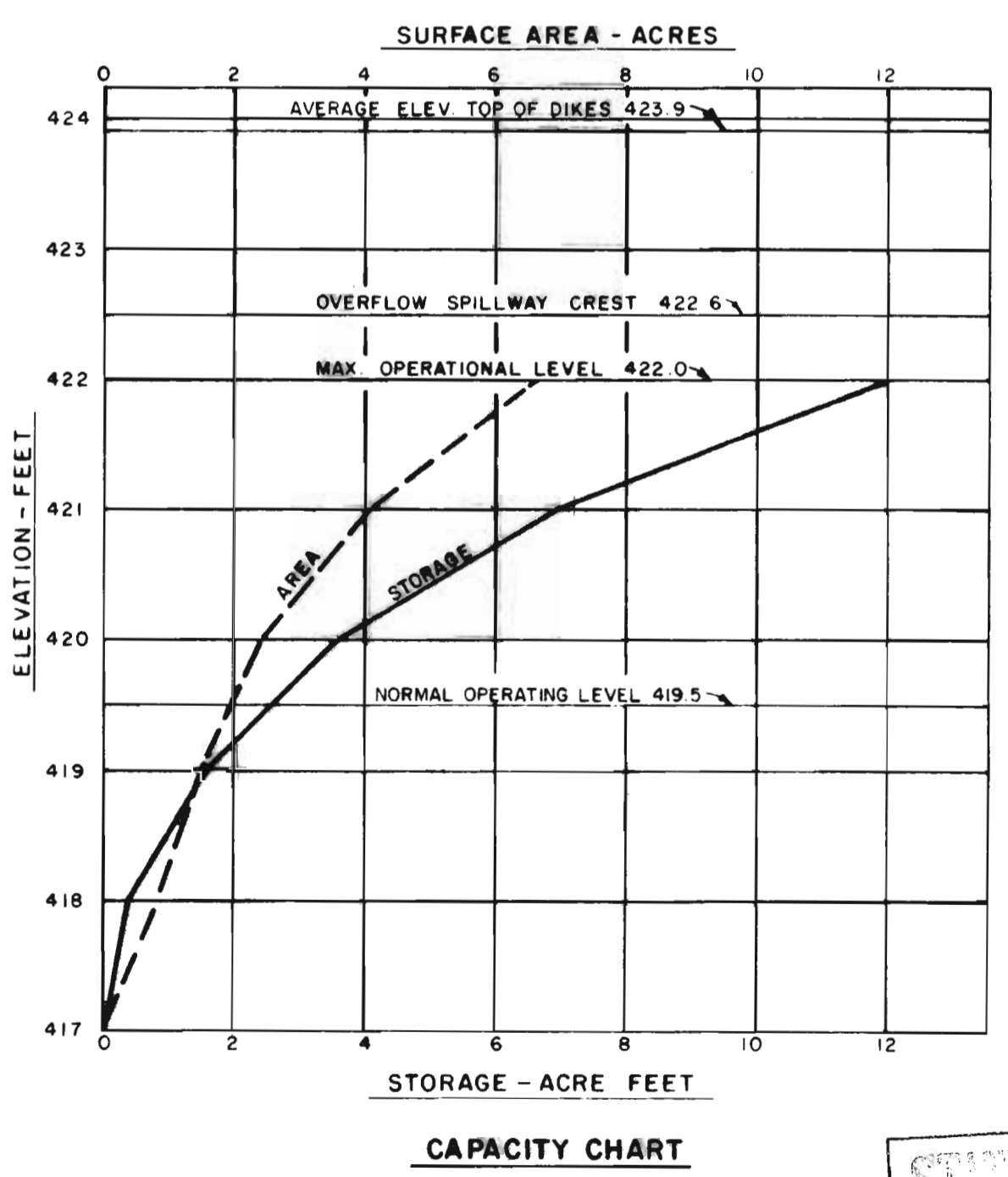
**SECTION A - TYPICAL DIKE SECTION**  
SCALE: 1" = 10' HORIZ & VERT

NOTE: ELEVATIONS SHOWN - U.S.G.S. DATUM

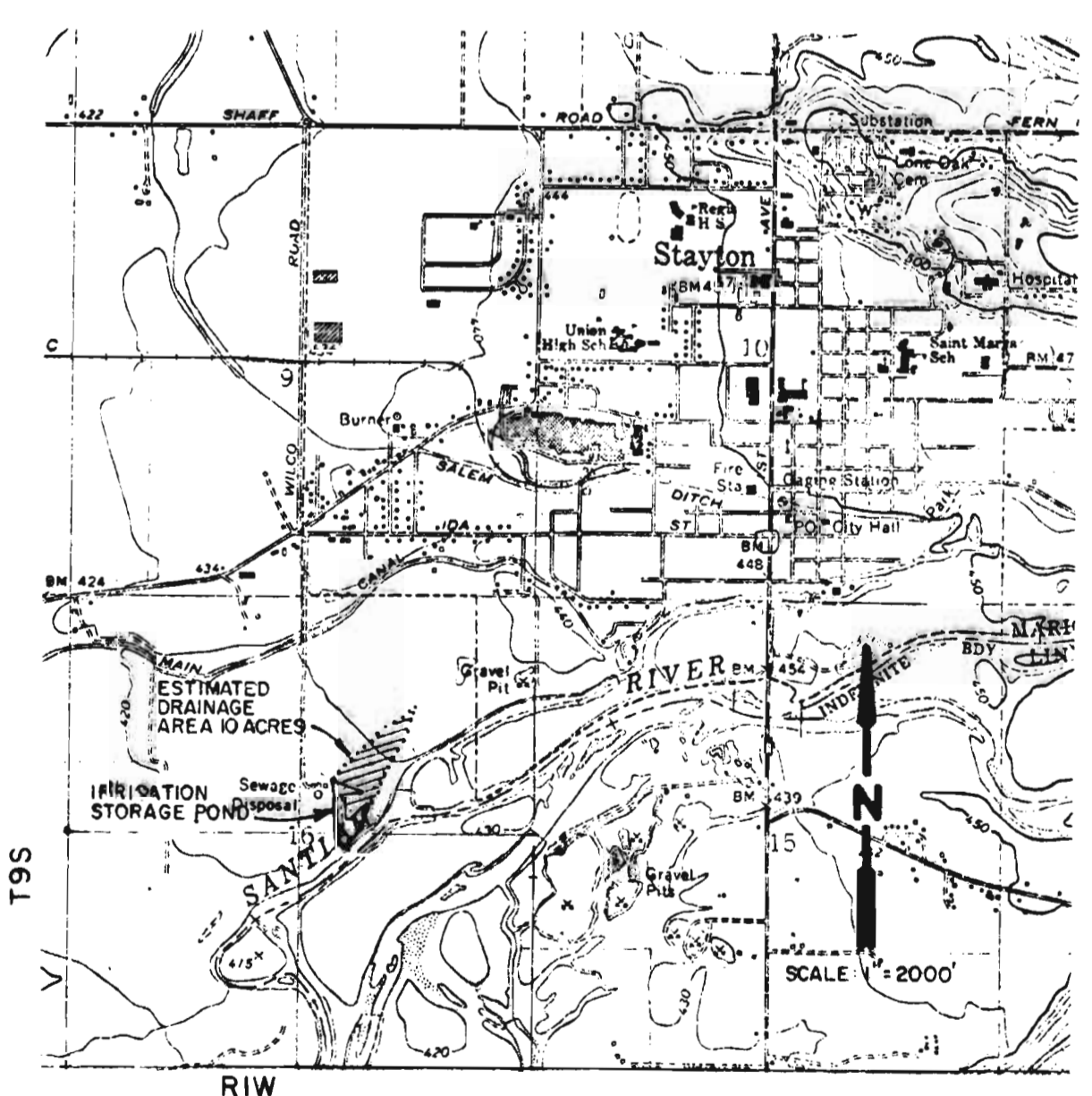


**SPILLWAY DETAILS**  
SCALE: 3/16" = 1'

RECEIVED  
MAY 30 1975  
STATE ENGINEER  
SALEM, OREGON



**CAPACITY CHART**



**VICINITY MAP**  
Application No. R-52838  
Permit No.

APPROVED: June 3, 1975  
*[Signature]*  
STATE ENGINEER

*[Signature]*  
OR. ENG.

STAYTON CANNING CO.		STAYTON, OREGON	
IRRIGATION STORAGE POND			
<b>CLARK &amp; GROFF ENGINEERS INC.</b> ENGINEERING ARTS BUILDING 3276 Commercial, S. E. SALEM, OREGON		SHEET OF 1	1
DSGN. W.C.L.	DRWG. P.I.W.	CHKD. <i>[Signature]</i>	SCALE AS NOTED
			DATE 5-75