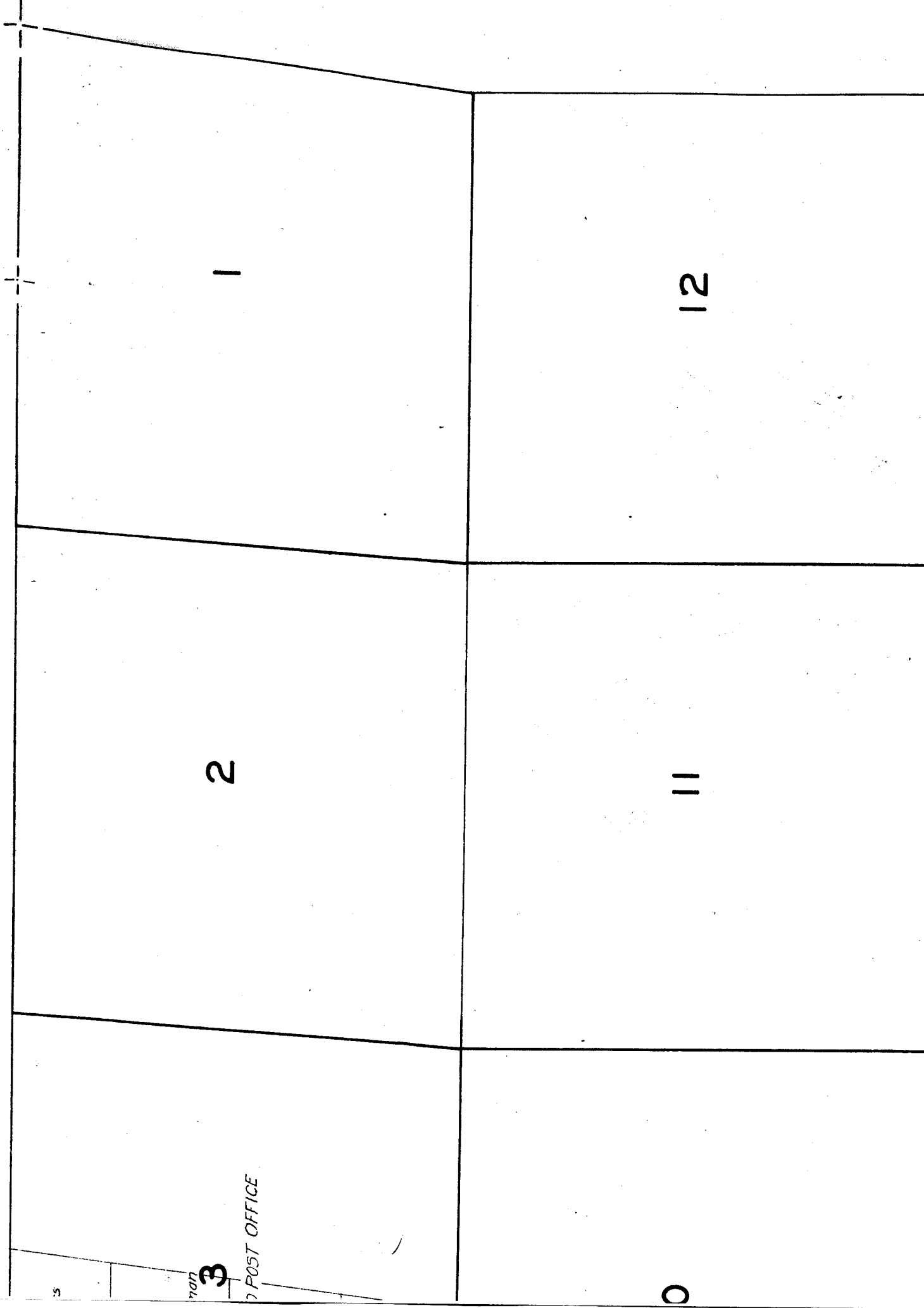


GE 19 E.

42-2-1



15

14

13

'16, 17, 18, 19, & 20, 1926.

2

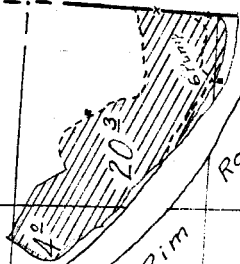
23

24

01  
2" Pipe

Sub-irrigated.

FT. Easter



4 1/2 Rim

Rock 0 3/4

Co. Supt)

Locution sketched from US Plots.

29

28

27

32

33

34

509<sup>e</sup> Pineville Land & Livestock Co  
James Scott (Supt)

Brush

509<sup>e</sup> Brush

and Junipers  
Rim Rock  
CREEK

MUDDY

9<sup>e</sup>

04

32

15

Flume

508<sup>e</sup>

15

201

Lot 4

0 10

17

16

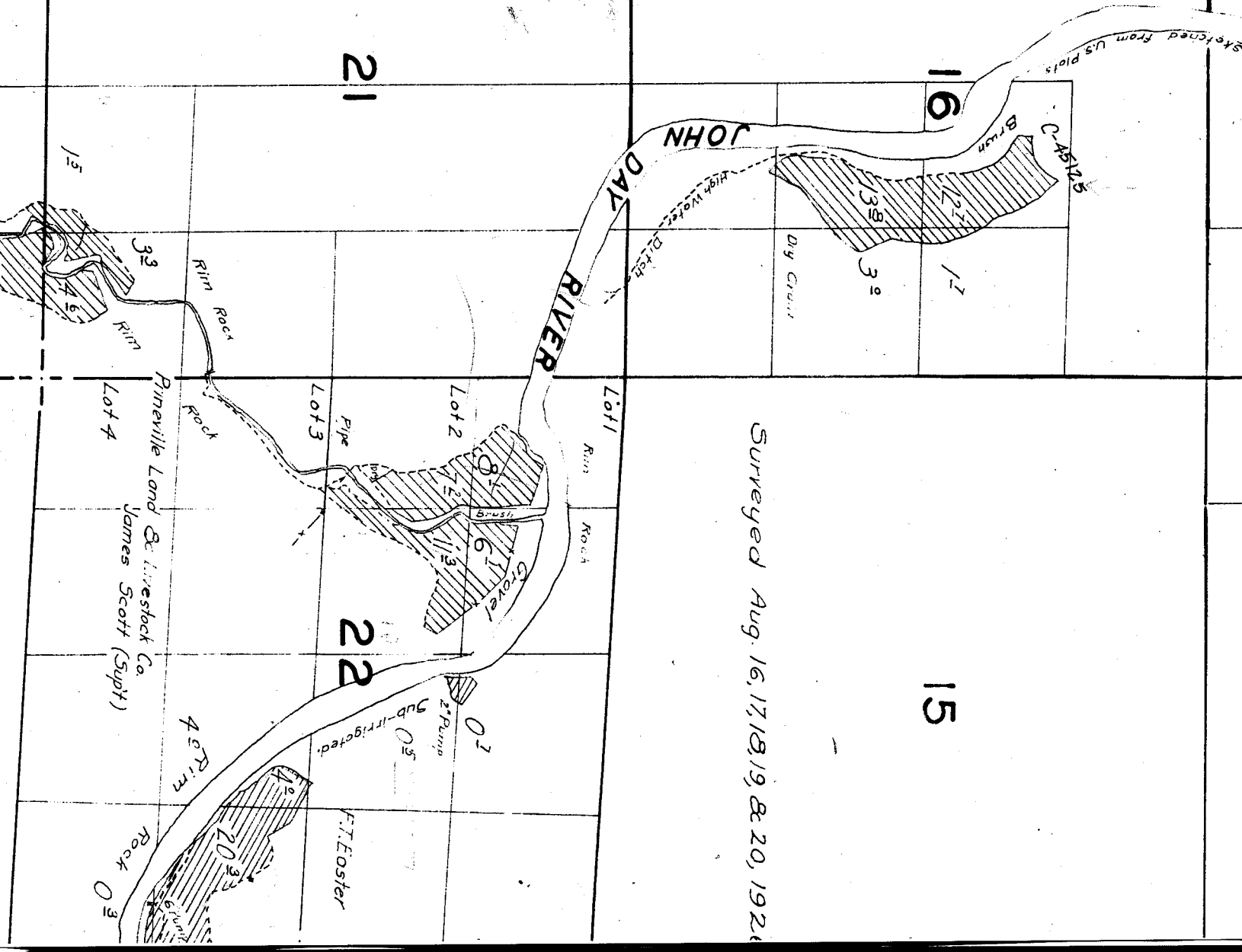
15

20

21

22

Surveyed Aug. 16, 17, 18, 19, & 20, 1924



23

24

*Location sketched from US Plots.*

C.S. Hicks  
Sub-irrigated  
Farm Land

26

Rim Rock

4°

Sage

Brush

25

0°

6' Pump

35

36

*Location sketched from U.S. Plots.*

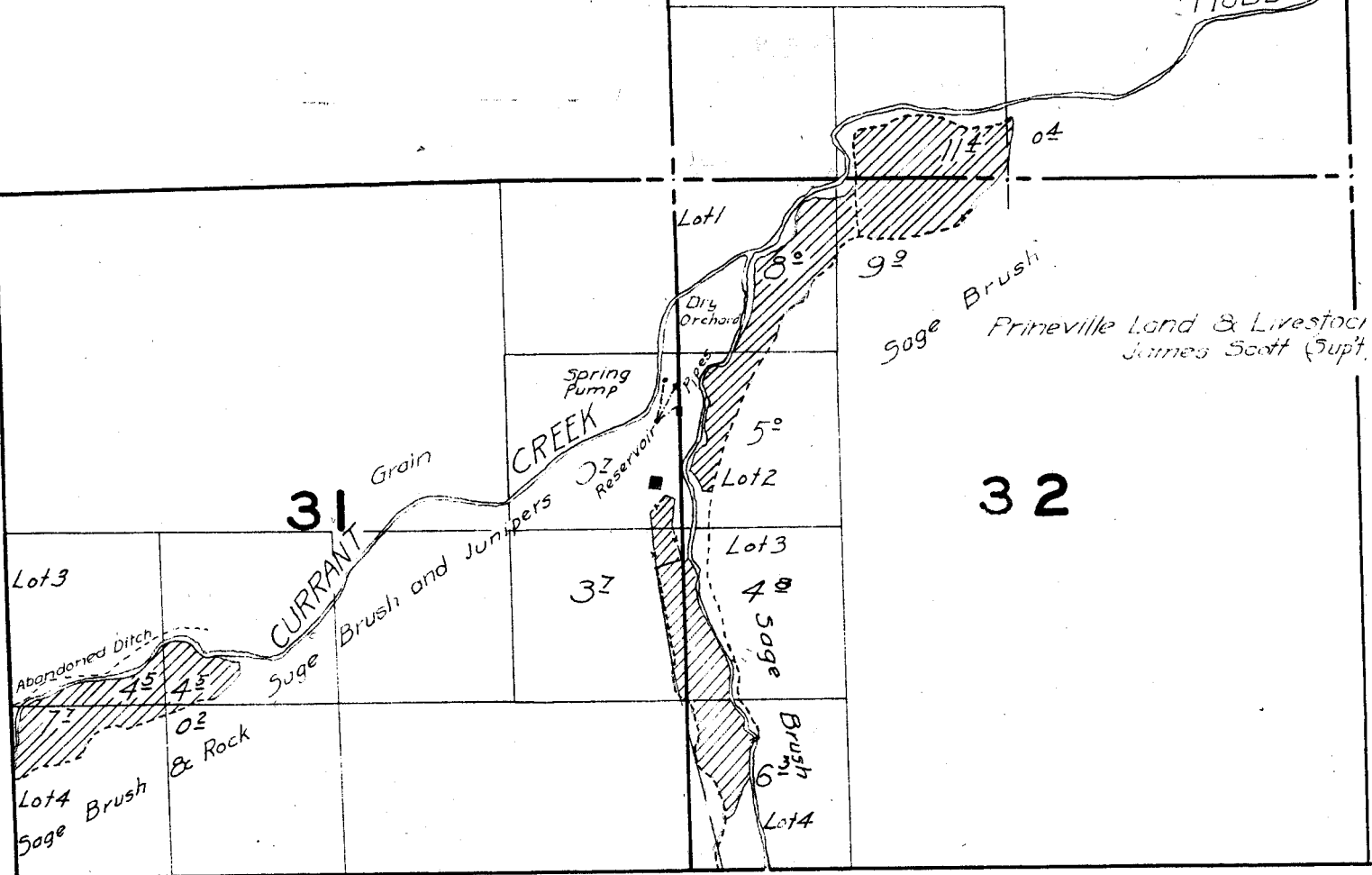
19

20

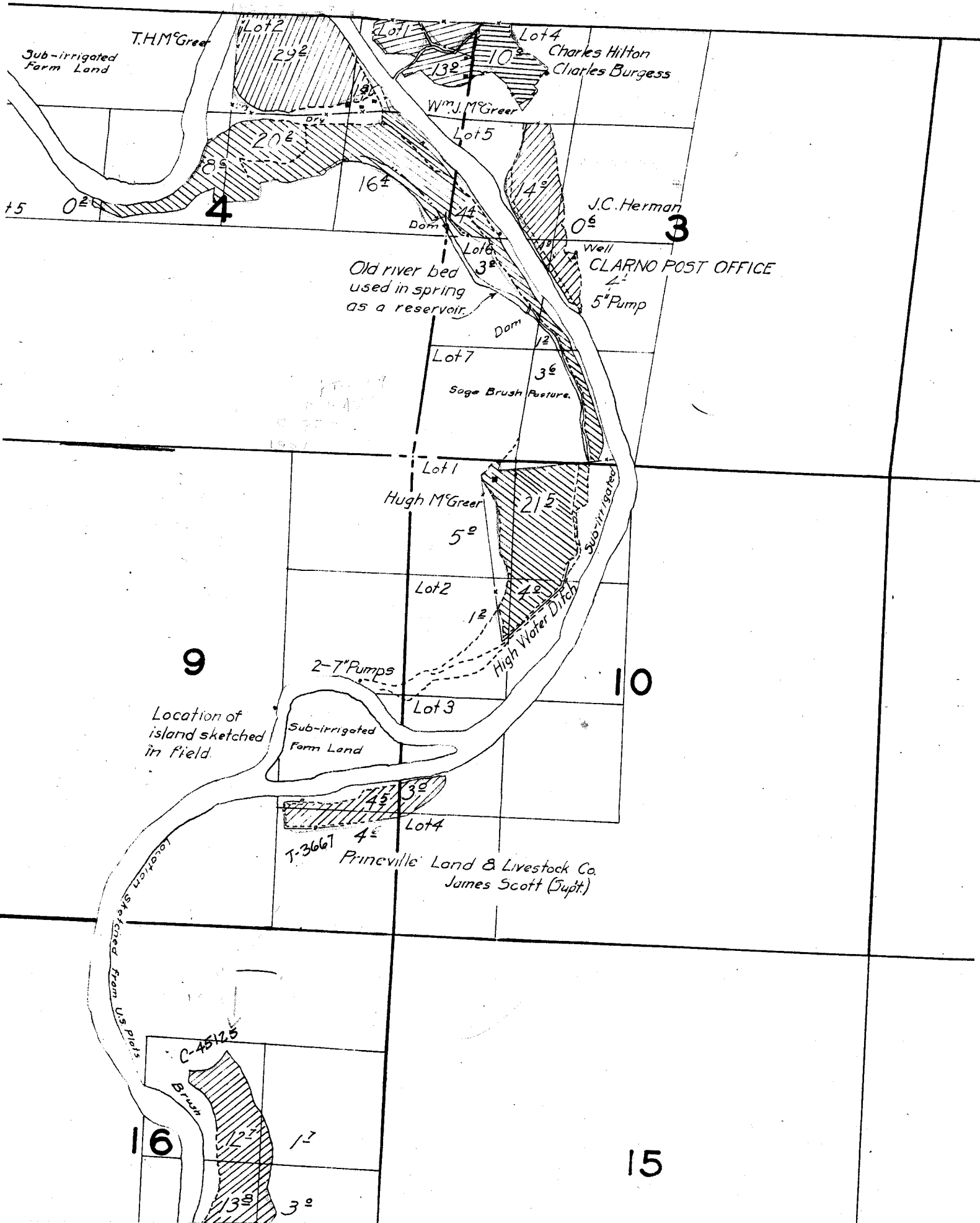
30

29

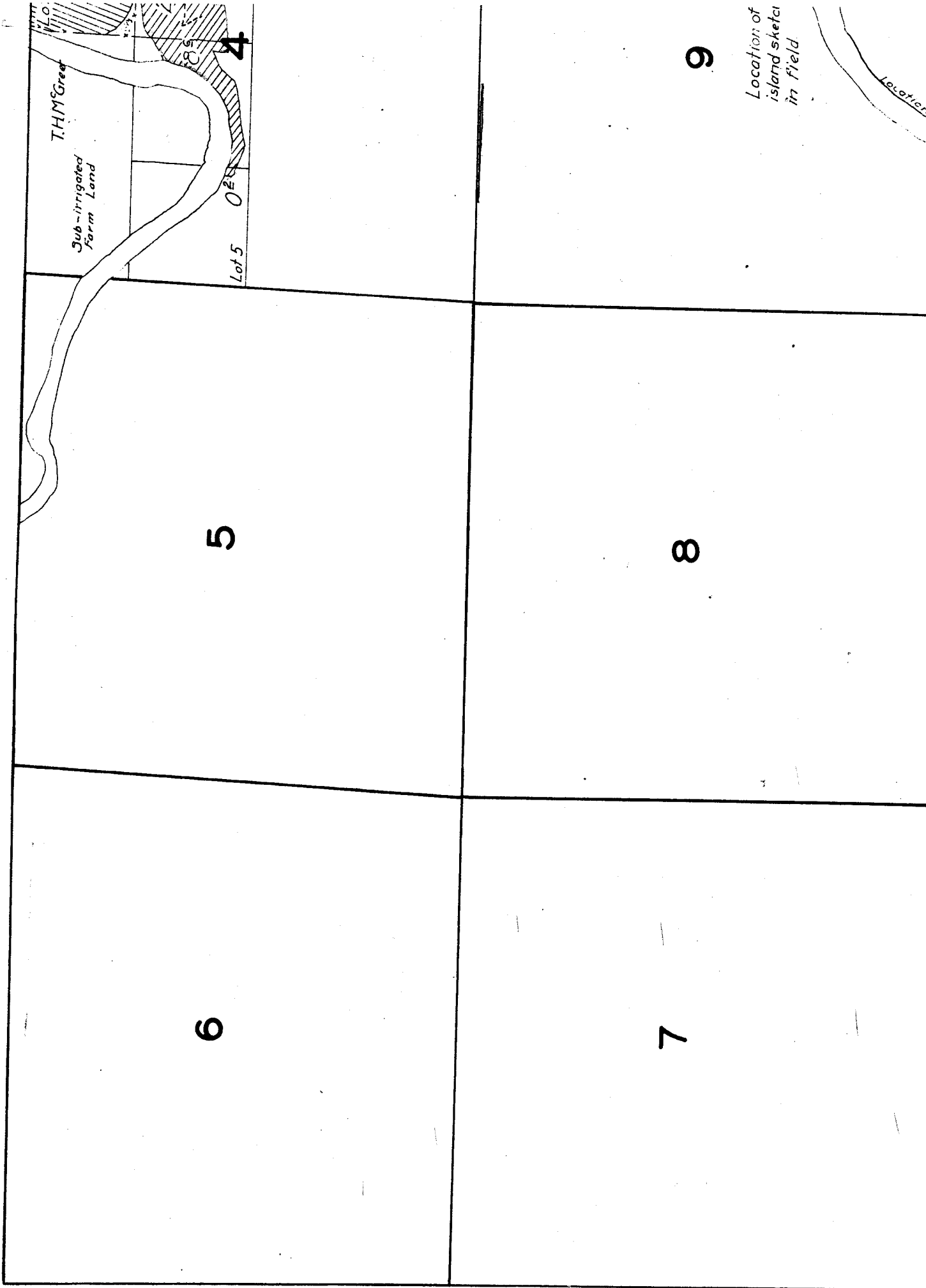
Sage Brush  
MUDDY



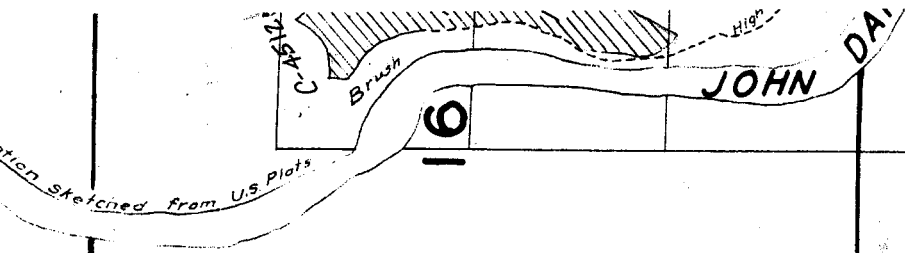
# TOWNSHIP 8 S. RANGE 19 E.



# TOWNS







16

21

17

20

18

19