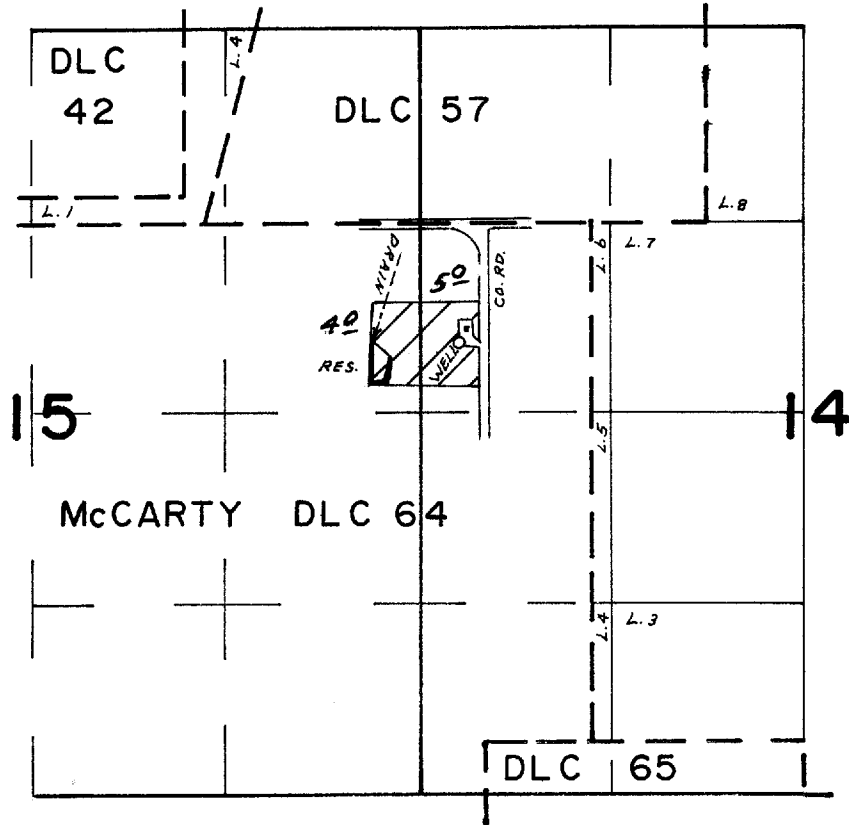


T.9S. R.4W. W.M.



RES. LOC. 1100'S & 1510'W, WELL LOC. 820'S & 900'W
 BOTH FROM NE COR. McCARTY DLC 64

FINAL PROOF SURVEY

UNDER

R-50196

R-6102

Application No. 50197 Permit No. 37695

G-6046

G-5722

IN NAME OF

GERALD L. MENTZER

Surveyed OCT. 17, 1975 by L.H. NUNN