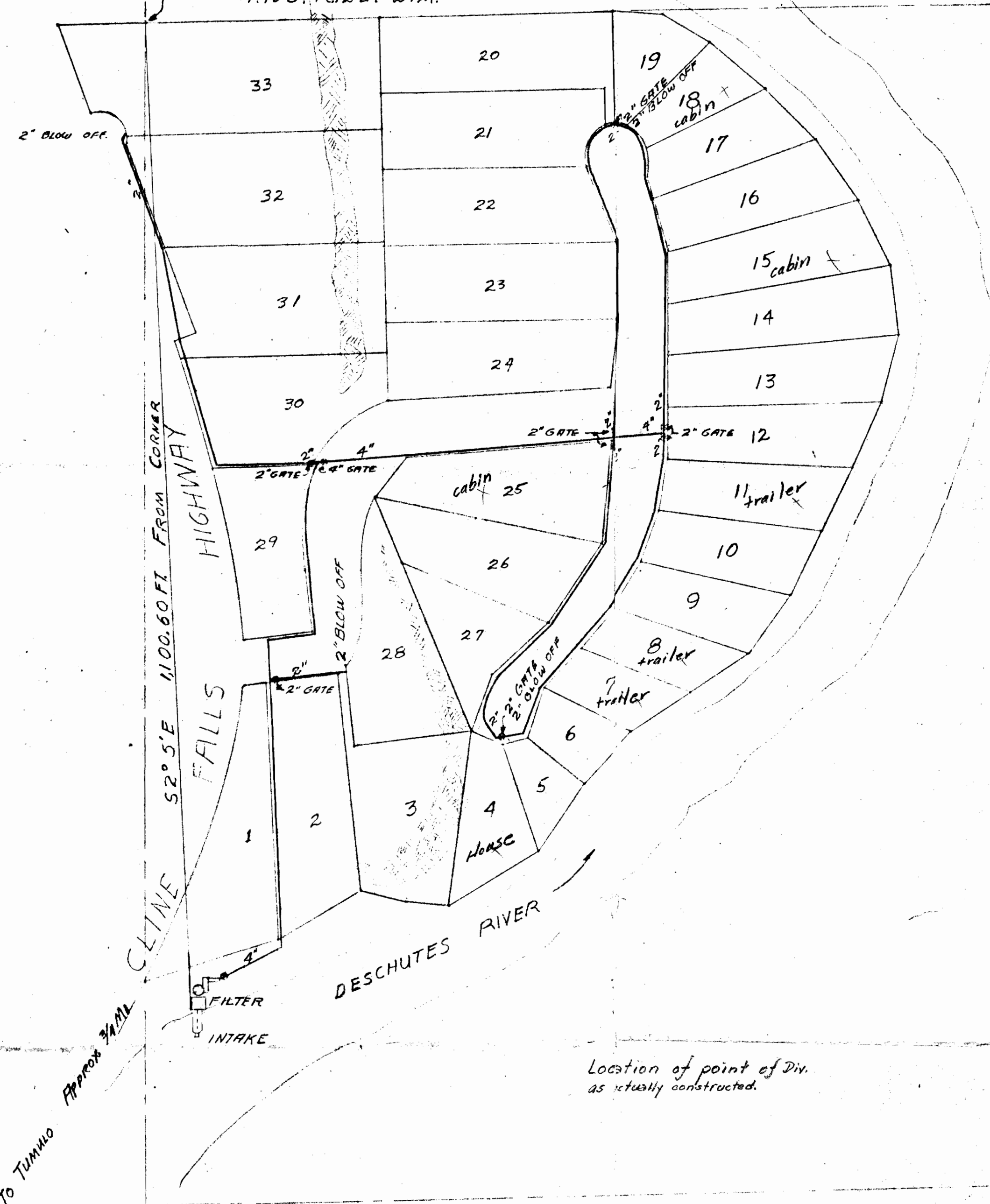


2' I.P. W. & COR. SECTION 29
T. 16 S. R. 12 E. W.M.



DESCHUTES RIVER HOMESITES RIMROCK ADDITION

Location of point of Div.
as actually constructed.

RECEIVED
JAN 6 1967
COUNTY ENGINEER
DEPT. OF TRANSPORTATION

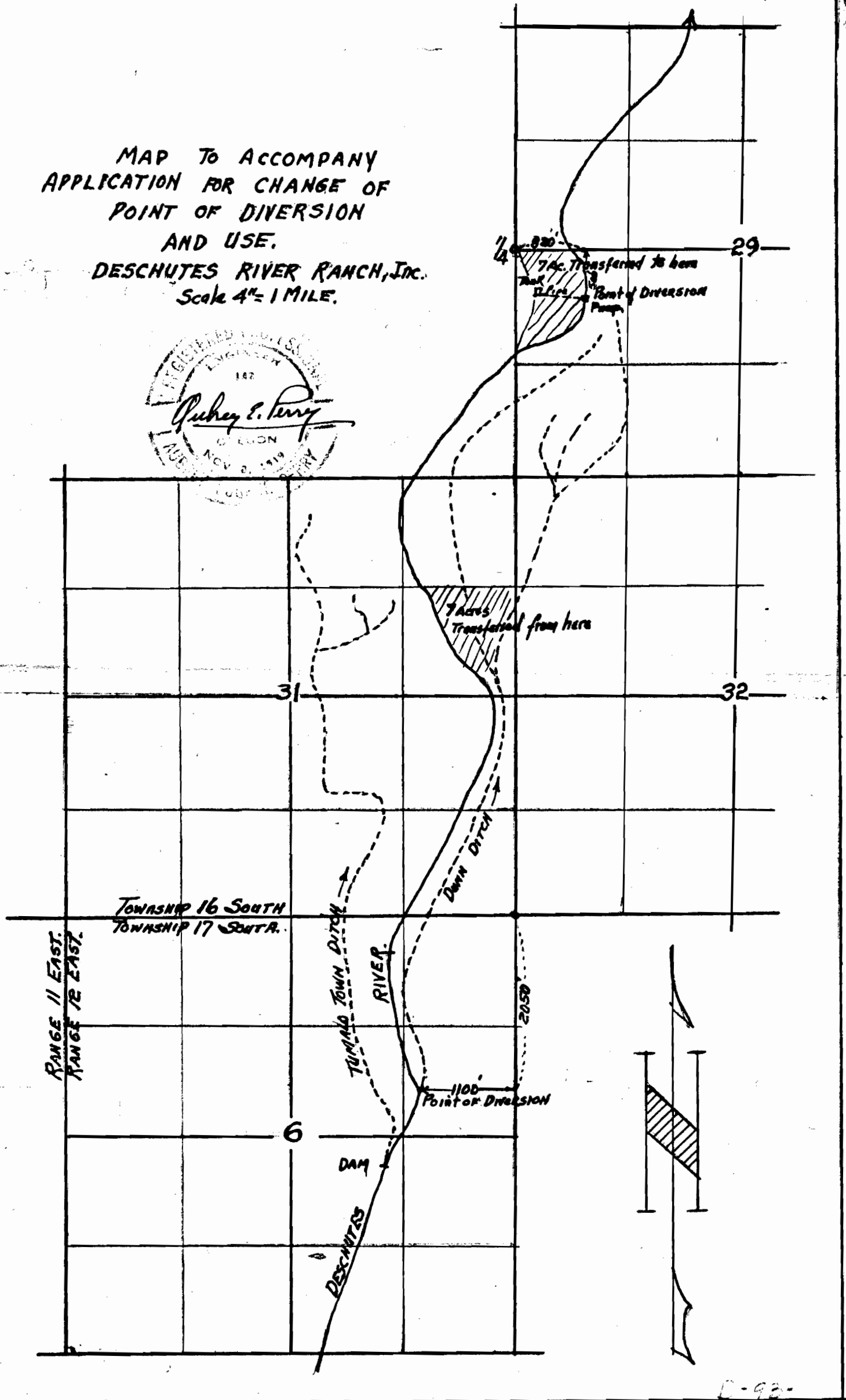


WATER SYSTEM FOR
RIMROCK ADDITION
GENERAL ARRANGEMENT
R. M. WADE & CO
SCALE 1"=100' 11-23-67
RD

DWG NO 10011

MAP TO ACCOMPANY
APPLICATION FOR CHANGE OF
POINT OF DIVERSION
AND USE.

DESCHUTES RIVER RANCH, INC.
Scale 4" = 1 MILE.



D-92-

Application No. 37827
Permit No.