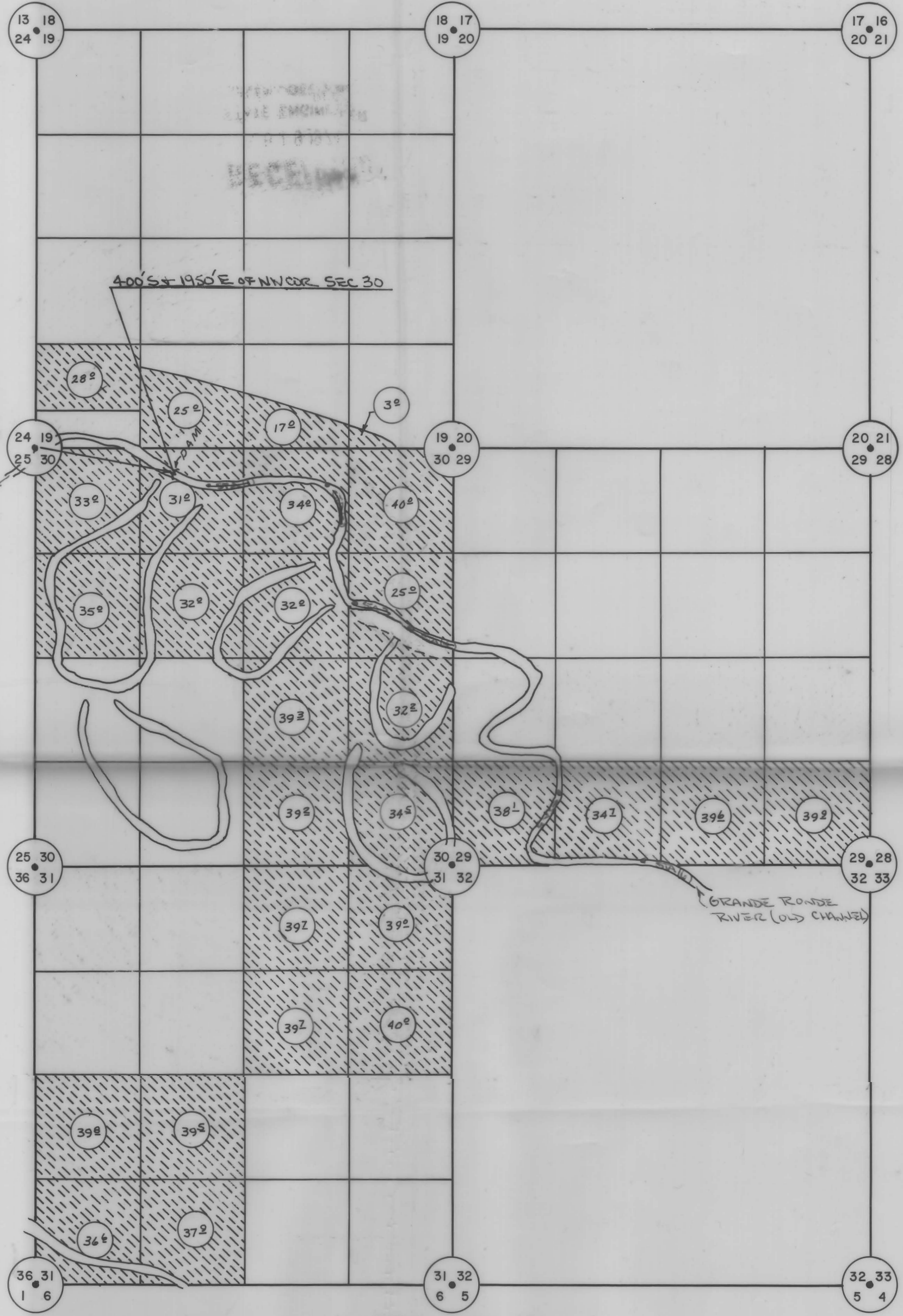


RECEIVED

RUSSELL W. ELMER

NOV 26 1973 APPROPRIATION OF WATER FROM ELMER RESERVOIR No. 4
STATE ENGINEER
SALEM, OREGON



SCALE: 1" = 1320'

RECEIVED

NOV 26 1973
STATE ENGINEER
SALEM, OREGON

LEGEND
SUPPLEMENTAL IRRIGATION

RECEIVED

FEB 19 1974
STATE ENGINEER
SALEM, OREGON

Application No. R-51499 + 51500
Permit No. R 6059 + 37330



SURVEYED FOR RUSSELL W. ELMER	
SURVEYED BY TELEK ENGINEERING, LA GRANDE	
SCALE: 1" = 1320'	DATE: November 19, 1973