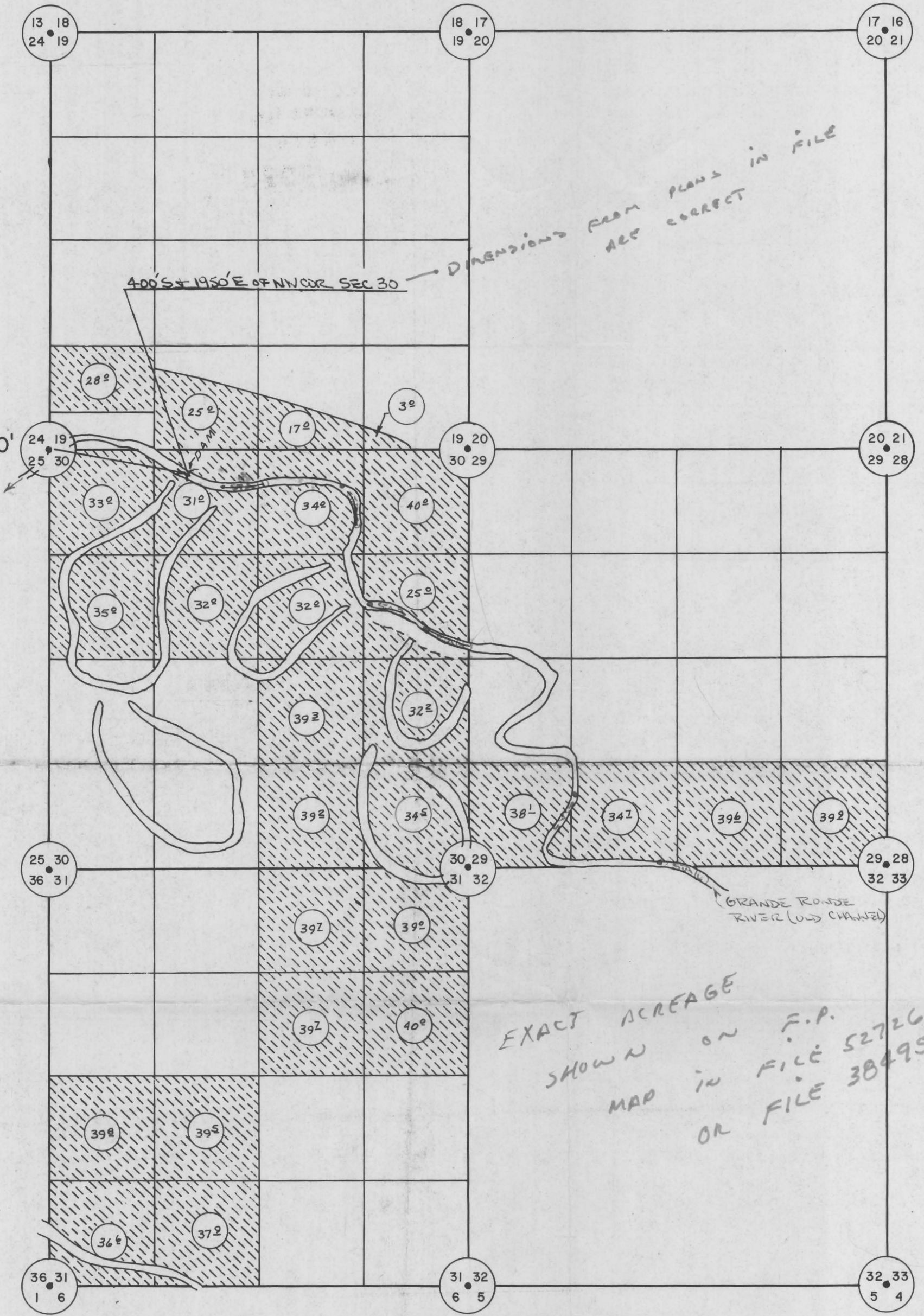


RUSSELL W. ELMER

APPROPRIATION OF WATER FROM ELMER RESERVOIR No. 4

RECEIVED
NOV 26 1973
STATE ENGINEER
SALEM, OREGON

SCALE: 1" = 1320'



DIMENSIONS FROM PLANS IN FILE ARE CORRECT

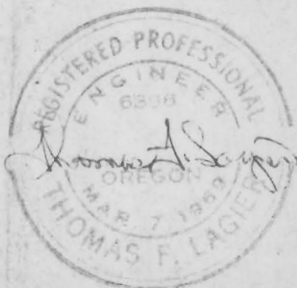
EXACT ACREAGE SHOWN ON F.P. MAP IN FILE 52726 OR FILE 38495

RECEIVED
NOV 26 1973
STATE ENGINEER
SALEM, OREGON

LEGEND
SUPPLEMENTAL IRRIGATION

RECEIVED
FEB 19 1974
STATE ENGINEER
SALEM, OREGON

Application No. R-51499 + 51500
Permit No. R6059 + 37330



SURVEYED FOR RUSSELL W. ELMER	
SURVEYED BY TELEK ENGINEERING, LA GRANDE	
SCALE: 1" = 1320'	DATE: November 19, 1973