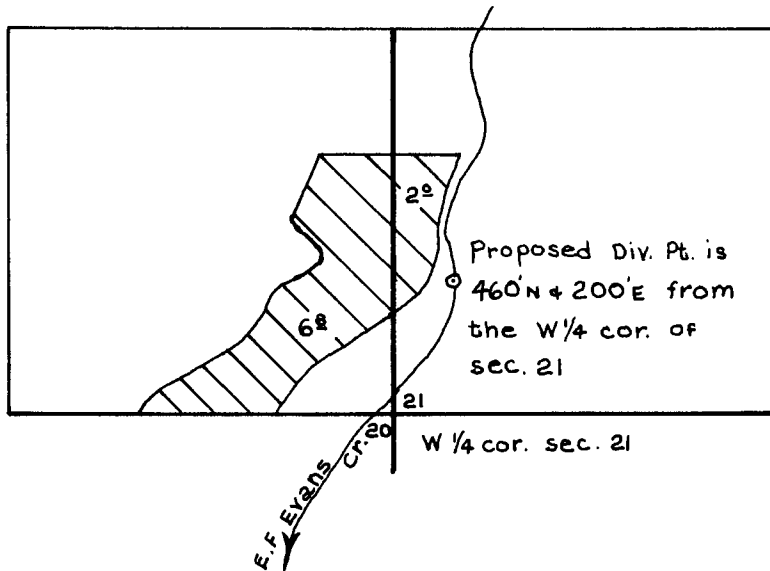


T.34S. R.2W.W.M.



Scale 8" = 1 Mile

Map for Duane G. Morrow for a C.I.P.O.D.

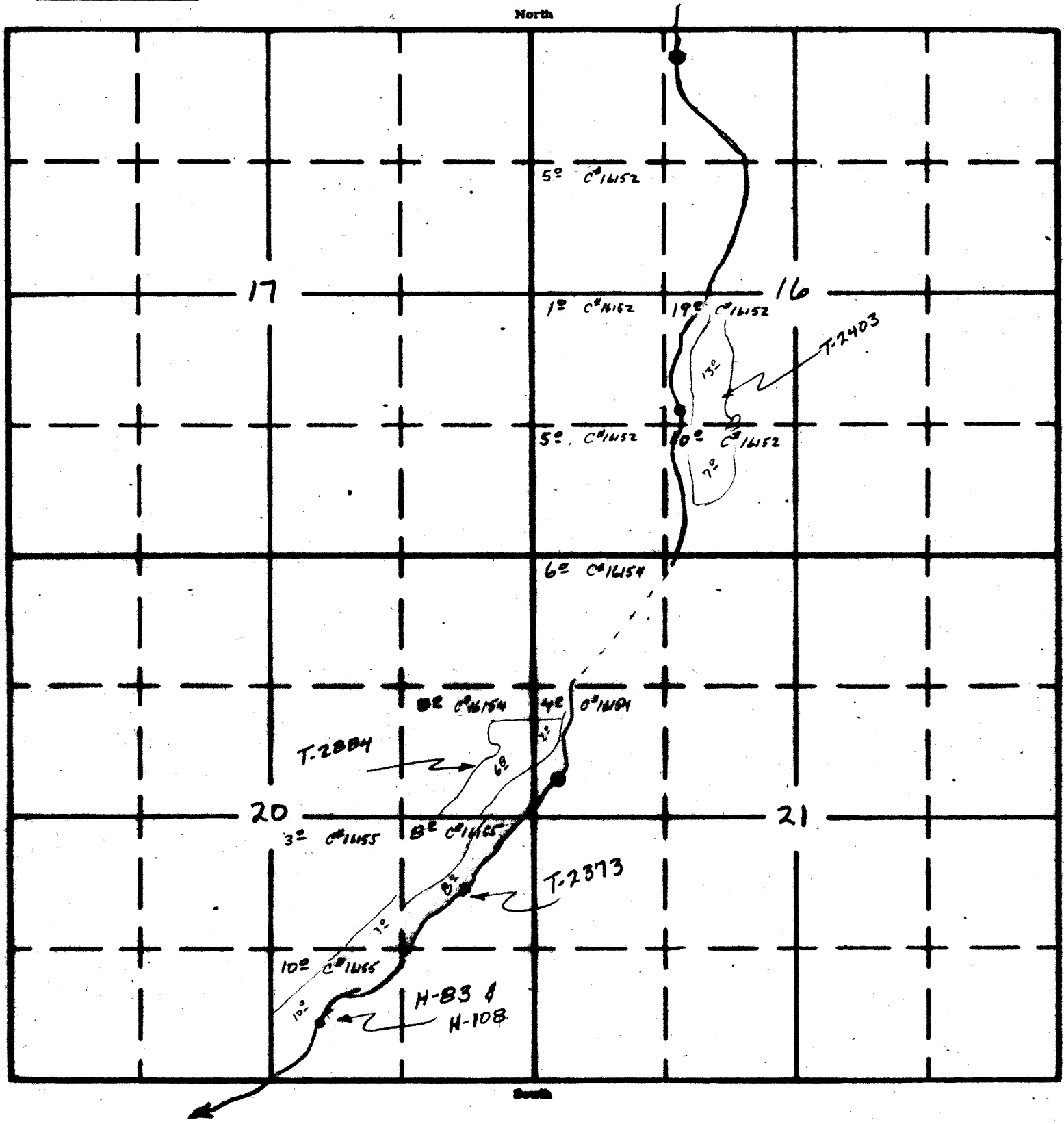


APPROVED  
 7-27-73

7-27-73

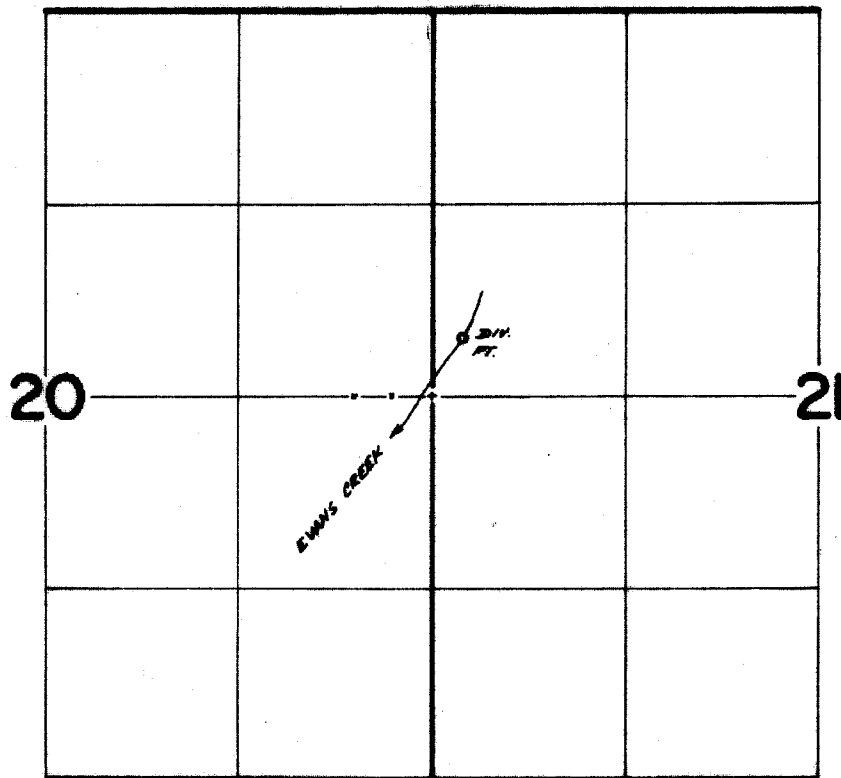
16
20
21

TOWNSHIP 34 S., RANGE 2 W., W. M.



Summary of Mayfield ditch rights from East Fork Evans Creek

T.34S., R.2W., W.M.



D.V. PT. LOC: 400' N & 200' E FROM W 1/4 COR. SEC. 21

**FINAL PROOF SURVEY**  
UNDER

Transfer No. 2884  
Application No. .... Permit No. ....  
IN NAME OF

**CHARLES L. AND WILDA D. MOORE**

Surveyed Aug. 25, 1975, by D. Norby