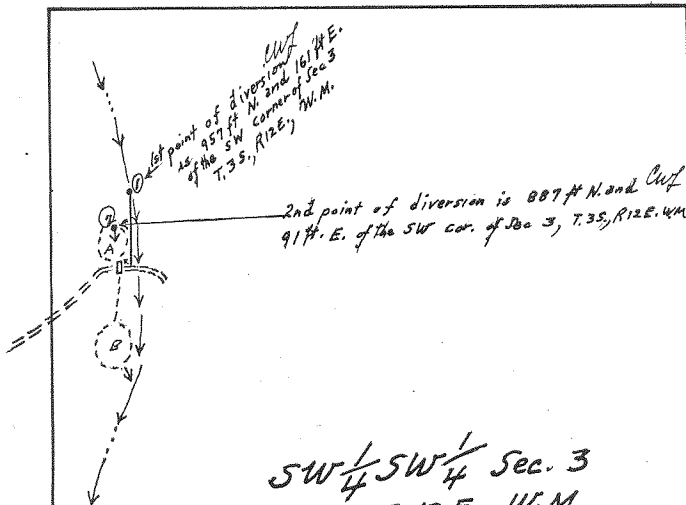


Symbols

- ① Main Schindler Spring, location surveyed
- ② Second " " , approx. 100' S.W. of ① *W.M.*
- Pipeline (South end will be positioned so overflow will go in to ①)
- Culvert under road
- ⊙ A ⊙ B Small impoundment areas for stockwater



SW  $\frac{1}{4}$  SW  $\frac{1}{4}$  Sec. 3  
 T. 35., R. 12 E. W.M.

RECEIVED  
 FEB 5 1971  
 STATE ENGINEER  
 SALEM, OREGON

403  
 90/10

Application No. 47330  
 47331  
 Permit No. 35456  
 35457