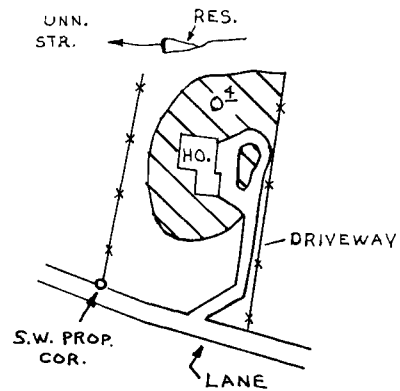


T.1S.R.9W.W.M.

N.E.1/4 N.E.1/4 SEC.7



DIV. LOC. - 600' S. & 380' W. FROM N.E. COR. N.E. 1/4 N.E. 1/4 SEC. 7

SCALE: 1" = 200'
FINAL PROOF SURVEY
UNDER

R-50816

R-6000

Application No. 50702. Permit No. 36957.
IN NAME OF

.....**GEORGE DANFORTH**.....

Surveyed July 29 1976, by R.G. Mucken