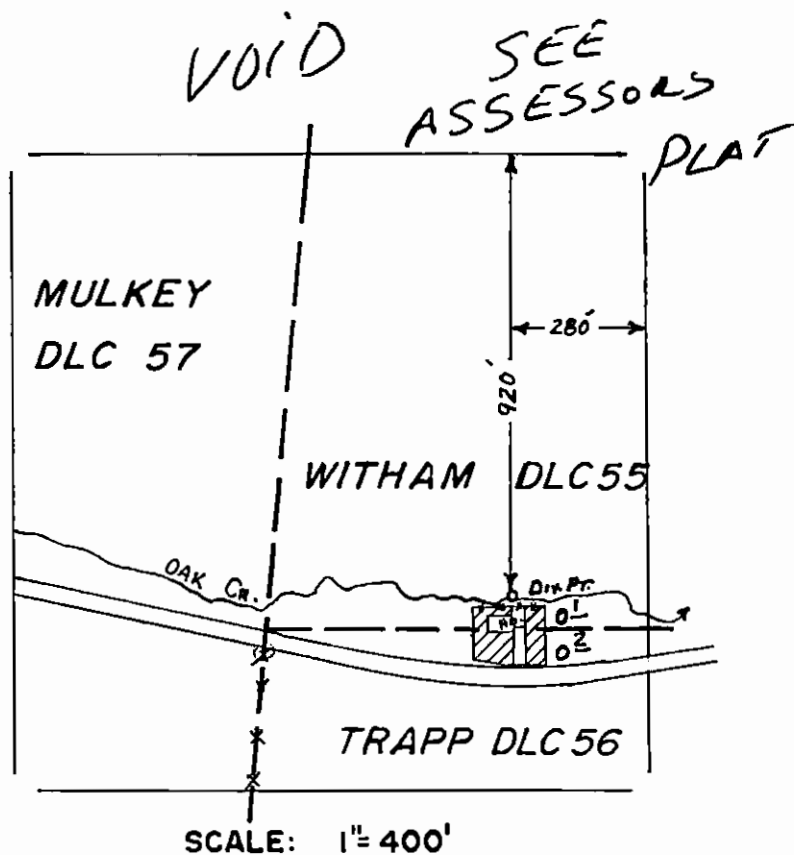


# T.11S., R.5W., W.M.

SE 1/4 NE 1/4 SECTION 32



## FINAL PROOF SURVEY UNDER

Application No. 54421... Permit No. 40809...  
IN NAME OF

.....ELMER H. & GAY L. GALLOWAY

Surveyed Aug..17.. 1977, by R.F. BARWIN...

F.P. MAP.  
APPL. 54421

T11S R 5W

1" = 200'

9-02

SEE MAP II 5 33

SEE COUNTY SURVEY 3396

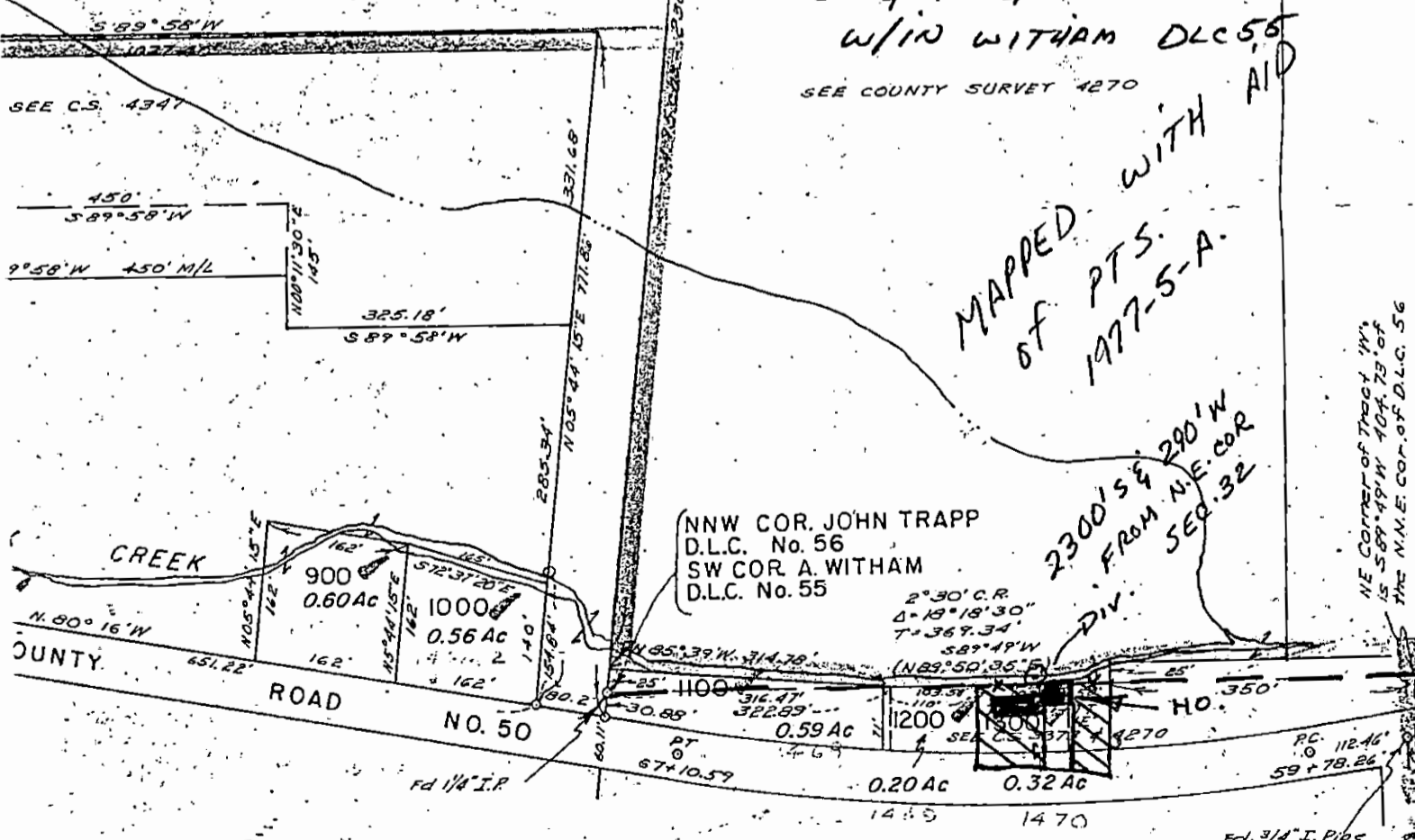
SE 1/4 NE 1/4  
w/in WITHAM DLC 56  
SEE COUNTY SURVEY 4270

MAPPED WITH AID  
OF PTS.  
1977-5-A.

NNW COR. JOHN TRAPP  
D.L.C. No. 56  
SW COR. A. WITHAM  
D.L.C. No. 55

2300' S + 290' W  
FROM N.E. COR  
SEC. 32

NE CORNER OF TRACY 1/4  
15 S 89° 49' W 104.73' OF  
THE N.E. COR. OF D.L.C. 56



SEE MAP II 5 32 D

w/in TRAPP  
DLC 56