

FLOOD WA

John G. S.

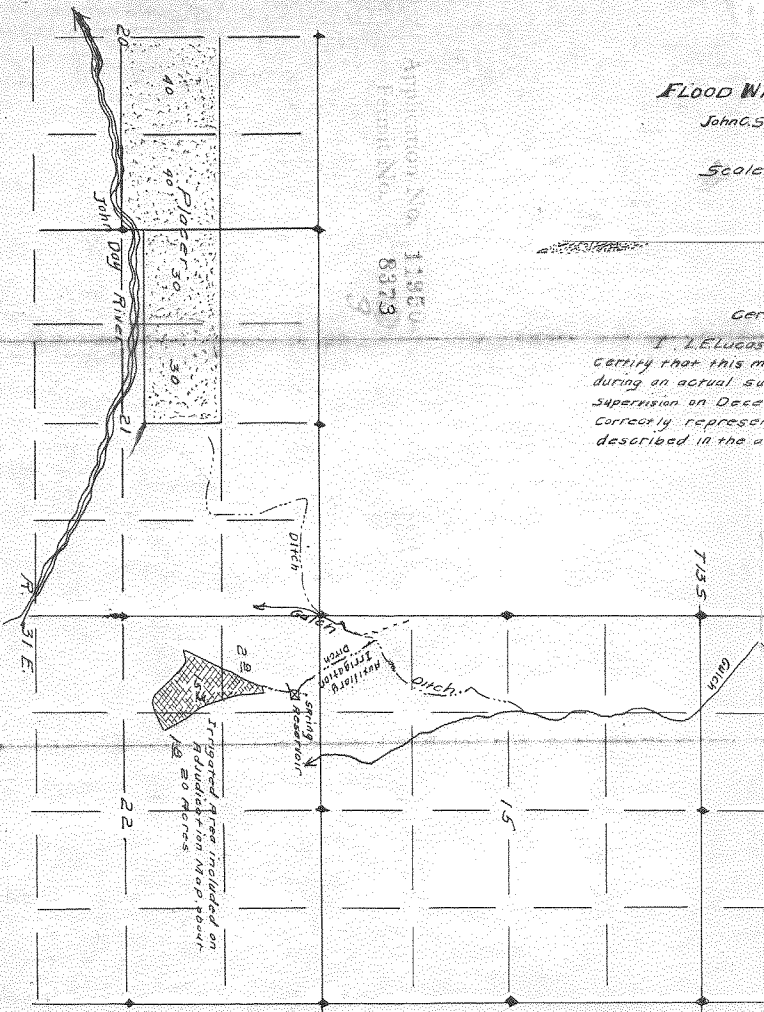
Scale

Gen

T. E. Lucas

certify that this map was prepared during an actual survey under my supervision on December 1, 1900. It correctly represents the land described in the act

SECTION No. 11850  
T. 135 N.  
R. 31 E.  
8379



29  
5.3  
Irrigated Area included on Re-division Map 1900  
20 Acres

Spring  
Acquisition  
Irrigation Ditch

Ditch

Ditch

T. 135 N.

R. 31 E.

22

15

20

John Day River

Placer

40

40

30

30

21

Map of  
**FLOOD WATER DITCH**

John C. Silvers Estate  
Appropriator

Scale 4 in. = 1 mile



*Certificate of Surveyor*

I, E. Lucas, of John Day, Oregon, do hereby certify that this map was made from notes taken during an actual survey made under my immediate supervision on December 3-4, 1927, and that it correctly represents the location of the works described in the accompanying application.

*E. Lucas*  
County Engineer  
No. 304.

