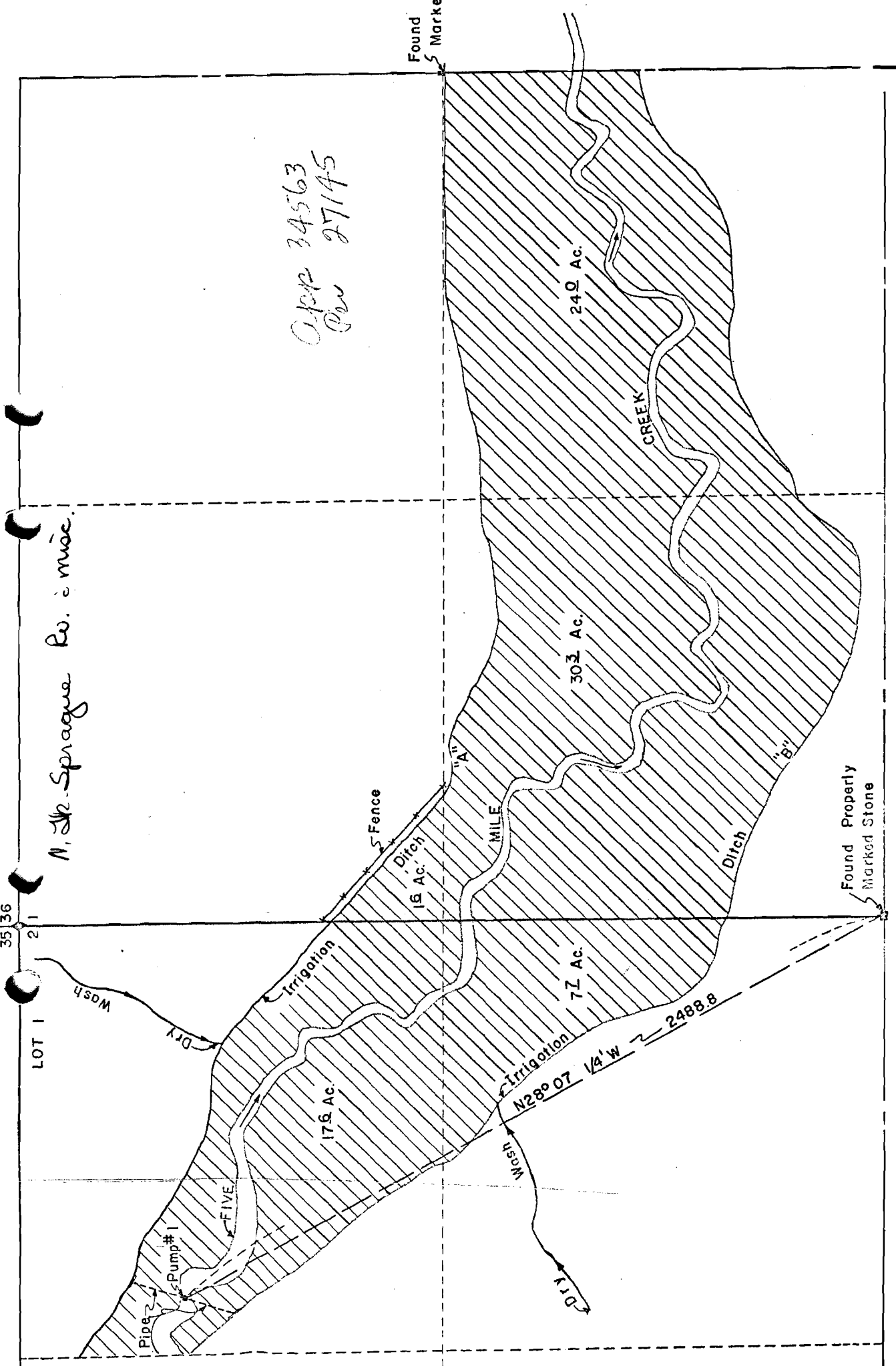


27145
30971
45138
47296



N. Sprague Co. in misc.

Aper 34563
Per 27145

LOT 1

35 36
21

WASH

DRY

Pipe
Pump # 1

FIVE

176 AC.

Irrigation

Fence

Ditch

15 AC.

"A"

MILE

77 AC.

Irrigation

N28°07' 1/4' W

2488.8

303 AC.

Ditch

"B"

249 AC.

CREEK

Found Property
Marked Stone

Found Marke

SECTIONS 1 & 2 T.36S., R.13E., W.M.