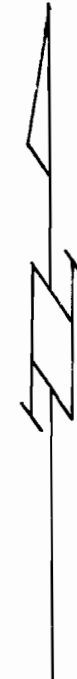
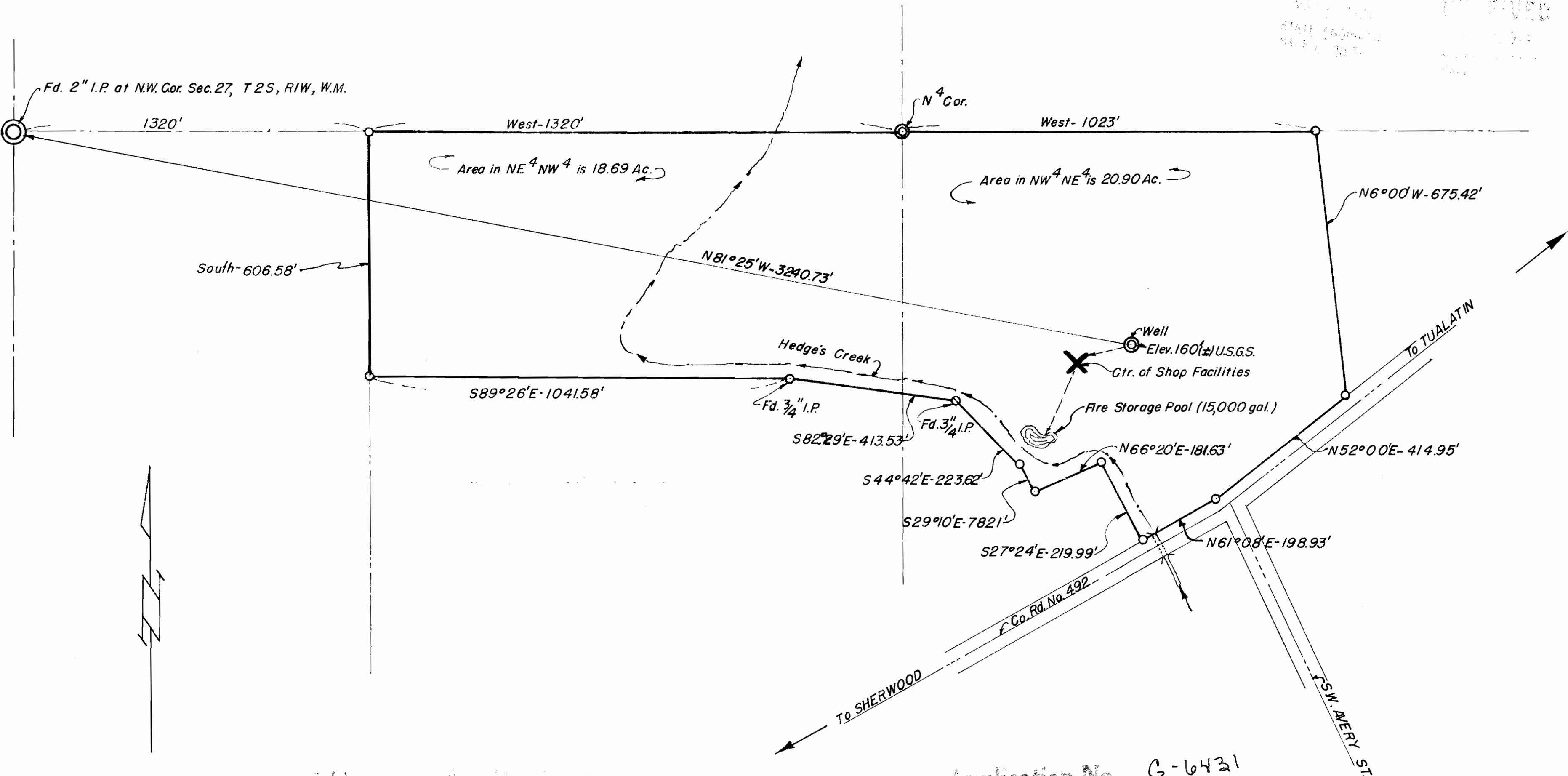


RECEIVED  
 STATE ENGINEER  
 DIVISION  
 WATER RIGHTS  
 DIVISION



Application No. G-6431  
 Permit No. G 6025

WELL PLAT FOR WATER PERMIT  
 for  
 DRAKE INVESTMENT COMPANY

Date: 2-9-74 Scale: 1"=200' J. R. Gray

