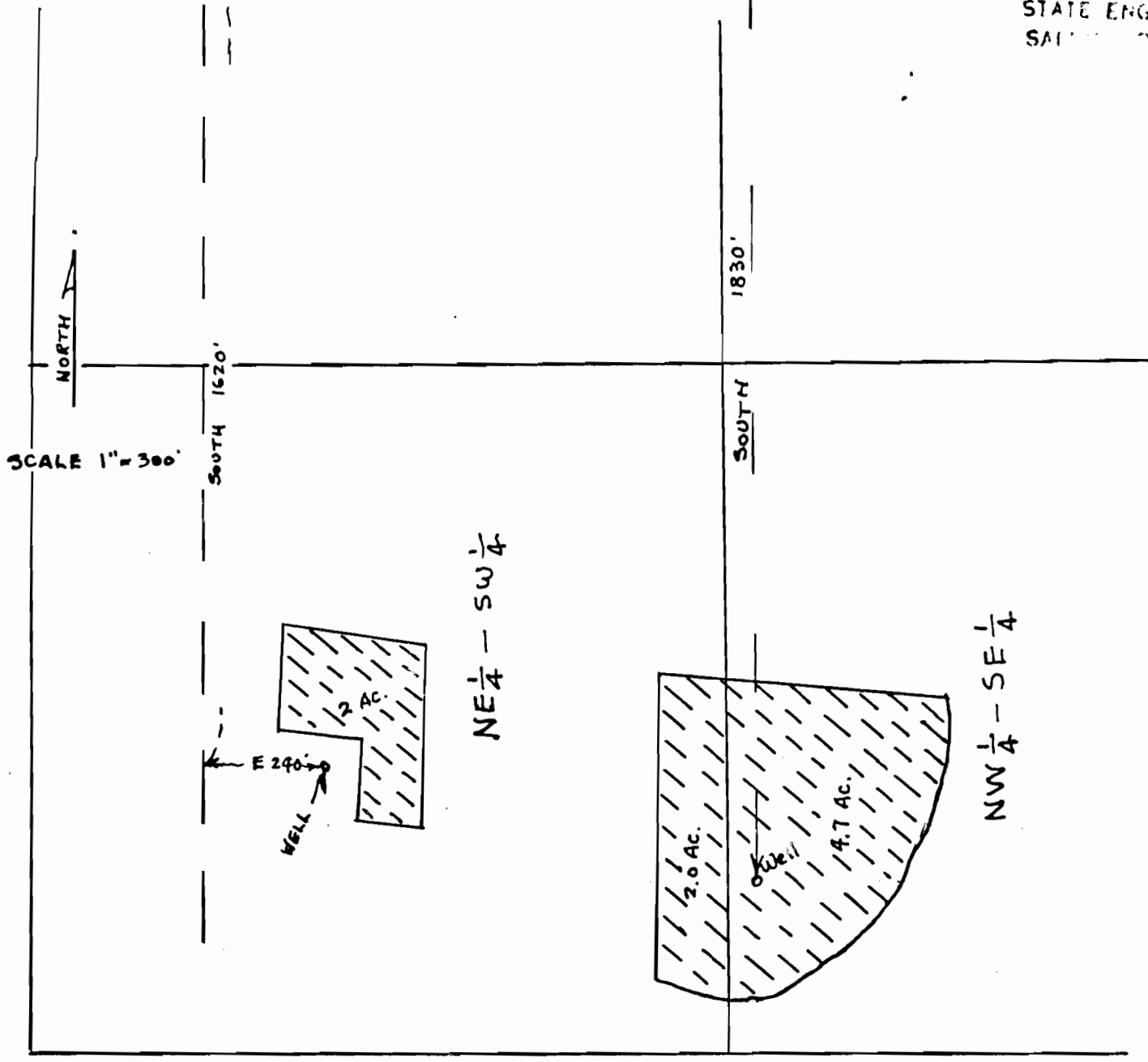


N.W. cor. Darlin Smith D.L.G

EAST 1050'

RECEIVED  
MAY 15 1975  
STATE ENGINEER  
SALMON REGION



WATER APPLICATION MAP  
CLAUD E. ENGEL  
3/31/75

SEC. 24, T4S, R4W, W.M.

Application No. G-6206 & G-6807  
Permit No. G 6311 & G-6312