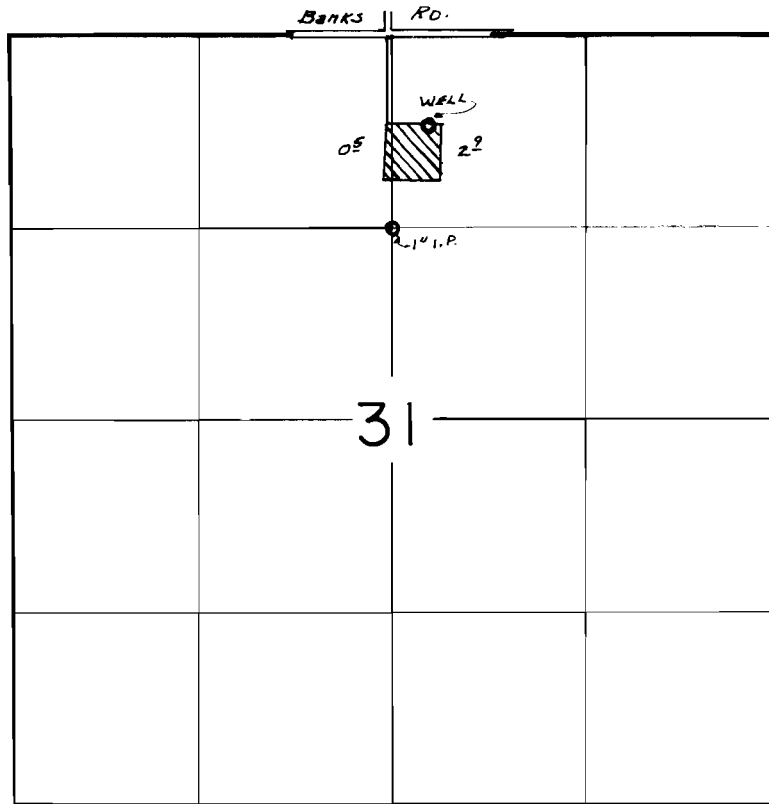


T 2N., R 3W., W. M.



Well Loc. 730' N. & 250' E. from the SW Cor., NW 1/4 NE 1/4, Sec. 31

FINAL PROOF SURVEY
UNDER

Application No. G-7241. Permit No. G-6646
IN NAME OF

UNION POINT CEMETERY ASSOCIATION

Surveyed OCT-7 1977, by S.C. BROWN