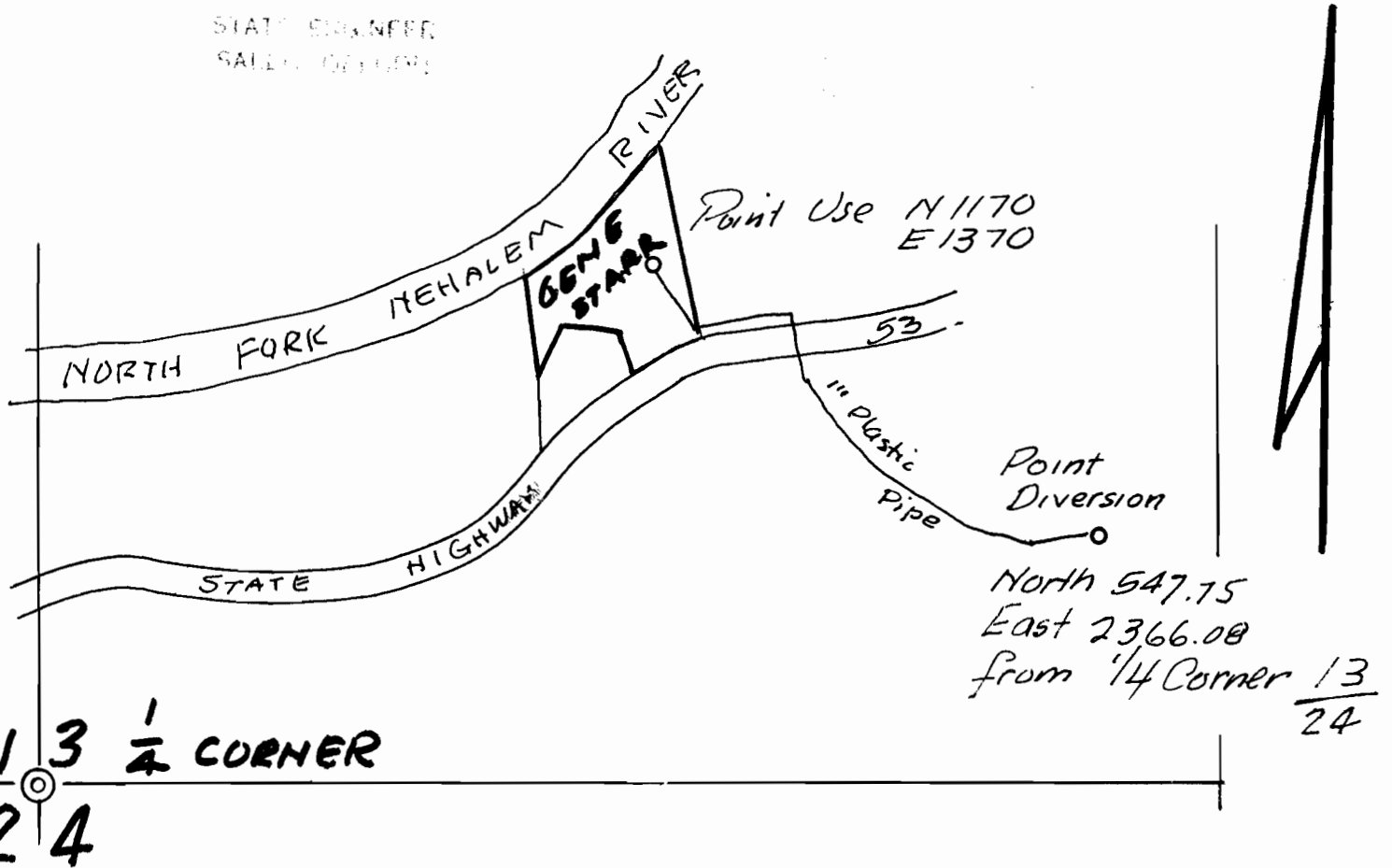


**WATER RIGHT GENE R. STARR, NEHALEM, ORE.
SEC 13, T3N, R10W. SCALE 1"=400'**

RECEIVED

NOV 13 1974
STATE ENGINEER
SALMON DIVISION



ENGINEER'S CERTIFICATE:

I, W.A. Markham, of Arch Cape, Oregon, hereby certify that this map is made from notes of an actual survey made by me on October 3, 1973.

W.A. Markham



Application No. 51484
Permit No. 38859