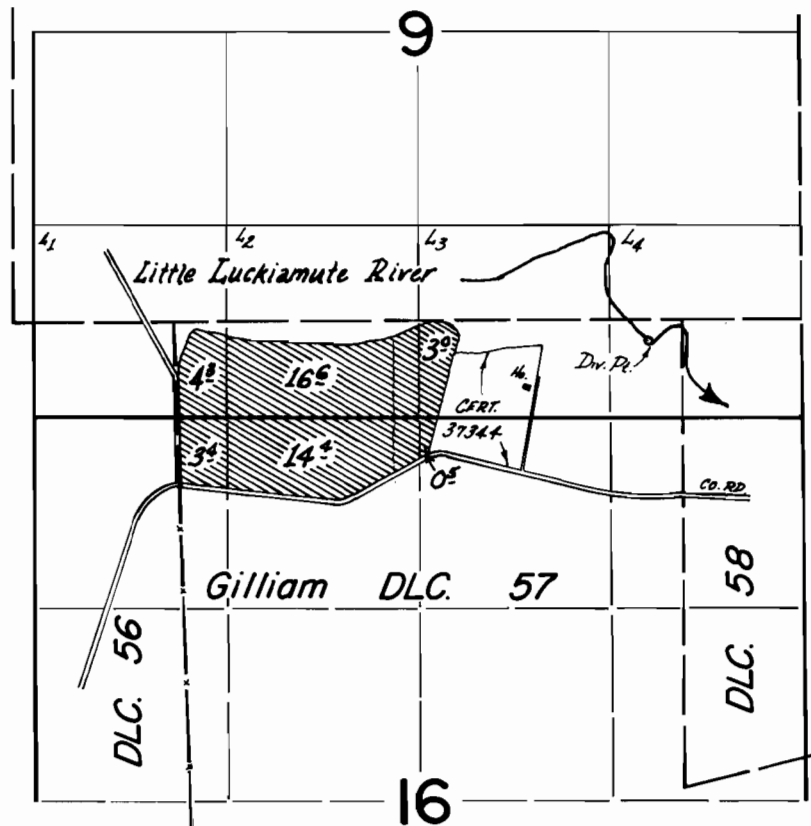


T.9S.,R.5W.,W.M.



Div. Pt. loc: 150 ft. S + 230 ft. W. from NE cor. Gilliam DLC. 57.

FINAL PROOF SURVEY
UNDER

Application No. 51982... Permit No. 39091...
IN NAME OF

LEE GILLINS

Surveyed July 5, 1977, by I.M. Toll