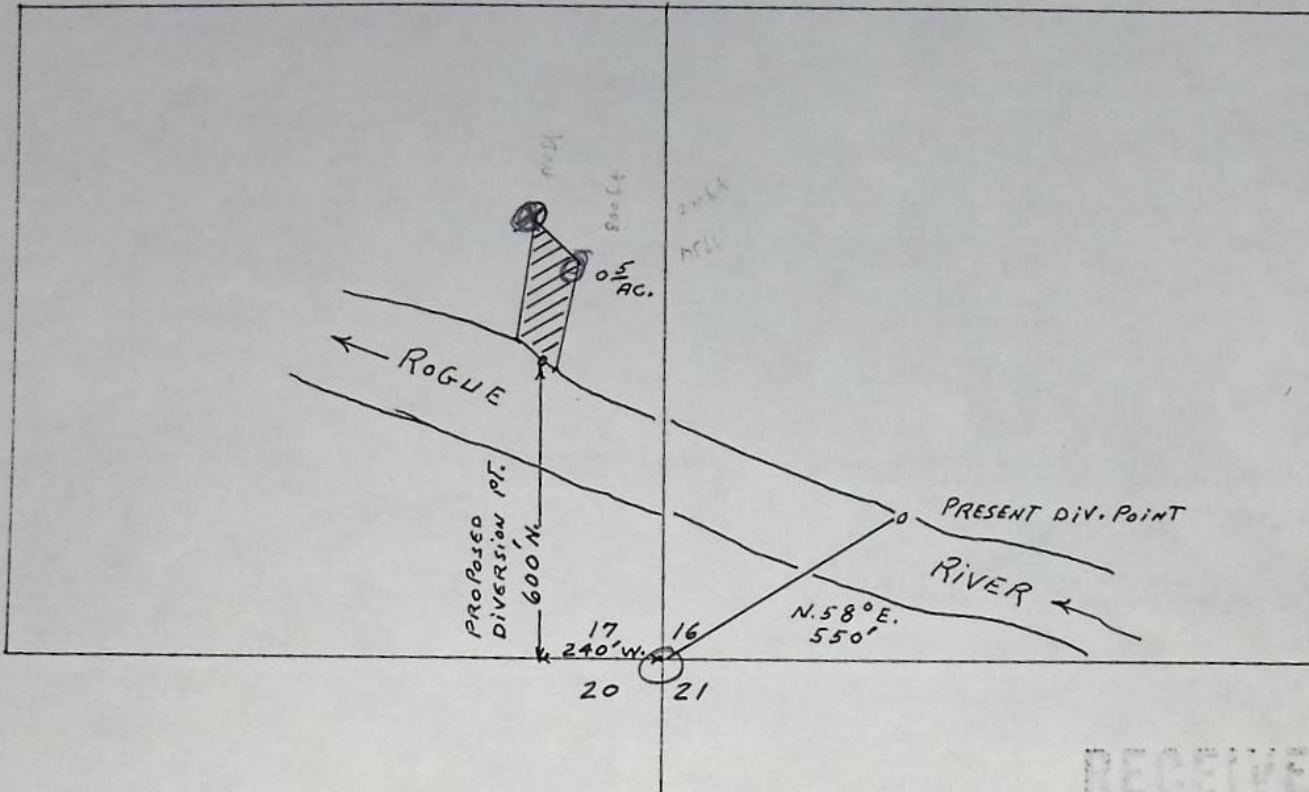


T.36S. R.3W. W. M.



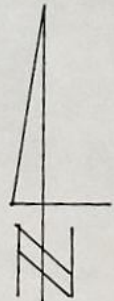
MAP TO ACCOMPANY APPLICATION OF  
C.G. AND LEORA M. VAN BLARICOM  
FOR CHANGE IN POINT OF DIVERSION

cert. 48414

RECEIVED

JUN 3 1975  
STATE ENGINEER  
SALEM, OREGON

SCALE 1" = 400'



6-3-75

T-3259