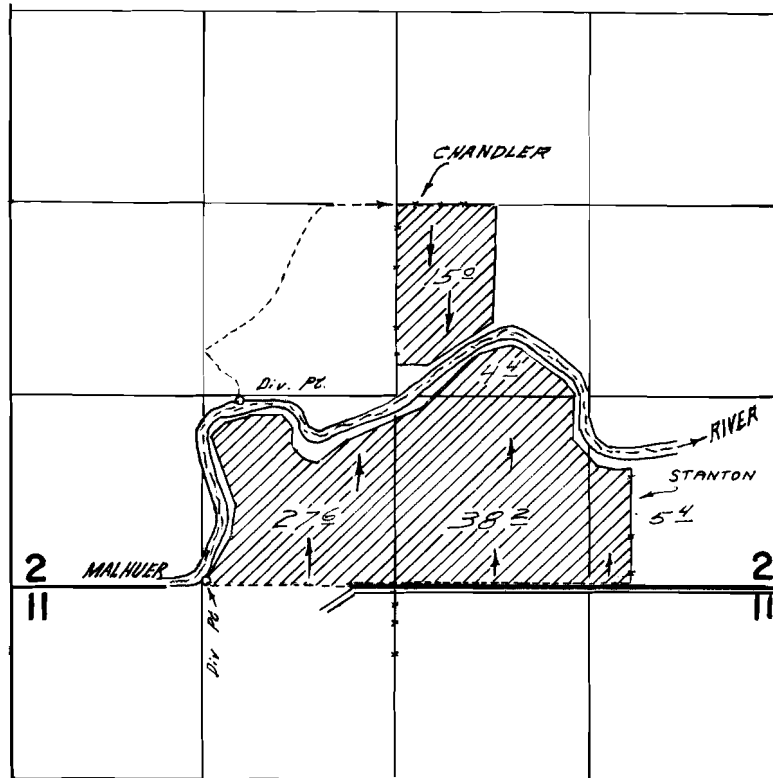


T. 18 S. R. 46 E. W. M.



North diversion point located 1350 ft. S & 1070 ft. W. from NW Corner of SE 1/4 Section 2.

South diversion point located 20 ft. N & 1280 ft. W. from S. 1/4 Corner Section 2.

FINAL PROOF SURVEY UNDER

Application No. 40772 Permit No. 30387
IN NAME OF

STANLEY C. CHANDLER, EDWARD P. & JANET A. STANTON

Surveyed Oct. 25, 1967, by W. J. Ruppert
Nov. 2